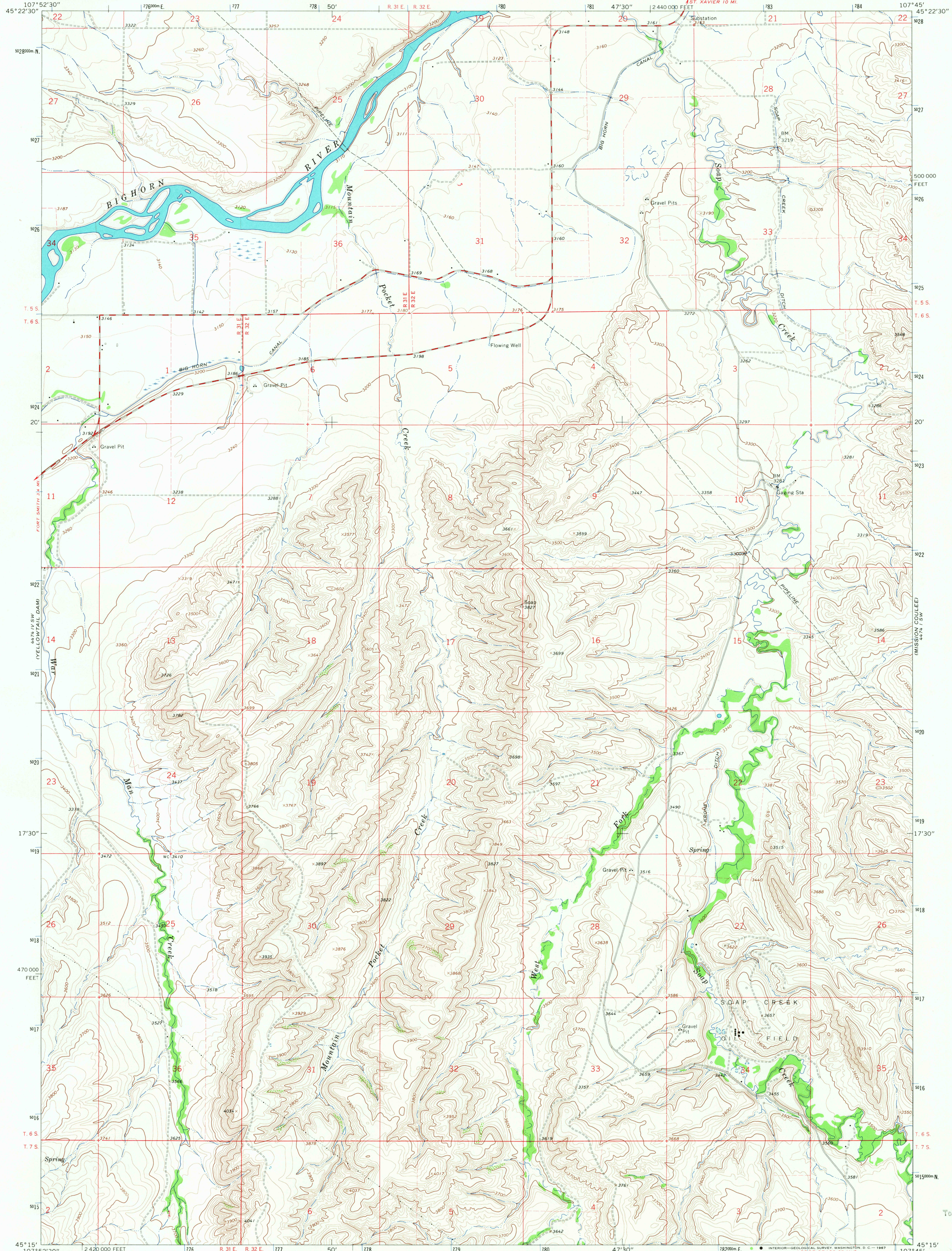
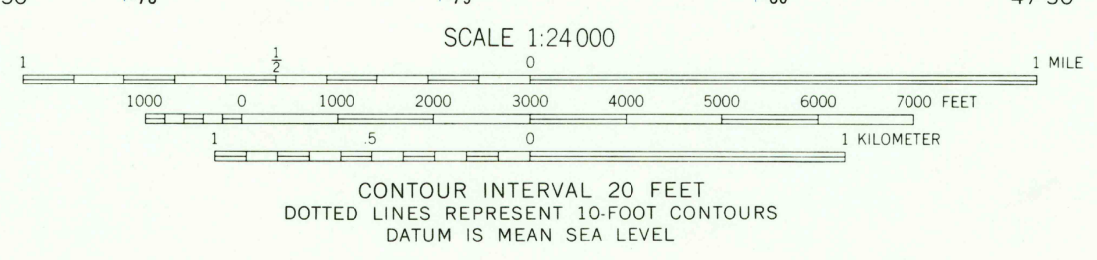
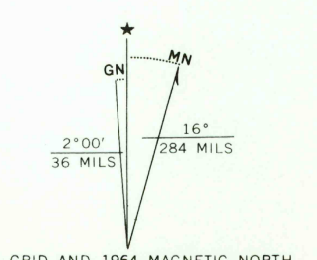


AMS 4474 IV SE
ST. XAVIER 10 MI.



Mapped, edited, and published by the Geological Survey as part of the Department of the Interior program for the development of the Missouri River Basin. Control by USGS and USC&GS. Topography by photogrammetric methods from aerial photographs taken 1963. Field checked 1964. Polyconic projection. 1927 North American datum. 10,000-foot grid based on Montana coordinate system, south zone 13, shown in blue. Fine red dashed lines indicate selected fence lines. Entire area lies within the boundary of the Crow Indian Reservation.



ROAD CLASSIFICATION
Medium-duty ——— Light-duty ———
Unimproved dirt - - - - -

THIS MAP COMPLIES WITH NATIONAL MAP ACCURACY STANDARDS
FOR SALE BY U.S. GEOLOGICAL SURVEY, DENVER, COLORADO 80225, OR WASHINGTON, D.C. 20242
A FOLDER DESCRIBING TOPOGRAPHIC MAPS AND SYMBOLS IS AVAILABLE ON REQUEST

MOUNTAIN POCKET CREEK, MONT.
N4515—W10745/7.5

1964

AMS 4474 IV SE—SERIES V894

USGS
Historical File
Topographic Division

U.S.G.S.
TOPOGRAPHIC DIVISION

3720
AUG 1 1967