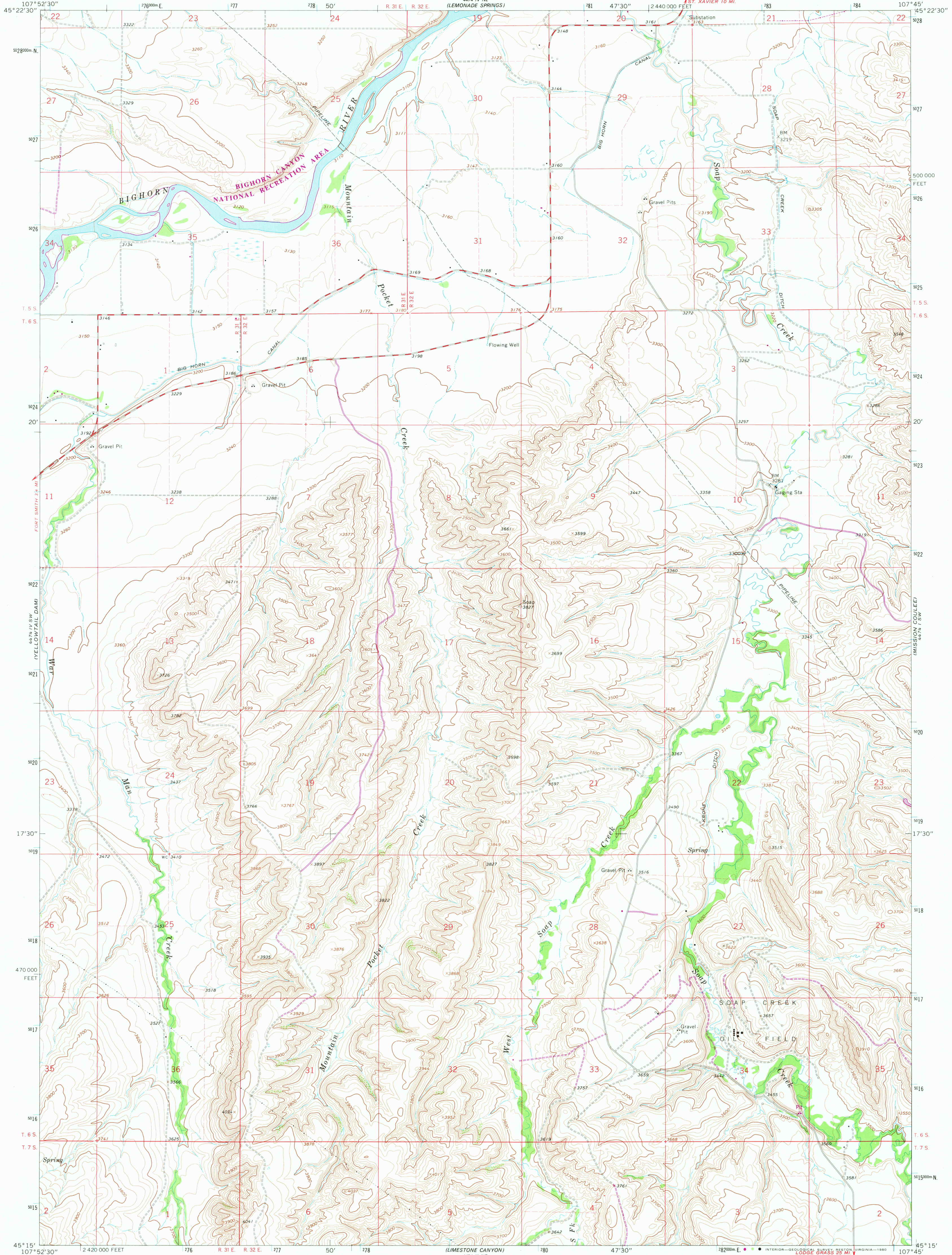


4474 IV NE
LEMONADE SPRINGS

UNITED STATES
DEPARTMENT OF THE INTERIOR
GEOLOGICAL SURVEY

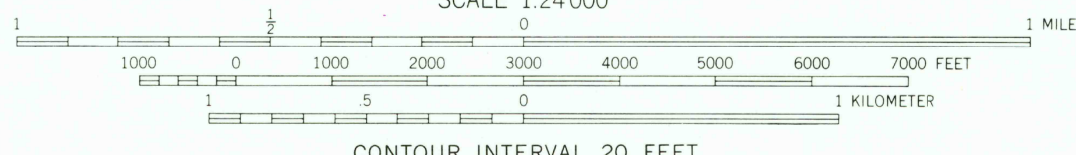
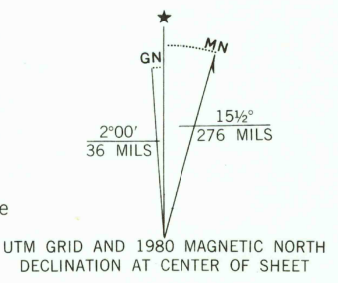
MOUNTAIN POCKET CREEK QUADRANGLE
MONTANA—BIG HORN CO.

4474 IV SE
ST. XAVIER



Mapped, edited, and published by the Geological Survey as part of the Department of the Interior program for the development of the Missouri River Basin Control by USGS and USC&GS

Topography by photogrammetric methods from aerial photographs taken 1963. Field checked 1964
Polyconic projection. 1927 North American datum 10,000-foot grid based on Montana coordinate system, south zone 1000-meter Universal Transverse Mercator grid ticks, zone 13, shown in blue
To place on the predicted North American Datum 1983 move the projection lines 8 meters north and 51 meters east as shown by dashed corner ticks
Entire area lies within the Crow Indian Reservation
There may be private inholdings within the boundaries of the National or State reservations shown on this map



CONTOUR INTERVAL 20 FEET
DOTTED LINES REPRESENT 10-FOOT CONTOURS
NATIONAL GEODETIC VERTICAL DATUM OF 1929



ROAD CLASSIFICATION

Medium-duty	Light-duty
Unimproved dirt	-----

USGS
Historical File
Topographic Division

MOUNTAIN POCKET CREEK, MONT.
N4515—W10745/7.5

1964
PHOTOREVISED 1980
DMA 4474 IV SE—SERIES V894

THIS MAP COMPLIES WITH NATIONAL MAP ACCURACY STANDARDS
FOR SALE BY U. S. GEOLOGICAL SURVEY, DENVER, COLORADO 80225, OR RESTON, VIRGINIA 22092
A FOLDER DESCRIBING TOPOGRAPHIC MAPS AND SYMBOLS IS AVAILABLE ON REQUEST

Revisions shown in purple compiled from aerial photographs taken 1978. Map edited 1980
This information not field checked

NOV - 5 1980

2138