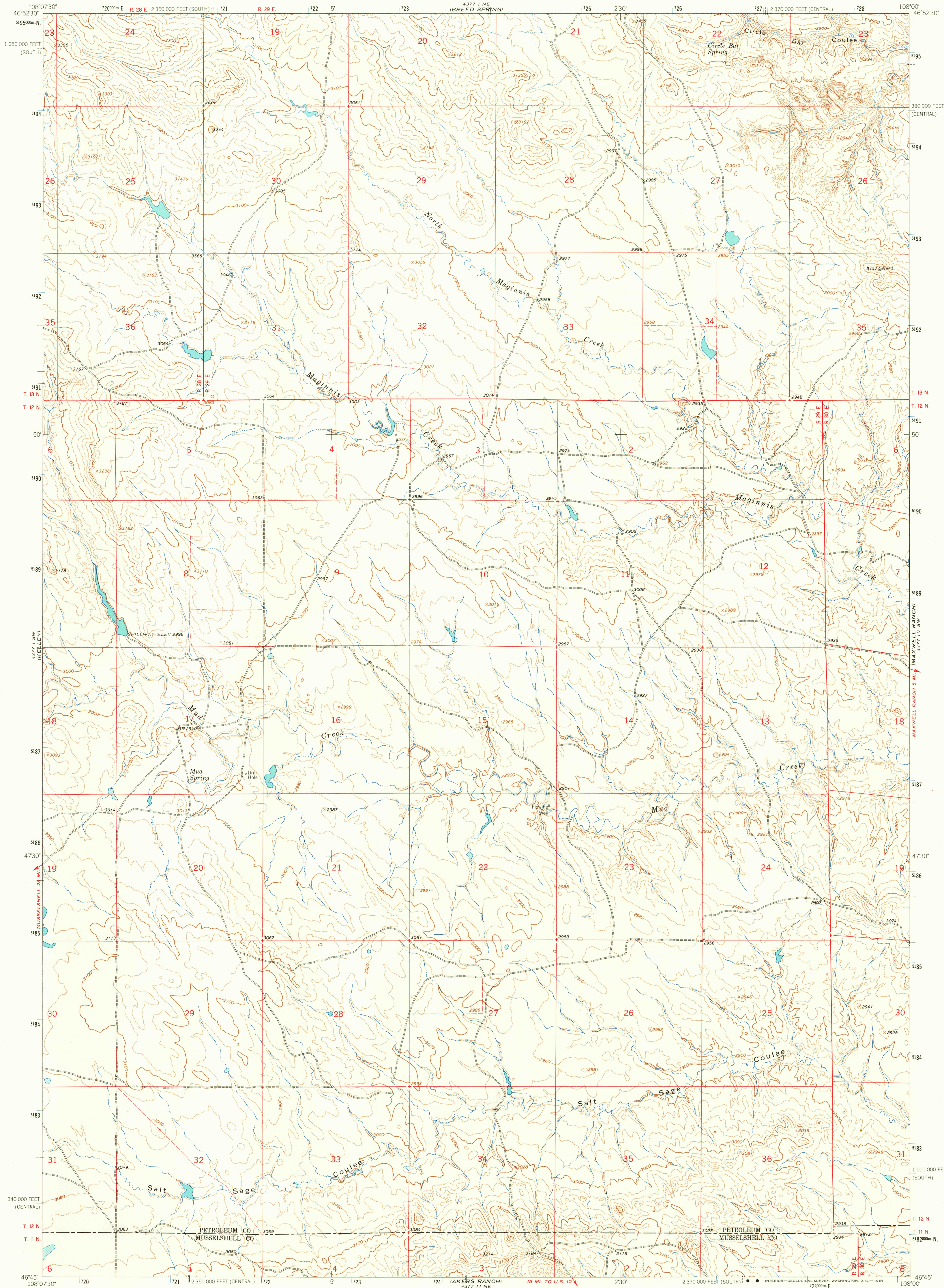


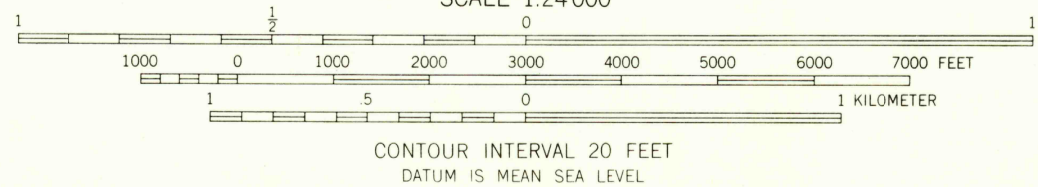
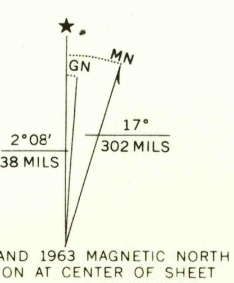
UNITED STATES
DEPARTMENT OF THE INTERIOR
GEOLOGICAL SURVEY

MUD SPRING QUADRANGLE
MONTANA
7.5 MINUTE SERIES (TOPOGRAPHIC)



Mapped, edited, and published by the Geological Survey

Control by USGS and USC&GS
Topography by photogrammetric methods from aerial photographs taken 1962. Field checked 1963
Polyconic projection. 1927 North American datum
10,000-foot grids based on Montana coordinate system, central and south zones
1000-meter Universal Transverse Mercator grid ticks, zone 12, shown in blue
Fine red dashed lines indicate selected fence lines



CONTOUR INTERVAL 20 FEET
DATUM IS MEAN SEA LEVEL



ROAD CLASSIFICATION
Unimproved dirt =-----

MUD SPRING, MONT.
N4645-W10800/7.5

1963

AMS 4377 1 SE - SERIES V894

THIS MAP COMPLIES WITH NATIONAL MAP ACCURACY STANDARDS
FOR SALE BY U.S. GEOLOGICAL SURVEY, DENVER, COLORADO 80225, OR WASHINGTON, D.C. 20242
A FOLDER DESCRIBING TOPOGRAPHIC MAPS AND SYMBOLS IS AVAILABLE ON REQUEST

USGS
Historical File
Topographic Division

U.S.G.S.
FILE COPY
TOPOGRAPHIC DIVISION

2420
AUG 9 1966