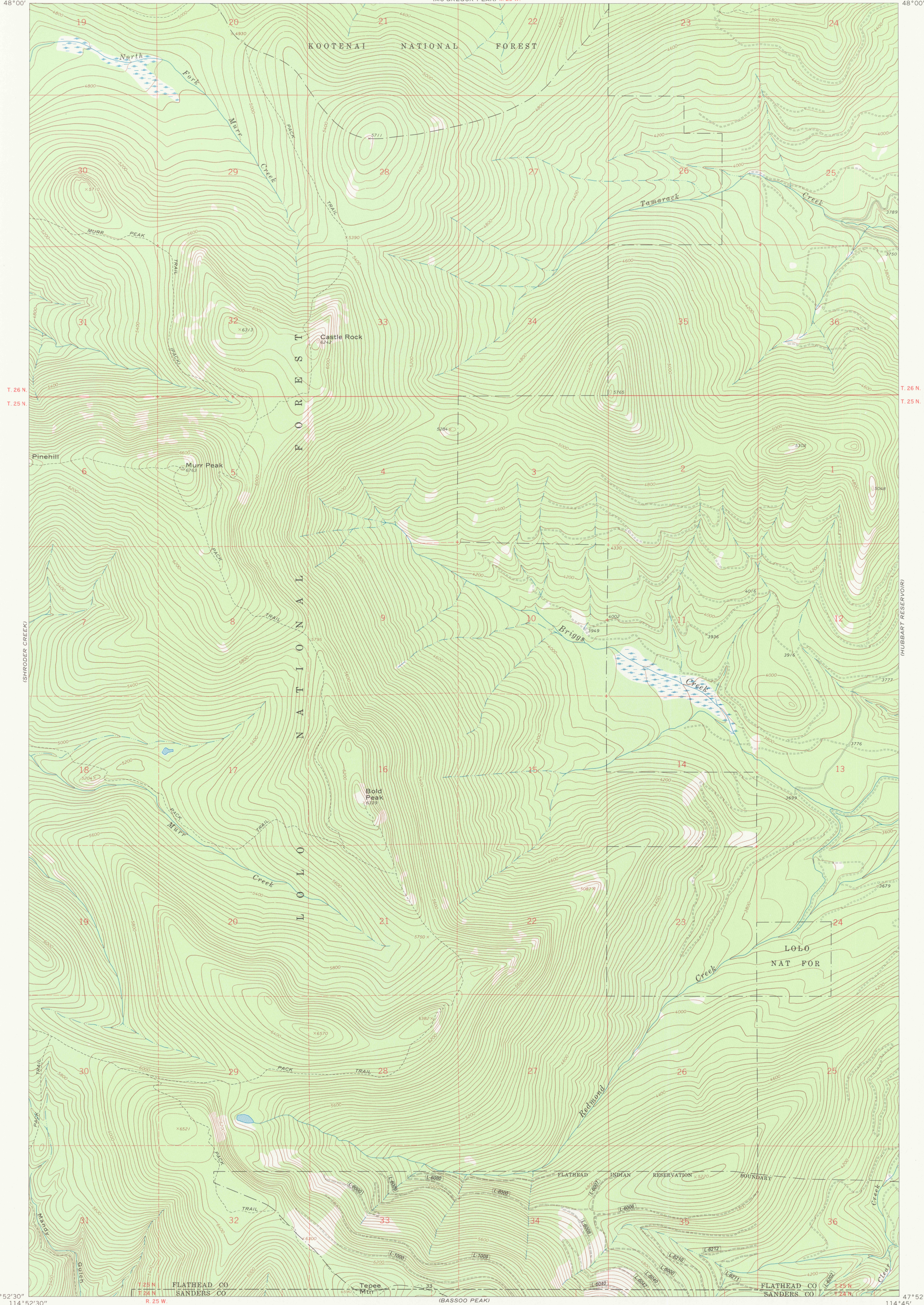


114°52'30"  
 48°00'

(MC GREGOR PEAK) R. 25 W

114°45'  
 48°00'



47°52'30"  
 114°52'30"

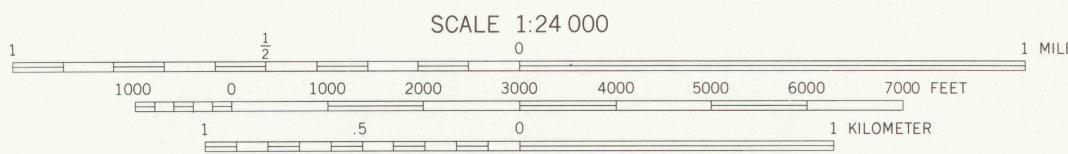
T. 25 N  
 T. 26 N  
 R. 25 W

(BASSOO PEAK)

T. 25 N  
 T. 26 N  
 R. 24 W

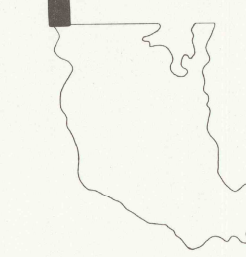
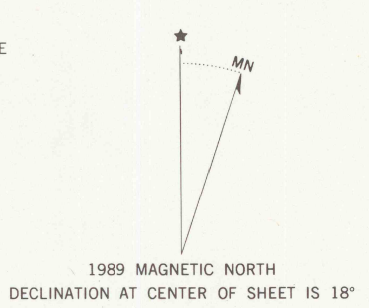
47°52'30"  
 114°45'

ROADS		BOUNDARIES	
—	Paved road	—	County
- - -	Surfaced light duty or improved dirt road	- - -	Reservation
- · - · -	Unimproved dirt road	- · - · -	Tribal Wilderness
- · - · -	Four wheel drive trail	- · - · -	Tribal Primitive Area
- · - · -	Route designation shield	- · - · -	Power transmission line
- · - · -		- · - · -	CFR Plot location
RAILROADS		Aerial photo centers 1980 & 1981 flight	
- · - · -	Single track	⊕	Indicated corner
- · - · -		⊕	Found corner
LAND LINES			
- · - · -	Surveyed		
- · - · -	Proprietary		
- · - · -	Fence lines		



SCALE 1:24 000  
 CONTOUR INTERVAL 40 FEET  
 DATUM IS MEAN SEA LEVEL  
 NATIONAL GEODETIC VERTICAL DATUM OF 1929  
 CONTROL BY USGS AND NOS/NOAA

Prepared by the Geological Survey for  
 the Bureau of Indian Affairs, Flathead Agency  
 Compiled in 1989 from USGS 1:24,000-scale quadrangle dated 1964  
 Revised from aerial photographs taken 1979 and other source data provided by BIA



RETURN TO:  
 USGS NMD HISTORICAL MAP ARCHIVES

MURR PEAK, MONT.  
 FLATHEAD INDIAN RESERVATION