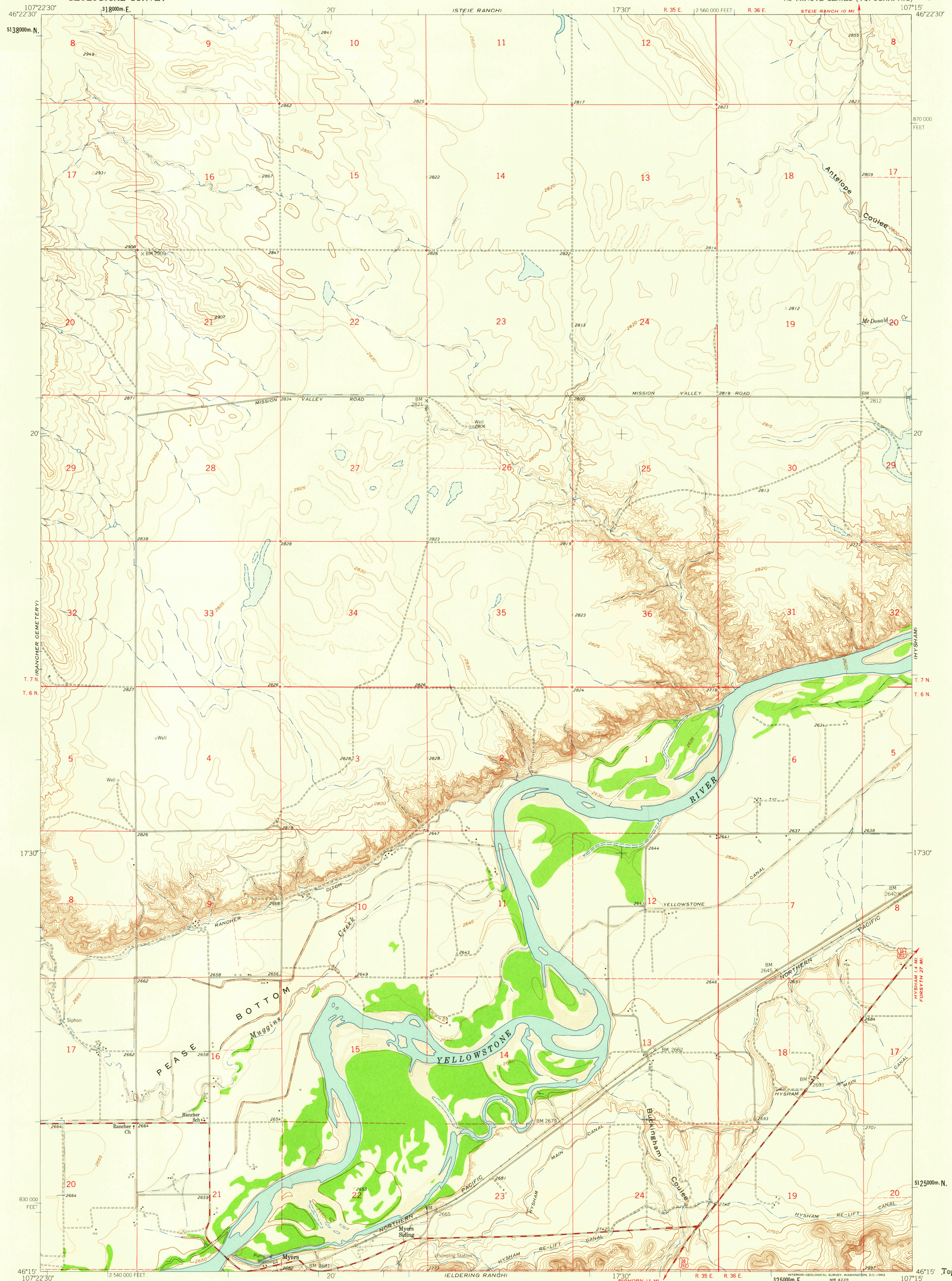
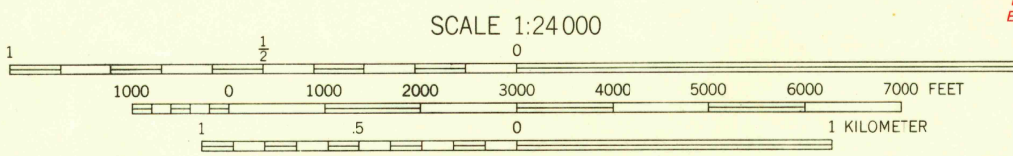
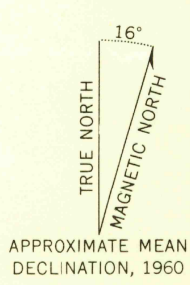


UNITED STATES  
DEPARTMENT OF THE INTERIOR  
GEOLOGICAL SURVEY

MYERS QUADRANGLE  
MONTANA - TREASURE CO.  
7.5 MINUTE SERIES (TOPOGRAPHIC)



Mapped, edited, and published by the Geological Survey as part of the Department of the Interior program for the development of the Missouri River Basin Control by USGS and USC&GS  
Topography by photogrammetric methods from aerial photographs taken 1956. Field checked 1960  
Polyconic projection. 1927 North American datum 10,000-foot grid based on Montana coordinate system, south zone  
1000-meter Universal Transverse Mercator grid ticks, zone 13, shown in blue  
Fine red dashed lines indicate selected fence and field lines where generally visible on aerial photographs This information is unchecked



SCALE 1:24 000  
CONTOUR INTERVAL 10 FEET  
DOTTED LINES REPRESENT 5-FOOT CONTOURS  
DATUM IS MEAN SEA LEVEL



ROAD CLASSIFICATION  
Medium-duty ——— Light-duty ———  
Unimproved dirt - - - - - U.S. Route

FOR SALE BY U.S. GEOLOGICAL SURVEY, DENVER 25, COLORADO OR WASHINGTON 25, D.C.  
A FOLDER DESCRIBING TOPOGRAPHIC MAPS AND SYMBOLS IS AVAILABLE ON REQUEST

MYERS, MONT.  
N4615-W10715/7.5  
1960

U.S.G.S. FILE COPY  
TOPOGRAPHIC DIVISION  
SEP 25 1962