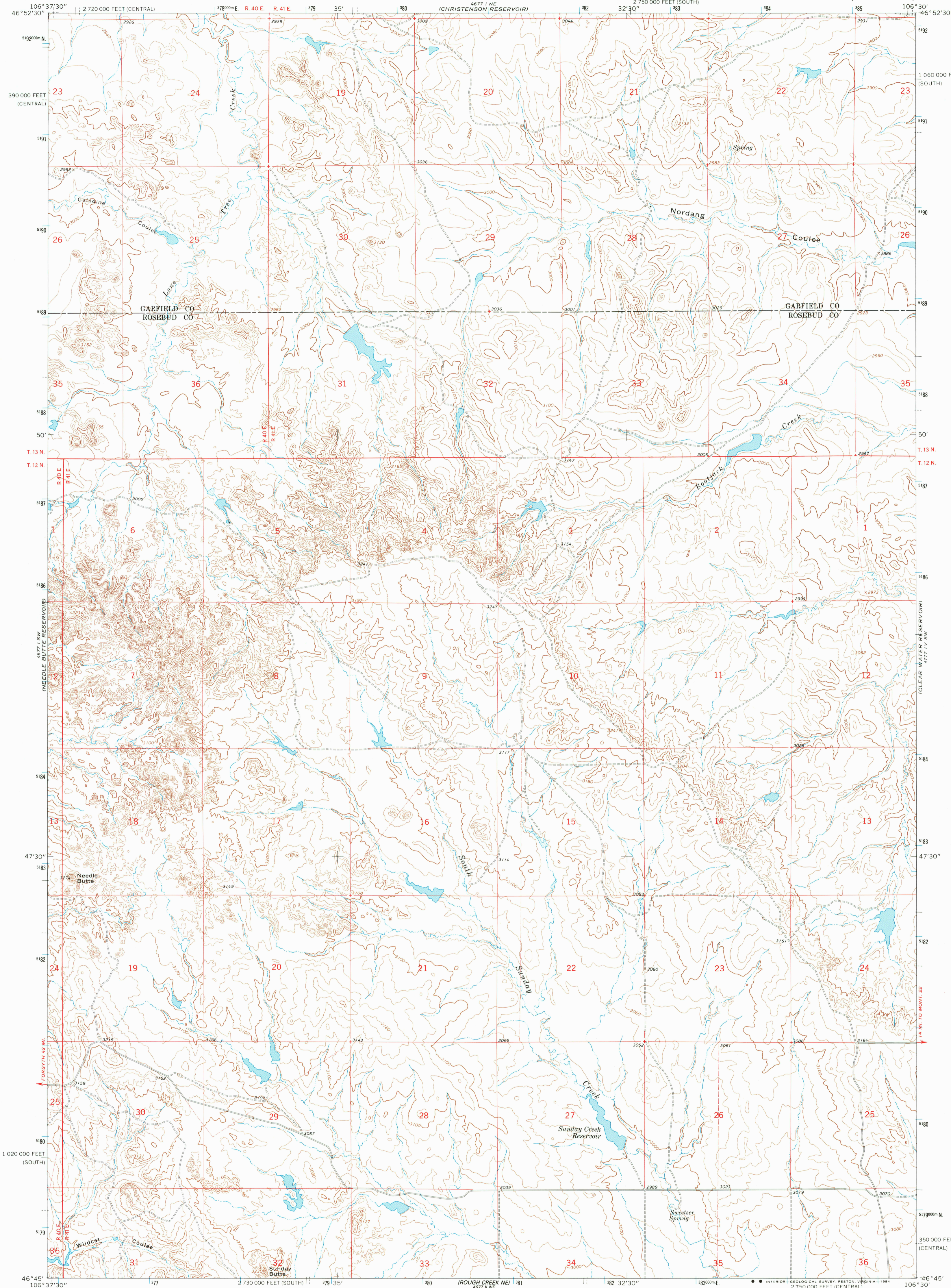
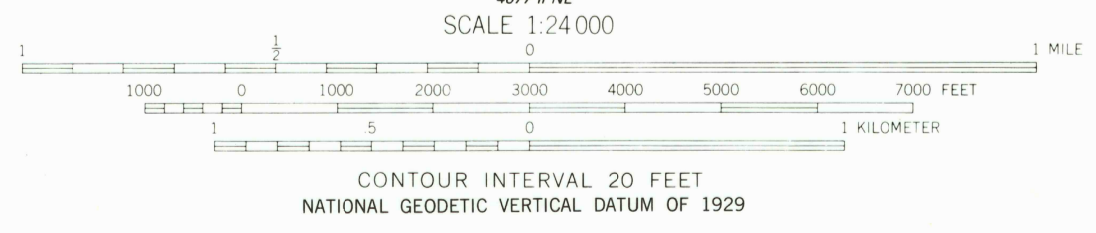
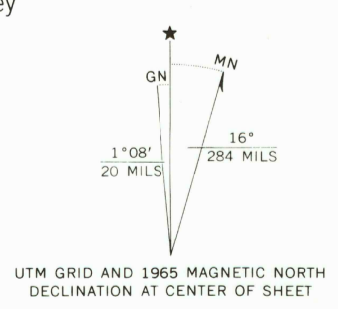


UNITED STATES
DEPARTMENT OF THE INTERIOR
GEOLOGICAL SURVEY

NEEDLE BUTTE QUADRANGLE
MONTANA
7.5 MINUTE SERIES (TOPOGRAPHIC)



Mapped, edited, and published by the Geological Survey
Control by USGS and USC&GS
Topography by photogrammetric methods from aerial photographs taken 1964. Field checked 1965
Polyconic projection, 1927 North American Datum
10,000-foot grids based on Montana coordinate system, south and central zones
1000-meter Universal Transverse Mercator grid ticks, zone 13, shown in blue
Fine red dashed lines indicate selected fence lines
To place on the predicted North American Datum 1983 move the projection lines 6 meters north and 48 meters east as shown by dashed corner ticks
Map photoinspected 1976
No major culture or drainage changes observed



ROAD CLASSIFICATION
Light-duty ——— Unimproved dirt - - - - -

NEEDLE BUTTE, MONT.
46106-G5-TF-024

1965
PHOTOINSPECTED 1976
DMA 4677 1 SE-SERIES V894

NEEDLE BUTTE
ISSN # 0607310073 MT 024
TF
9780607310078

RETURN TO:
USGS AND HISTORICAL MAP ARCHIVES