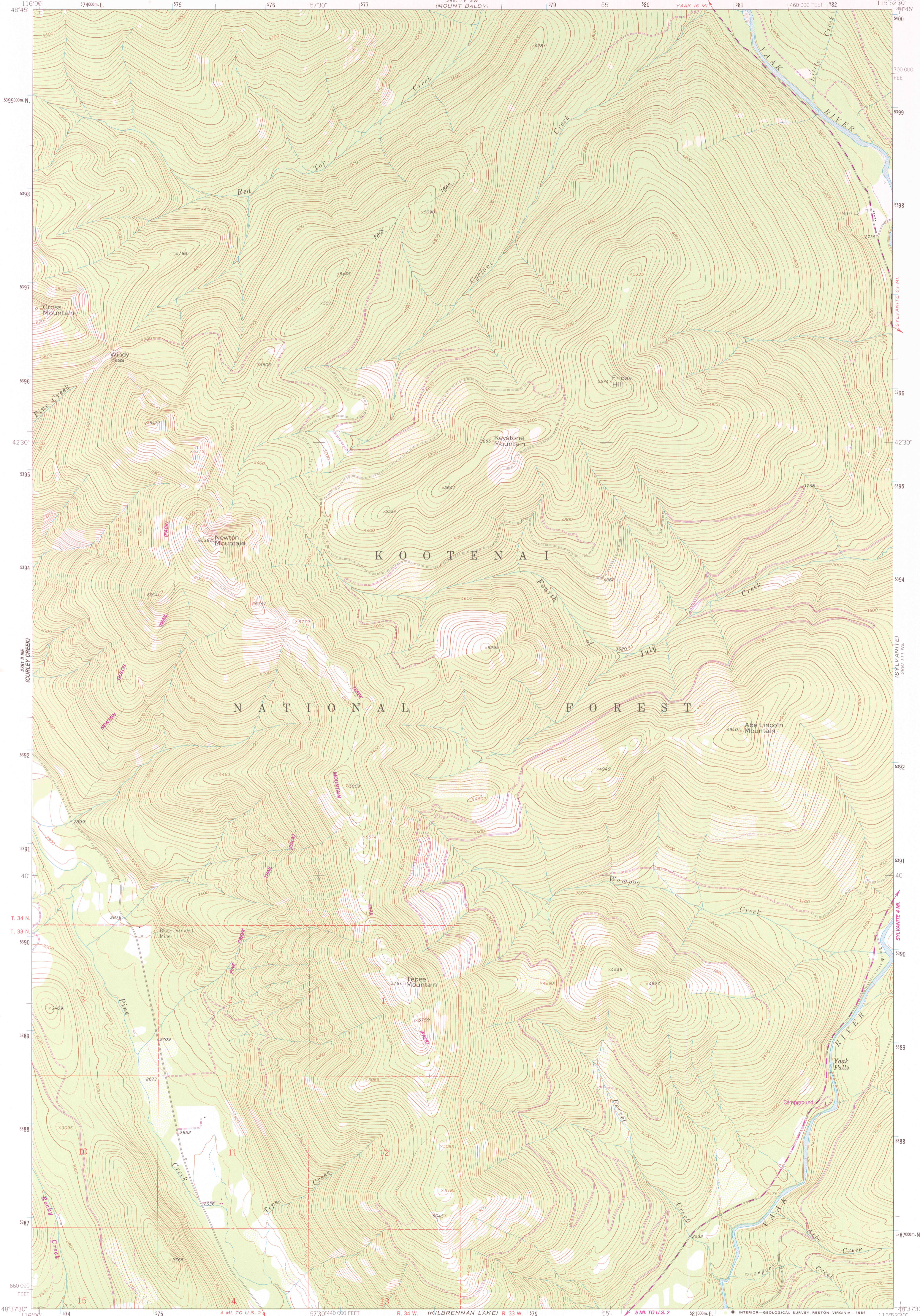


2781 1/2 SE  
LINE POINT

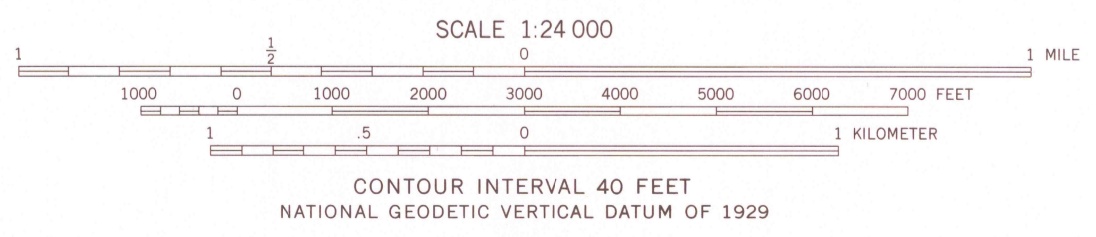
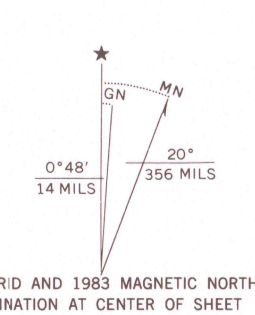
UNITED STATES  
DEPARTMENT OF THE INTERIOR  
GEOLOGICAL SURVEY

NEWTON MOUNTAIN QUADRANGLE  
MONTANA-LINCOLN CO.  
7.5 MINUTE SERIES (TOPOGRAPHIC)

2881 1/2 SE  
COLLARD MOUNTAIN



Mapped, edited, and published by the Geological Survey  
Control by USGS and NOS/NOAA  
Topography by photogrammetric methods from aerial photographs taken 1962. Field checked 1963.  
Polyconic projection. 1927 North American Datum  
10,000-foot grid based on Montana coordinate system, north zone  
1000-meter Universal Transverse Mercator grid ticks, zone 11, shown in blue  
Where omitted, land lines have not been established  
There may be private inholdings within the boundaries of the National or State reservations shown on this map  
To place on the predicted North American Datum 1983 move the projection lines 12 meters north and 75 meters east as shown by dashed corner ticks



ROAD CLASSIFICATION  
Light-duty ————— Unimproved dirt - - - - -  
Secondary highway, hard surface ————

NEWTON MOUNTAIN, MONT.  
48115-F8-TF-024

THIS MAP COMPLIES WITH NATIONAL MAP ACCURACY STANDARDS  
FOR SALE BY U. S. GEOLOGICAL SURVEY, DENVER, COLORADO 80225, OR RESTON, VIRGINIA 22092  
A FOLDER DESCRIBING TOPOGRAPHIC MAPS AND SYMBOLS IS AVAILABLE ON REQUEST

Revisions shown in purple and woodland compiled from aerial photographs taken 1982 and other source data. Partial field check by U.S. Forest Service. Map edited 1983

1963  
PHOTOREVISED 1983  
DMA 2881 1/2 NW-SERIES V894

