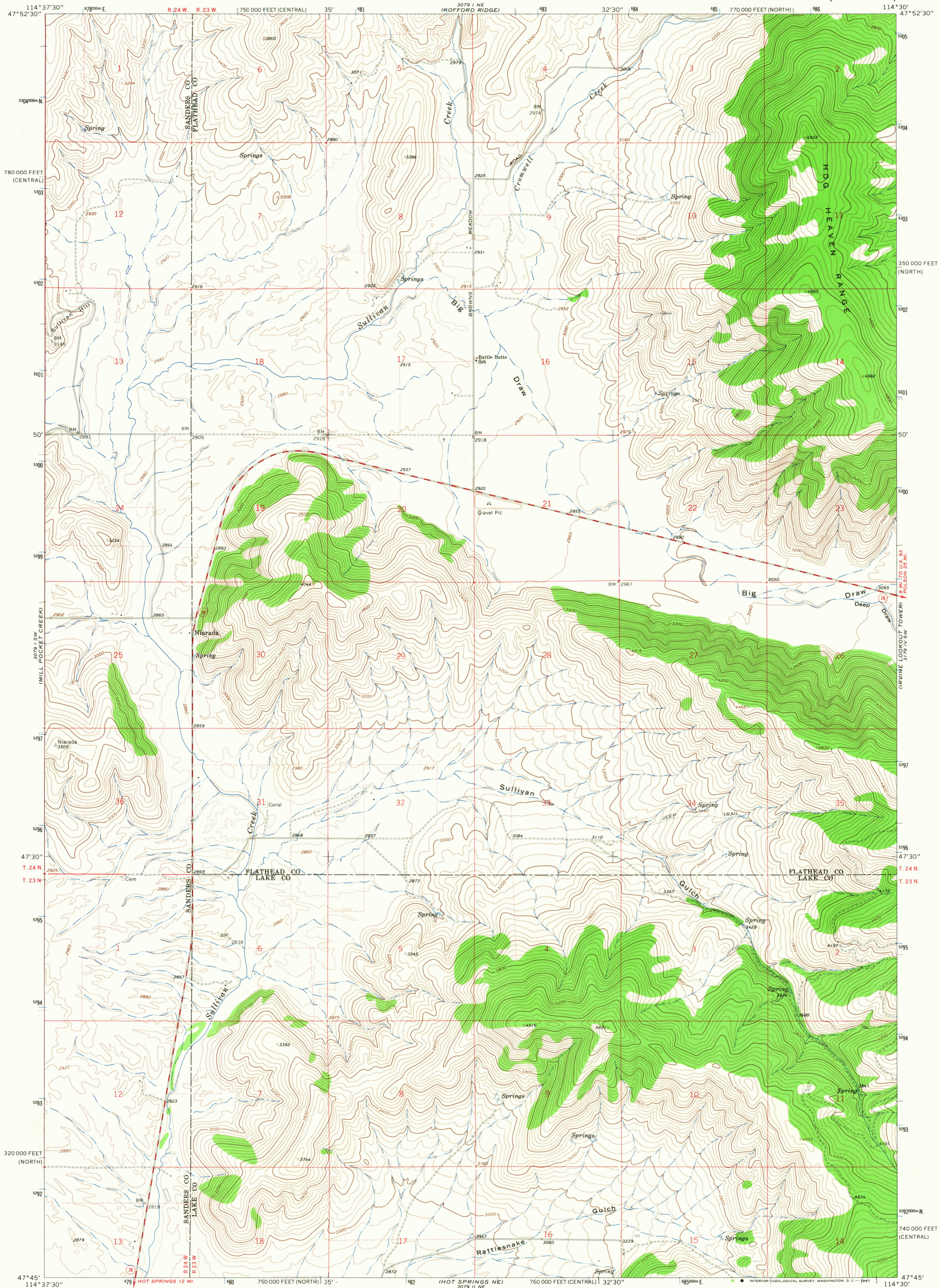
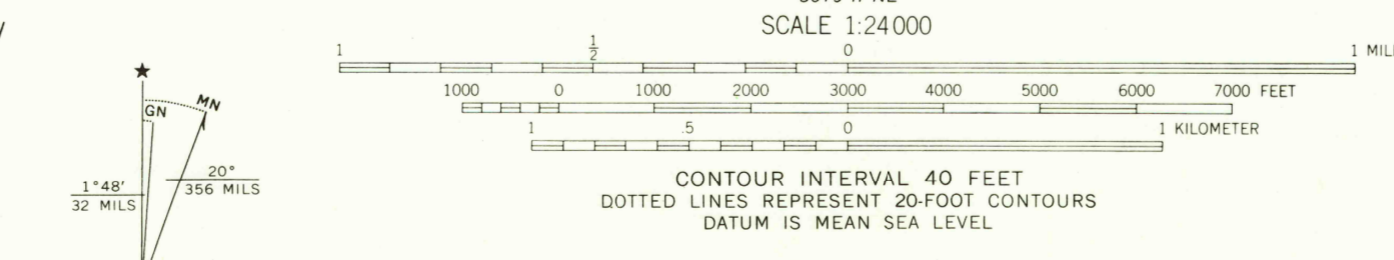


UNITED STATES
DEPARTMENT OF THE INTERIOR
GEOLOGICAL SURVEY

NIARADA QUADRANGLE
MONTANA
7.5 MINUTE SERIES (TOPOGRAPHIC)



Mapped, edited, and published by the Geological Survey
Control by USGS and USC&GS
Topography by photogrammetric methods from aerial photographs taken 1963. Field checked 1964
Polyconic projection. 1927 North American datum
10,000-foot grids based on Montana coordinate system, north and central zones
1000-meter Universal Transverse Mercator grid ticks, zone 11, shown in blue
Fine red dashed lines indicate selected fence lines
Entire area lies within the boundary of the Flathead Indian Reservation



ROAD CLASSIFICATION

- Medium-duty
- Light-duty
- Unimproved dirt
- Slate Route

U.S.G.S. 1:50,000 SCALE TOPOGRAPHIC DIVISION

NIARADA, MONT.
N4745-W11430/7.5
1964

THIS MAP COMPLIES WITH NATIONAL MAP ACCURACY STANDARDS
FOR SALE BY U.S. GEOLOGICAL SURVEY, DENVER, COLORADO 80225, OR WASHINGTON, D.C. 20242
A FOLDER DESCRIBING TOPOGRAPHIC MAPS AND SYMBOLS IS AVAILABLE ON REQUEST

USGS
Historical File
Topographic Division

3165
SEP 1 1967