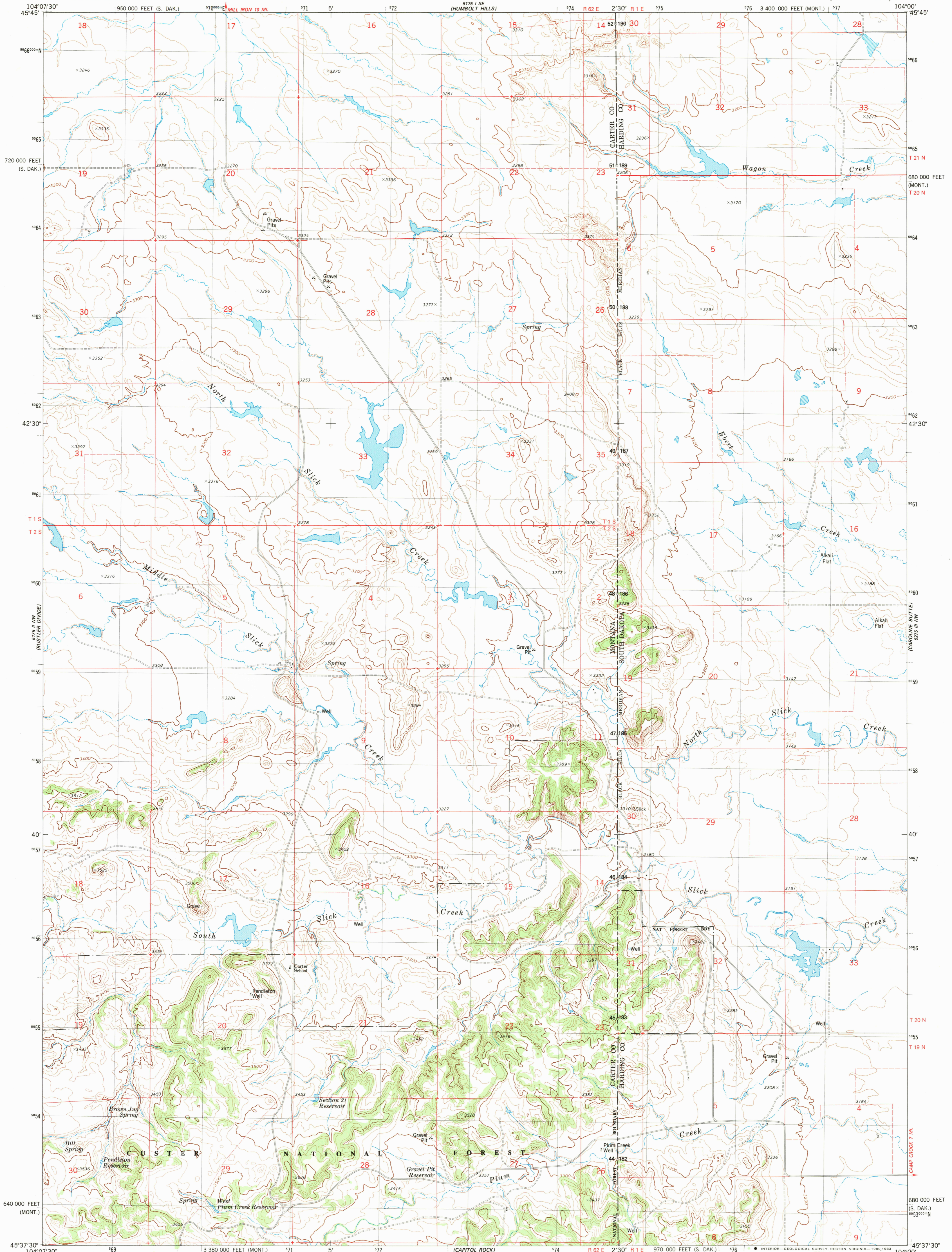


UNITED STATES
DEPARTMENT OF THE INTERIOR
GEOLOGICAL SURVEY

NORTH SLICK CREEK QUADRANGLE
MONTANA-SOUTH DAKOTA
7.5 MINUTE SERIES (TOPOGRAPHIC)



Mapped, edited, and published by the Geological Survey

Control by USGS, NOS/NOAA, and U.S. Forest Service

Topography by photogrammetric methods from aerial photographs taken 1972. Field checked 1974. Map edited 1980

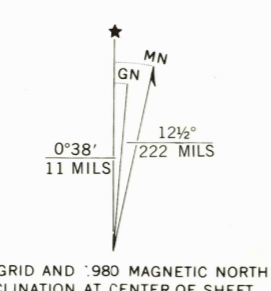
Projection: Montana coordinate system, south zone (Lambert conformal conic)

10,000-foot grid ticks based on Montana coordinate system, south zone and South Dakota coordinate system, north zone 1000-meter Universal Transverse Mercator grid, zone 13 1927 North American datum

To place on the predicted North American Datum 1983 move the projection lines 4 meters north and 39 meters east as shown by dashed corner ticks

Fine red dashed lines indicate selected fence lines

There may be private inholdings within: the boundaries of the National or State reservations shown on this map



SCALE 1:24 000

1000 0 1000 2000 3000 4000 5000 6000 7000 FEET
0 1 KILOMETER

CONTOUR INTERVAL 20 FEET
DOTTED LINES REPRESENT 10-FOOT CONTOURS
NATIONAL GEODETIC VERTICAL DATUM OF 1929

THIS MAP COMPLIES WITH NATIONAL MAP ACCURACY STANDARDS
FOR SALE BY U. S. GEOLOGICAL SURVEY, DENVER, COLORADO 80225, OR RESTON, VIRGINIA 22092
A FOLDER DESCRIBING TOPOGRAPHIC MAPS AND SYMBOLS IS AVAILABLE ON REQUEST

ROAD CLASSIFICATION

Primary highway, hard surface
Secondary highway, hard surface
Unimproved road
Light-duty road, hard or improved surface

Interstate Route U. S. Route State Route



NORTH SLICK CREEK, MONT. - S. DAK.
N4537.5-W10400/7.5

1980

DMA 5175 II NE-SERIES V894

RETURN TO:
USGS NMD HISTORICAL MAP ARCHIVES