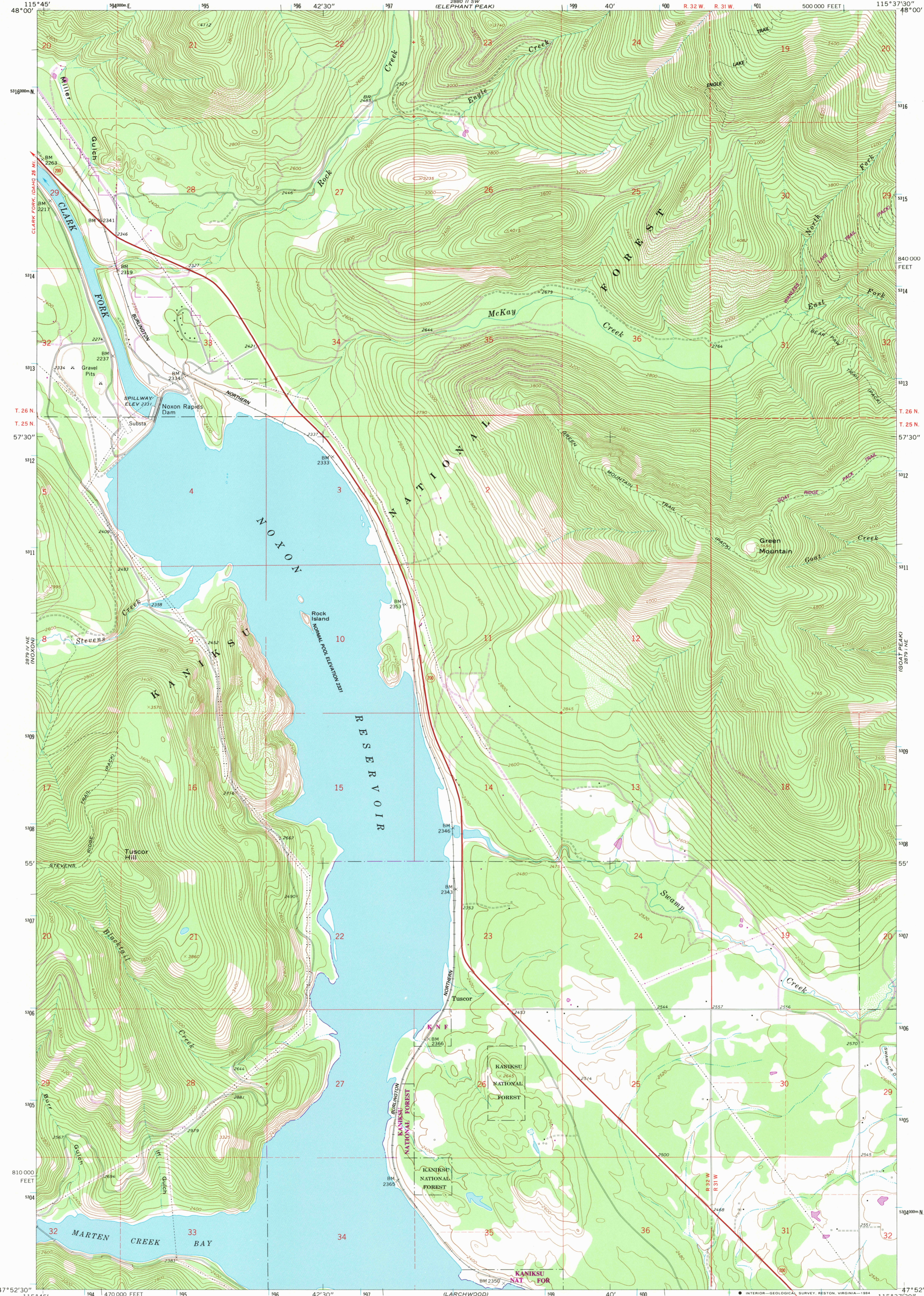
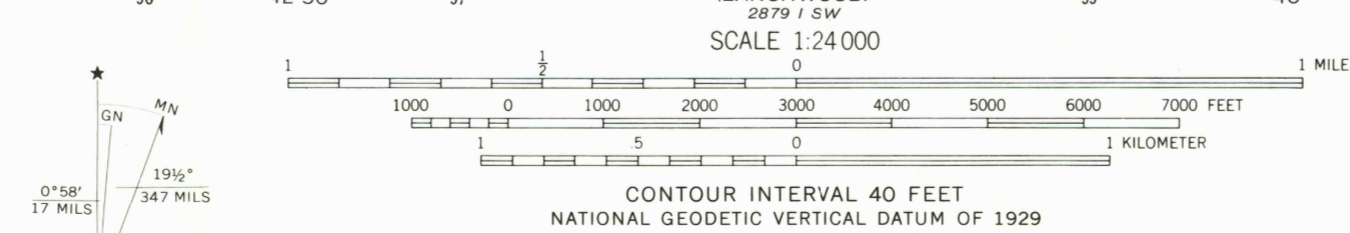


UNITED STATES  
DEPARTMENT OF THE INTERIOR  
GEOLOGICAL SURVEY

NOXON RAPIDS DAM QUADRANGLE  
MONTANA-SANDERS CO.  
7.5 MINUTE SERIES (TOPOGRAPHIC)

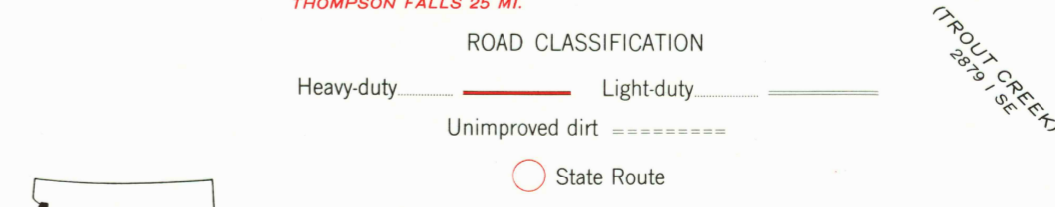


Mapped, edited, and published by the Geological Survey  
Control by USGS and NOS/NOAA  
Topography by photogrammetric methods from aerial photographs taken 1965. Field checked 1966  
Polyconic projection. 1927 North American Datum  
10,000-foot grid based on Montana coordinate system, central zone  
1000-meter Universal Transverse Mercator grid ticks, zone 11, shown in blue  
Fine red dashed lines indicate selected fence lines  
Where omitted, land lines have not been established  
To place on the predicted North American Datum 1983 move the projection lines 13 meters north and 75 meters east as shown by dashed corner ticks



UTM GRID and 1983 MAGNETIC NORTH DECLINATION AT CENTER OF SHEET  
0°58' 17" MILS  
1915° 347" MILS

THIS MAP COMPLIES WITH NATIONAL MAP ACCURACY STANDARDS  
FOR SALE BY U. S. GEOLOGICAL SURVEY, DENVER, COLORADO 80225, OR RESTON, VIRGINIA 22092  
A FOLDER DESCRIBING TOPOGRAPHIC MAPS AND SYMBOLS IS AVAILABLE ON REQUEST



NOXON RAPIDS DAM, MONT.  
47115-H6-TF-024  
1966  
PHOTOREVISED 1983  
DMA 2879 I NW—SERIES V894

RETURN TO:  
USGS AND HISTORICAL MAP ARCHIVES

NOXON RAPIDS DAM  
ISBN # 0607310464 MT 004  
TF  
9 780607 310464