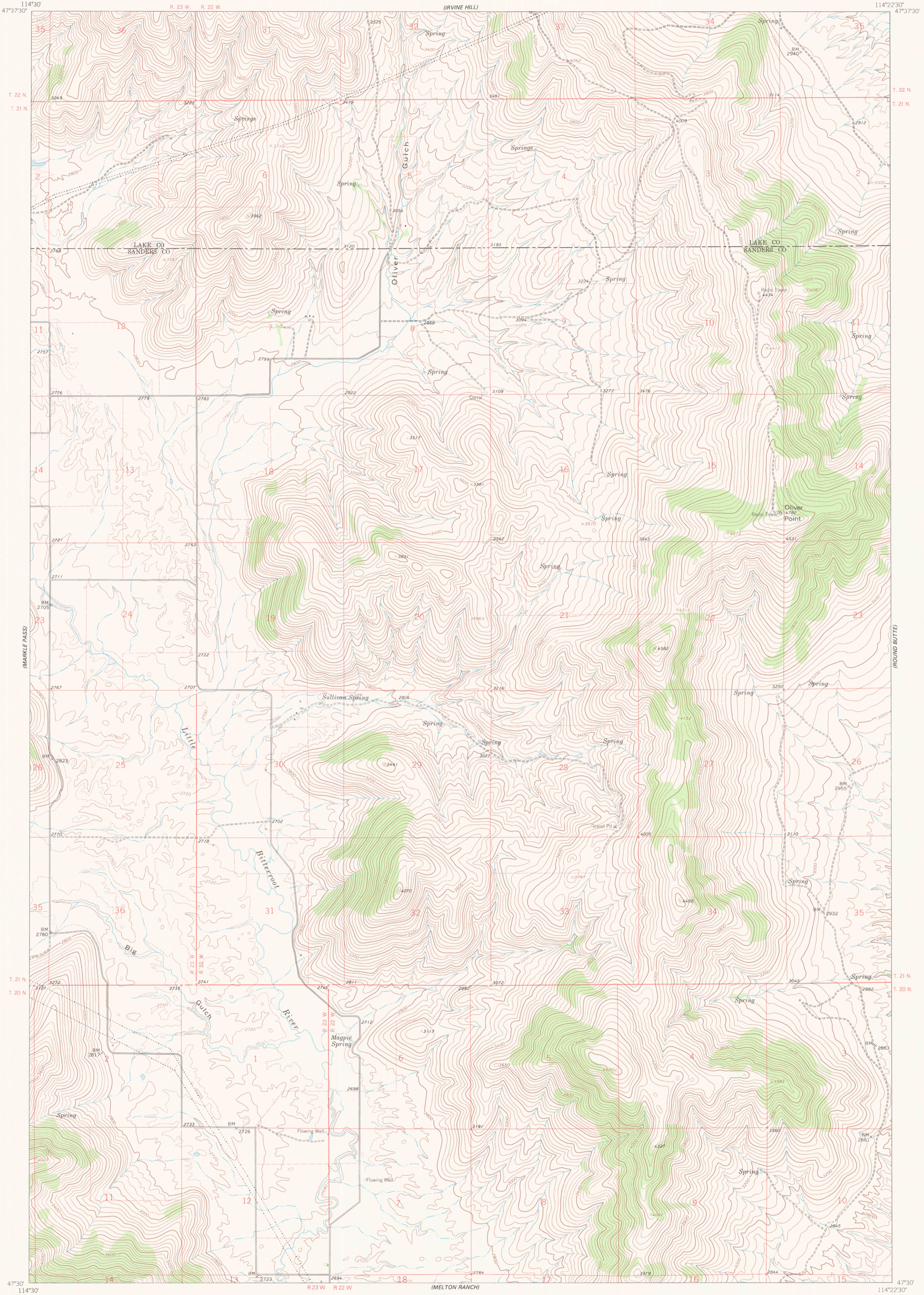


OLIVER POINT QUADRANGLE
FLATHEAD INDIAN RESERVATION
7.5 MINUTE SERIES (TOPOGRAPHIC)

UNITED STATES
DEPARTMENT OF THE INTERIOR
BUREAU OF INDIAN AFFAIRS

(MOT SPRINGS NE)

(BUFFALO BRIDGE)

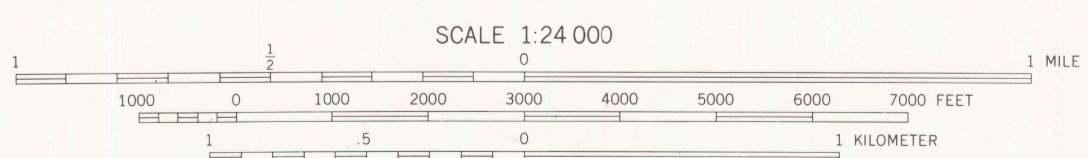


(CAMAS PRAIRIE)

(SLOAN)

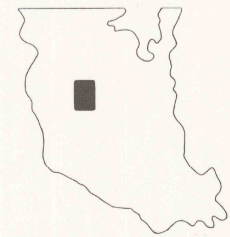
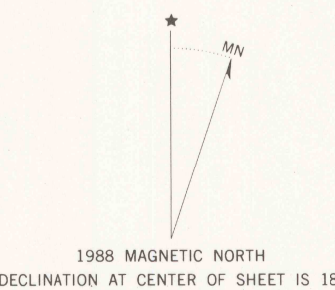
LEGEND

	ROADS		BOUNDARIES
	RAILROADS		
	LAND LINES		



CONTOUR INTERVAL 40 FEET
DOTTED LINES REPRESENT 20-FOOT CONTOURS
DATUM IS MEAN SEA LEVEL
NATIONAL GEODETIC VERTICAL DATUM OF 1929
CONTROL BY USGS AND NOS/NOAA

Prepared by the Geological Survey for
the Bureau of Indian Affairs, Flathead Agency
Compiled in 1988 from USGS 1:24,000-scale quadrangle dated 1965
Revised from aerial photographs taken 1977 and other source data provided by BIA



RETURN TO:
USGS NHD HISTORICAL MAP ARCHIVES

OLIVER POINT, MONT.
FLATHEAD INDIAN RESERVATION