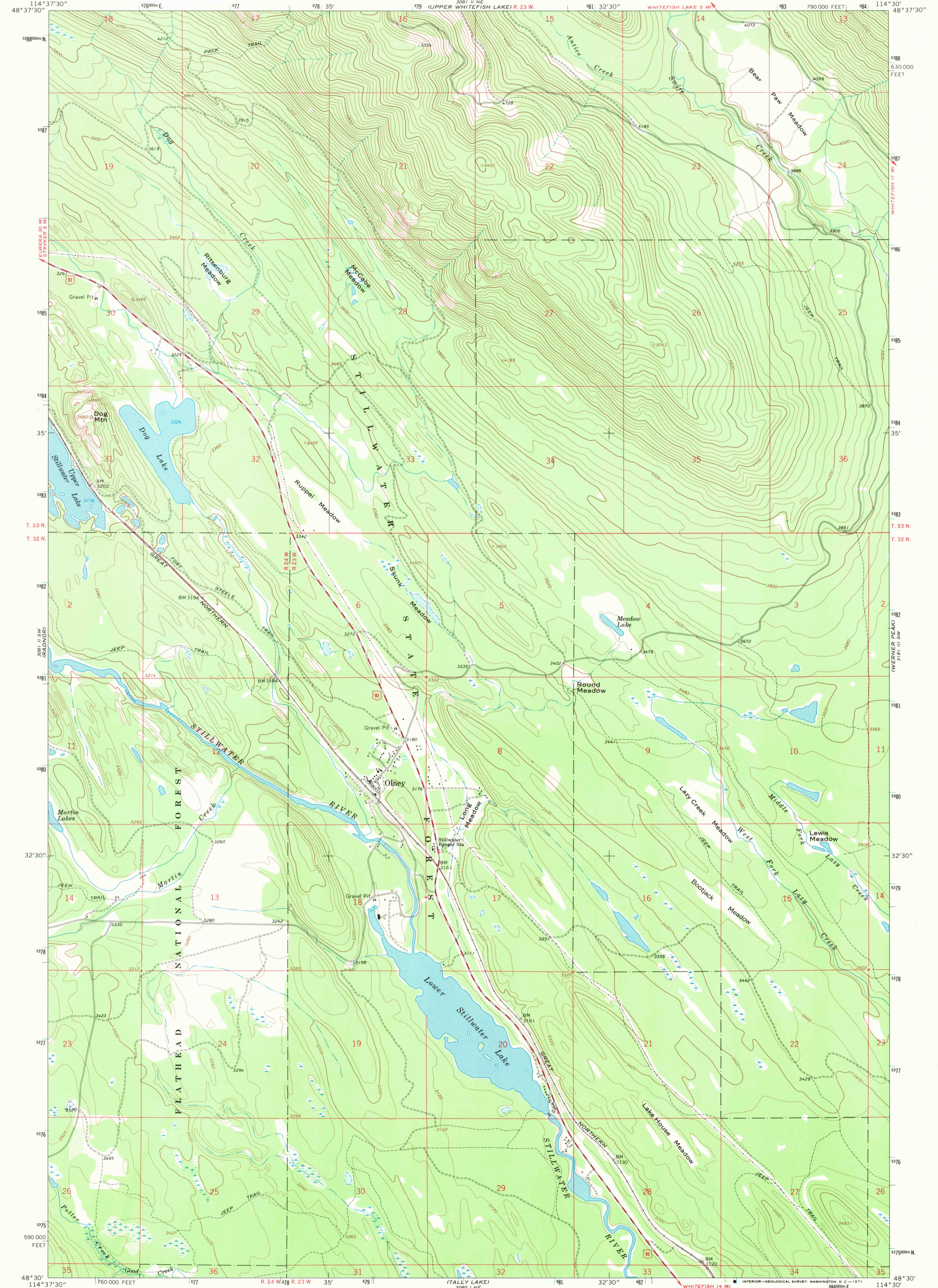
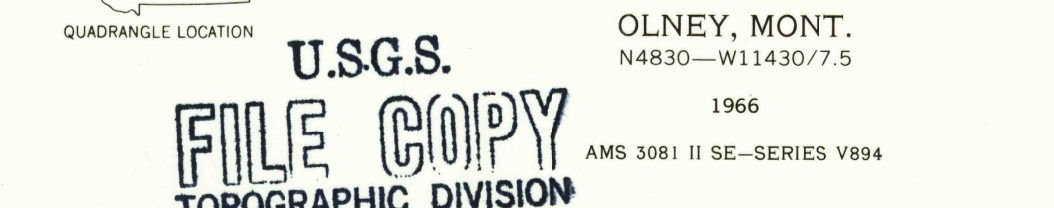
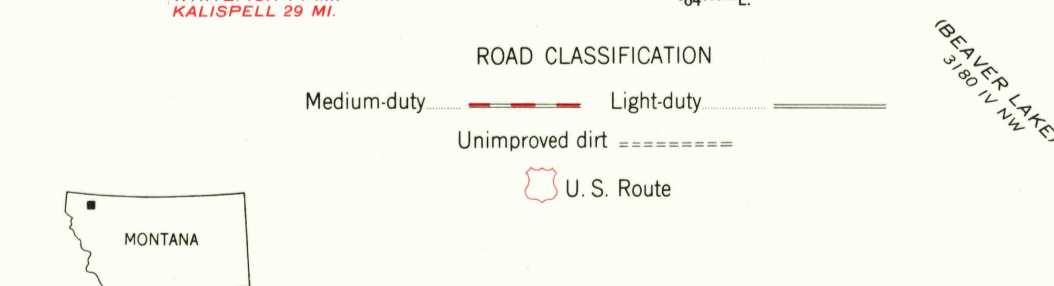
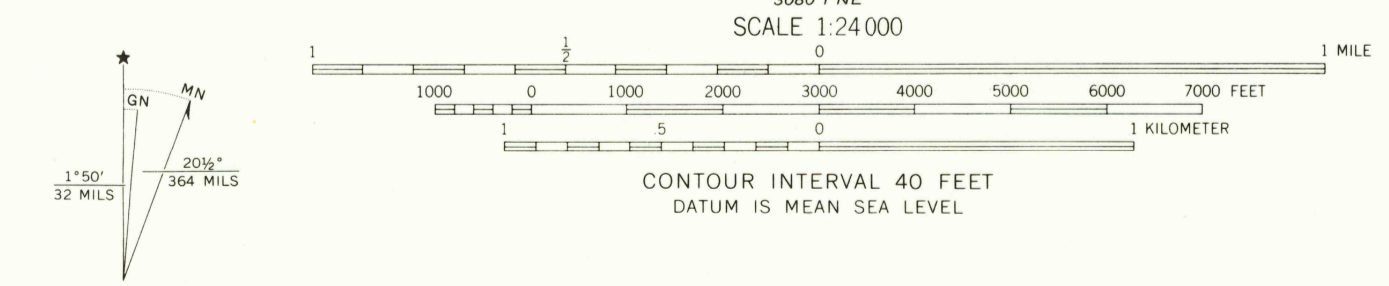


3081 II NW  
BULL LAKE

318 III SW  
MOOSE PEAK



Mapped, edited, and published by the Geological Survey  
Control by USGS and USC&GS  
Topography by photogrammetric methods from aerial  
photographs taken 1965. Field checked 1966.  
Polyconic projection. 1927 North American datum  
10,000-foot grid based on Montana coordinate system,  
north zone  
1000-meter Universal Transverse Mercator grid ticks,  
zone 11, shown in blue



USGS  
Historical File  
Topographic Division

2245  
FEB 8 1971

THIS MAP COMPLIES WITH NATIONAL MAP ACCURACY STANDARDS  
FOR SALE BY U.S. GEOLOGICAL SURVEY, DENVER, COLORADO 80225, OR WASHINGTON, D.C. 20242  
A FOLDER DESCRIBING TOPOGRAPHIC MAPS AND SYMBOLS IS AVAILABLE ON REQUEST

U.S.G.S.  
FILE COPY  
TOPOGRAPHIC DIVISION

OLNEY, MONT.  
N4830-W11430/7.5  
1966  
AMS 3081 II SE-SERIES V894

3080 I NW  
JOHNSON PEAK

3180 III NW  
BEAVER LAKE