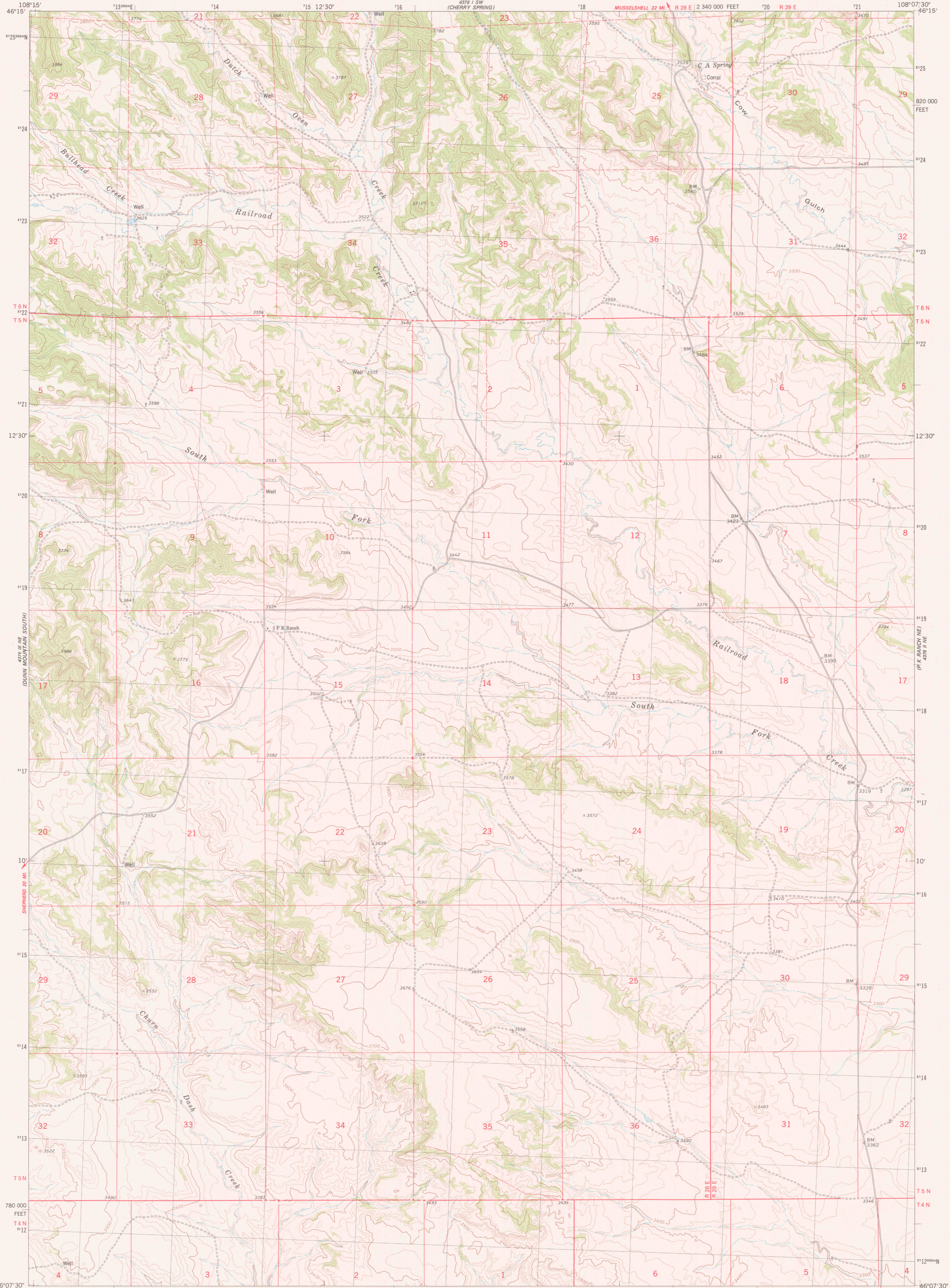
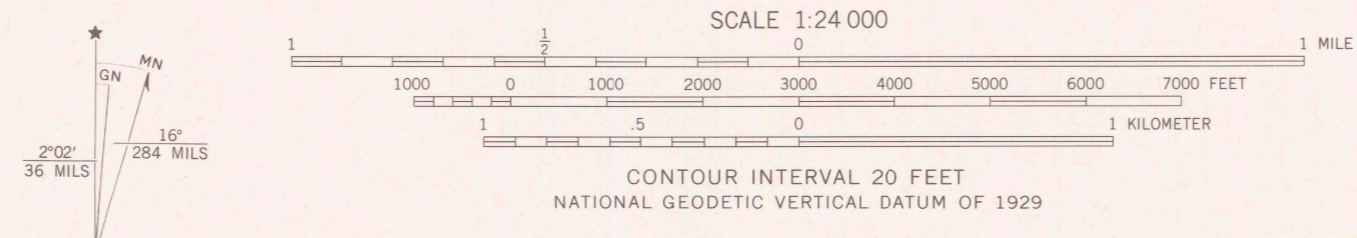


UNITED STATES
DEPARTMENT OF THE INTERIOR
GEOLOGICAL SURVEY

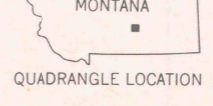
P K RANCH QUADRANGLE
MONTANA—YELLOWSTONE CO.
7.5 MINUTE SERIES (TOPOGRAPHIC)



Mapped, edited, and published by the Geological Survey
Control by USGS and NOS/NOAA
Topography by photogrammetric methods from aerial photographs taken 1973. Field checked 1974. Map edited 1980
Projection and 10,000-foot grid ticks: Montana coordinate system, south zone (Lambert conformal conic) 1000-meter Universal Transverse Mercator grid, zone 12 1927 North American datum
To place on the predicted North American Datum 1983 move the projection lines 8 meters north and 53 meters east as shown by dashed corner ticks
Fine red dashed lines indicate selected fence lines



ROAD CLASSIFICATION
 Primary highway, hard surface ——— Light duty road, hard or improved surface ———
 Secondary highway, hard surface ——— Unimproved road ———
 Interstate Route □ U. S. Route ○ State Route



USGS
Historical File
Topographic Division
P K RANCH, MONT.
N4607.5—W10807.5/7.5
1980
DMA 4376 II NW—SERIES V894

THIS MAP COMPLIES WITH NATIONAL MAP ACCURACY STANDARDS
FOR SALE BY U. S. GEOLOGICAL SURVEY, DENVER, COLORADO 80225, OR RESTON, VIRGINIA 22092
A FOLDER DESCRIBING TOPOGRAPHIC MAPS AND SYMBOLS IS AVAILABLE ON REQUEST

JUN 19 1980
1650