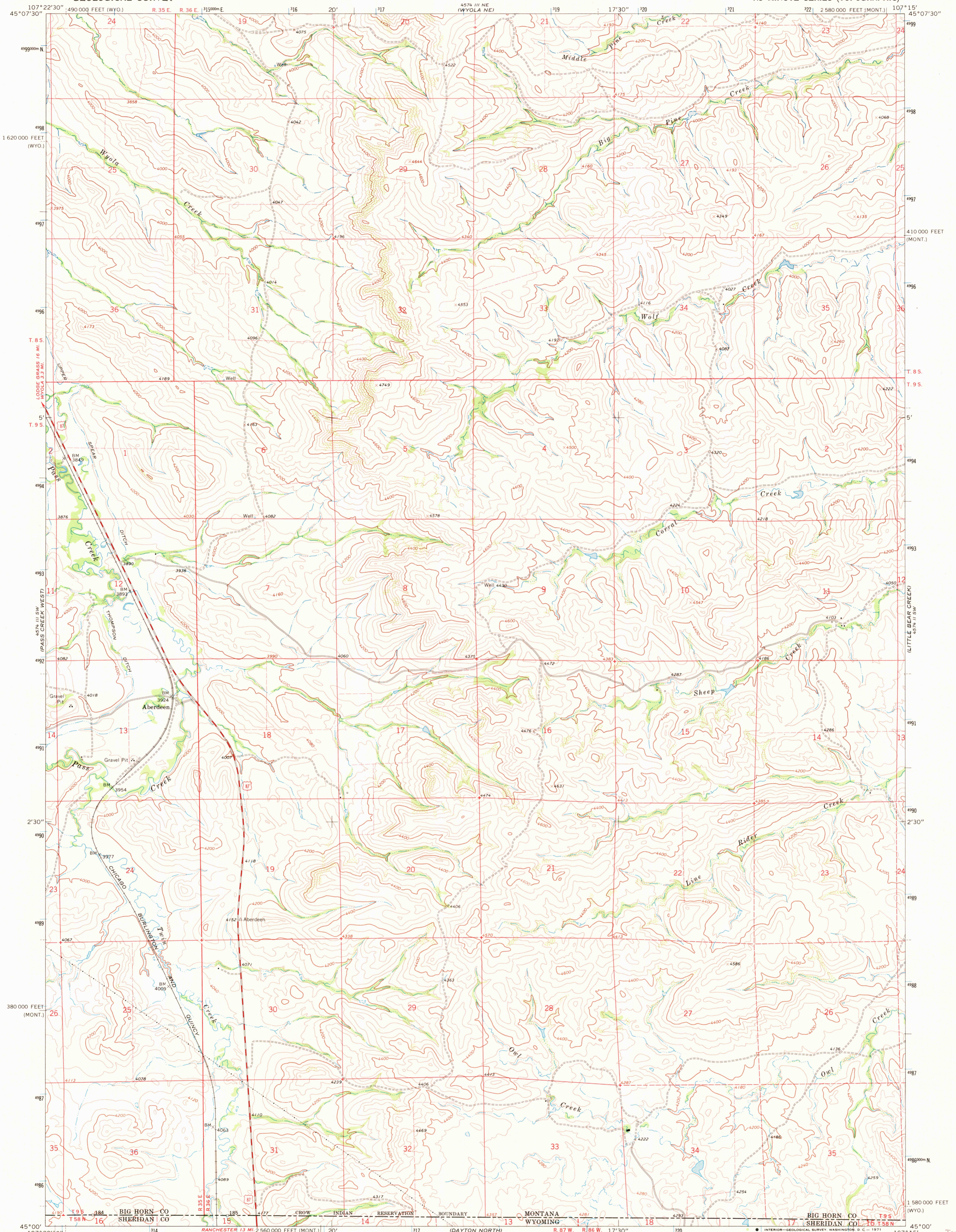
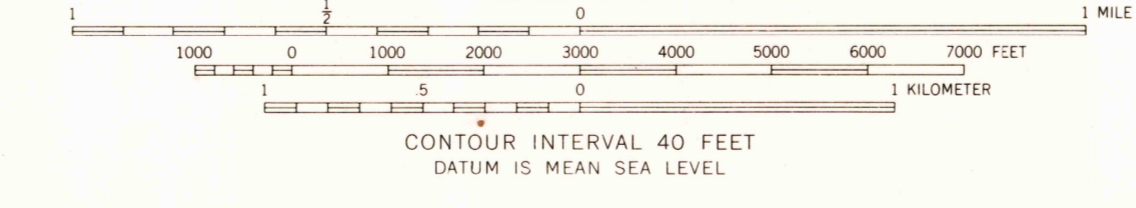
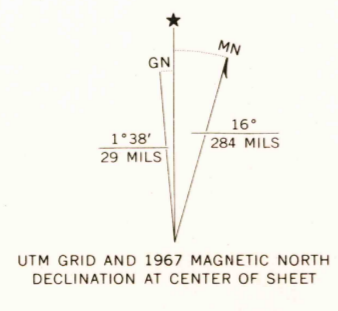


UNITED STATES
DEPARTMENT OF THE INTERIOR
GEOLOGICAL SURVEY

PASS CREEK EAST QUADRANGLE
MONTANA - WYOMING
7.5 MINUTE SERIES (TOPOGRAPHIC)



Mapped, edited, and published by the Geological Survey
Control by USGS and USC&GS
Topography by photogrammetric methods from aerial photographs taken 1966. Field checked 1967
Polyconic projection. 1927 North American datum
10,000-foot grids based on Montana coordinate system, south zone and Wyoming coordinate system, east central zone
1000-meter Universal Transverse Mercator grid ticks, zone 13, shown in blue
Fine red dashed lines indicate selected fence lines



ROAD CLASSIFICATION

Heavy-duty	Light-duty
Medium-duty	Unimproved dirt
U.S. Route	

PASS CREEK EAST, MONT. - WYO.
N4500-W10715/7.5

THIS MAP COMPLIES WITH NATIONAL MAP ACCURACY STANDARDS
FOR SALE BY U.S. GEOLOGICAL SURVEY, DENVER, COLORADO 80225, OR WASHINGTON, D. C. 20242
A FOLDER DESCRIBING TOPOGRAPHIC MAPS AND SYMBOLS IS AVAILABLE ON REQUEST

U.S.G.S.
FILE COPY
TOPOGRAPHIC DIVISION

1967
AMS 4574 III SE - SERIES V894

USGS
Historical File
Topographic Division

FEB 8 1971

3153