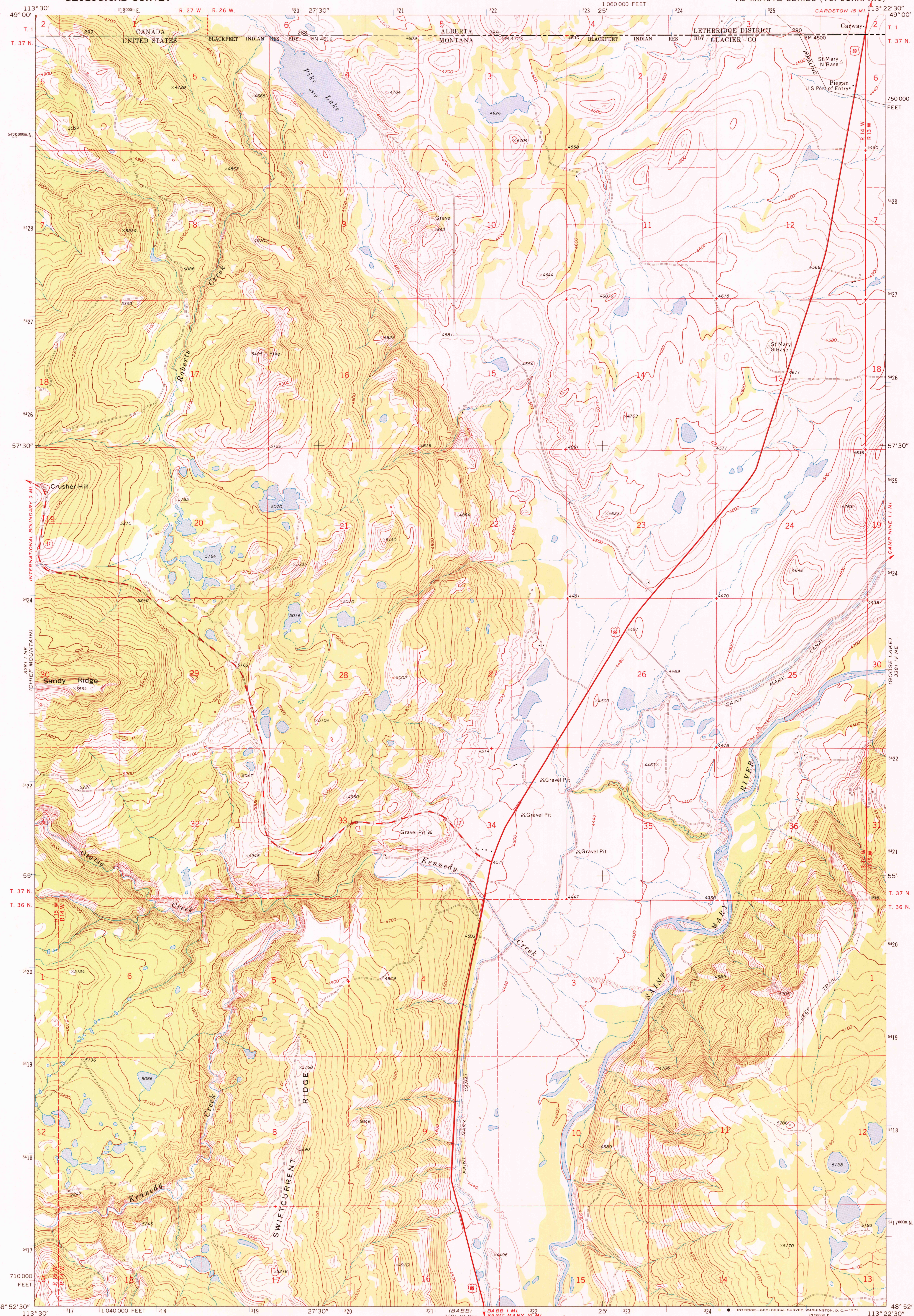
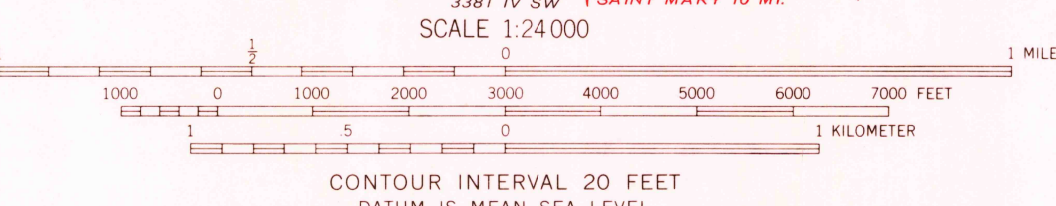
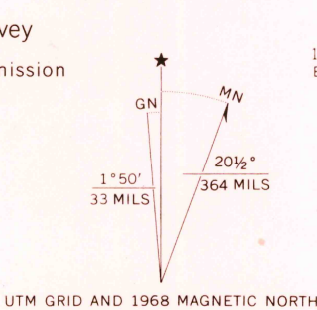


UNITED STATES
DEPARTMENT OF THE INTERIOR
GEOLOGICAL SURVEY

PIKE LAKE QUADRANGLE
MONTANA—ALBERTA
7.5 MINUTE SERIES (TOPOGRAPHIC)



Maped, edited, and published by the Geological Survey
Control by USGS, USC&GS and International Boundary Commission
Topography by photogrammetric methods from aerial
photographs taken 1966. Field checked 1968
Polyconic projection. 1927 North American datum
10,000-foot grid based on Montana coordinate system,
north zone
1000-meter Universal Transverse Mercator grid ticks,
zone 12, shown in blue
Fine red dashed lines indicate selected fence lines
Dotted land lines established by
Department of the Interior, Canada



ROAD CLASSIFICATION
Primary highway, all weather, hard surface
Secondary highway, all weather, hard surface
Light duty road, all weather, improved surface
Unimproved road, fair or dry weather
U. S. Route
State Route

PIKE LAKE, MONT.—ALTA.
N4852.5—W11322.5/7.5

1968
AMS 3381 IV NW—SERIES V894

USGS
HISTORICAL FILE
TOPOGRAPHIC DIVISION

JUN 0 2 1972

3085