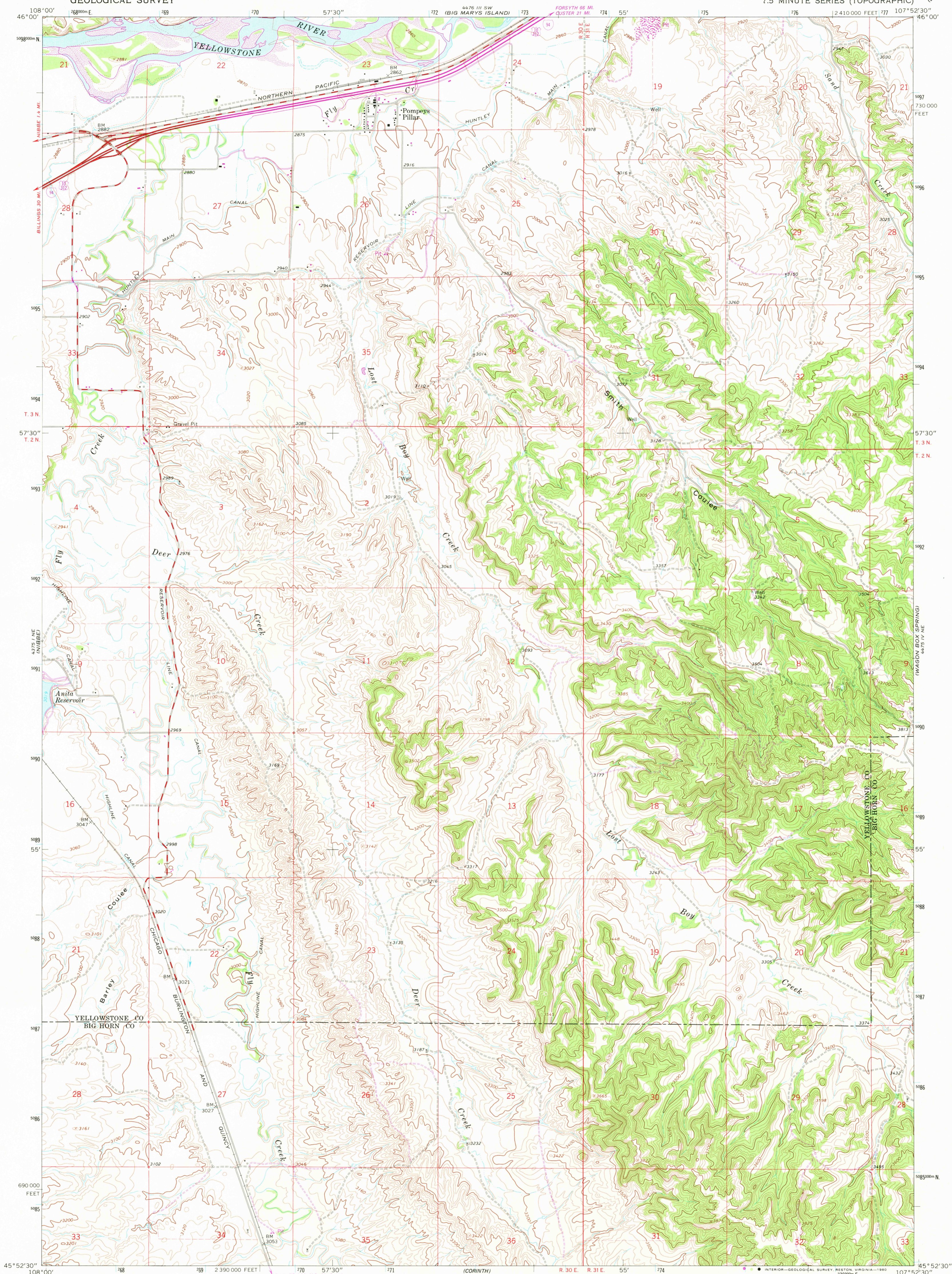
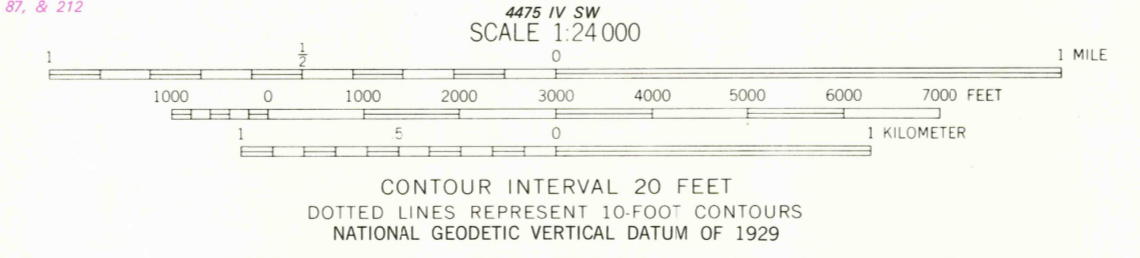
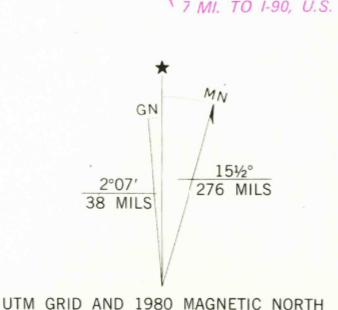


UNITED STATES
DEPARTMENT OF THE INTERIOR
GEOLOGICAL SURVEY

POMPEYS PILLAR QUADRANGLE
MONTANA
7.5 MINUTE SERIES (TOPOGRAPHIC)



Mapped, edited, and published by the Geological Survey as part of the Department of the Interior program for the development of the Missouri River Basin Control by USGS and USC&GS
Topography by photogrammetric methods from aerial photographs taken 1966. Field checked 1967
Polyconic projection. 1927 North American datum 10,000-foot grid based on Montana coordinate system, south zone
1000-meter Universal Transverse Mercator grid ticks, zone 13, shown in blue
To place on the predicted North American Datum 1983 move the projection lines 8 meters north and 52 meters east as shown by dashed corner ticks
Revisions shown in purple compiled from aerial photographs taken 1978. Map edited 1980. This information not field checked



ROAD CLASSIFICATION

Heavy-duty	Light-duty
Medium-duty	Unimproved dirt
Interstate Route	U.S. Route



POMPEYS PILLAR, MONT.
N4552.5—W10752.5/7.5
1967
PHOTOREVISED 1980
DMA 4475 IV NW—SERIES V894

USGS
Historical File
Topographic Division
DEC 12 1980
2050
RETURN TO:
USGS NMD HISTORICAL MAP ARCHIVES