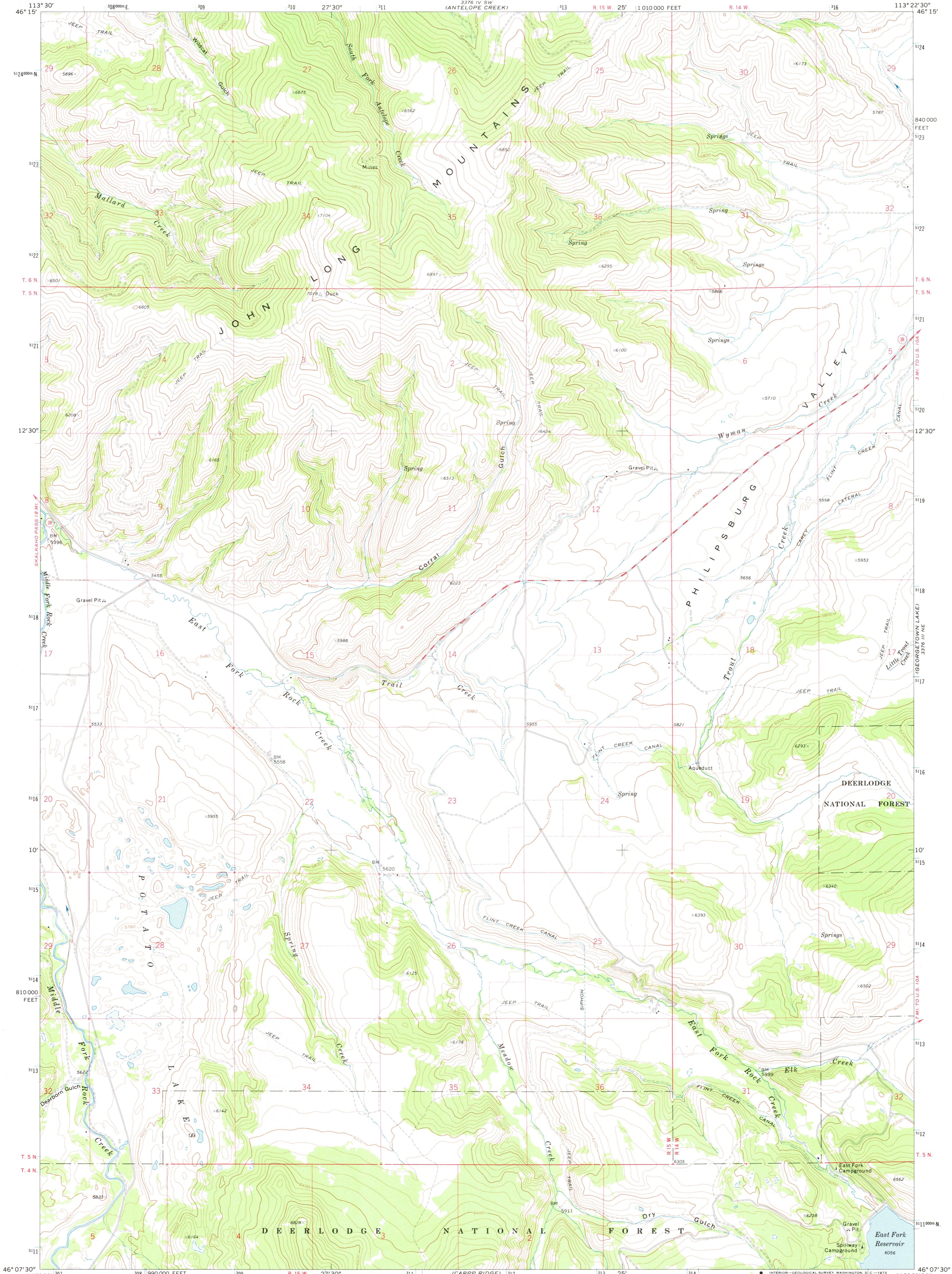
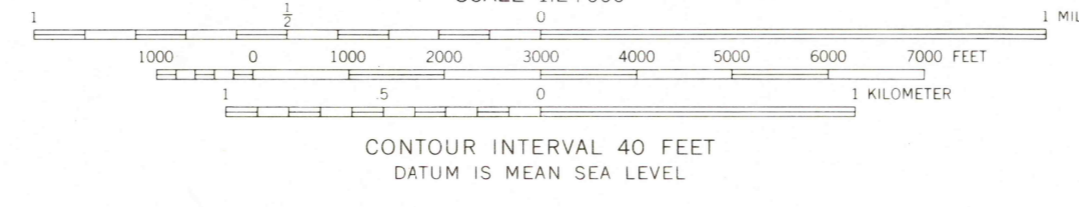
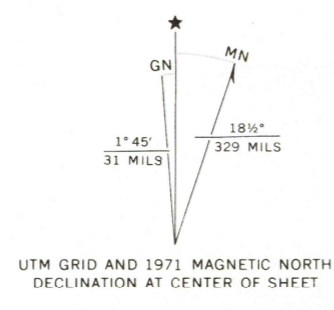


3376 IV SE  
(PHILIPSBURG)



Mapped by the U. S. Forest Service  
Edited and published by the Geological Survey  
Control by USGS, USF&WS, and U. S. Forest Service  
Topography by photogrammetric methods from aerial  
photographs taken 1964. Field checked by USGS 1971  
Polyconic projection. 1927 North American datum  
10,000-foot grid based on Montana coordinate system,  
south zone  
1000-meter Universal Transverse Mercator grid ticks,  
zone 12, shown in blue  
Fine red dashed lines indicate selected fence lines  
Where omitted, land lines have not been established



ROAD CLASSIFICATION

Primary highway, hard surface	Light-duty road, hard or improved surface
Secondary highway, hard surface	Unimproved road
Interstate Route	U. S. Route
	State Route

OCT 19 1973

POTATO LAKES, MONT.  
N4607.5-W11322.5/7.5

RETURN TO:  
USGS NMD HISTORICAL MAP ARCHIVES

THIS MAP COMPLIES WITH NATIONAL MAP ACCURACY STANDARDS  
FOR SALE BY U. S. GEOLOGICAL SURVEY, DENVER, COLORADO 80225, OR WASHINGTON, D. C. 20242  
A FOLDER DESCRIBING TOPOGRAPHIC MAPS AND SYMBOLS IS AVAILABLE ON REQUEST

1971  
AMS 3376 III NW—SERIES V894

3340  
30