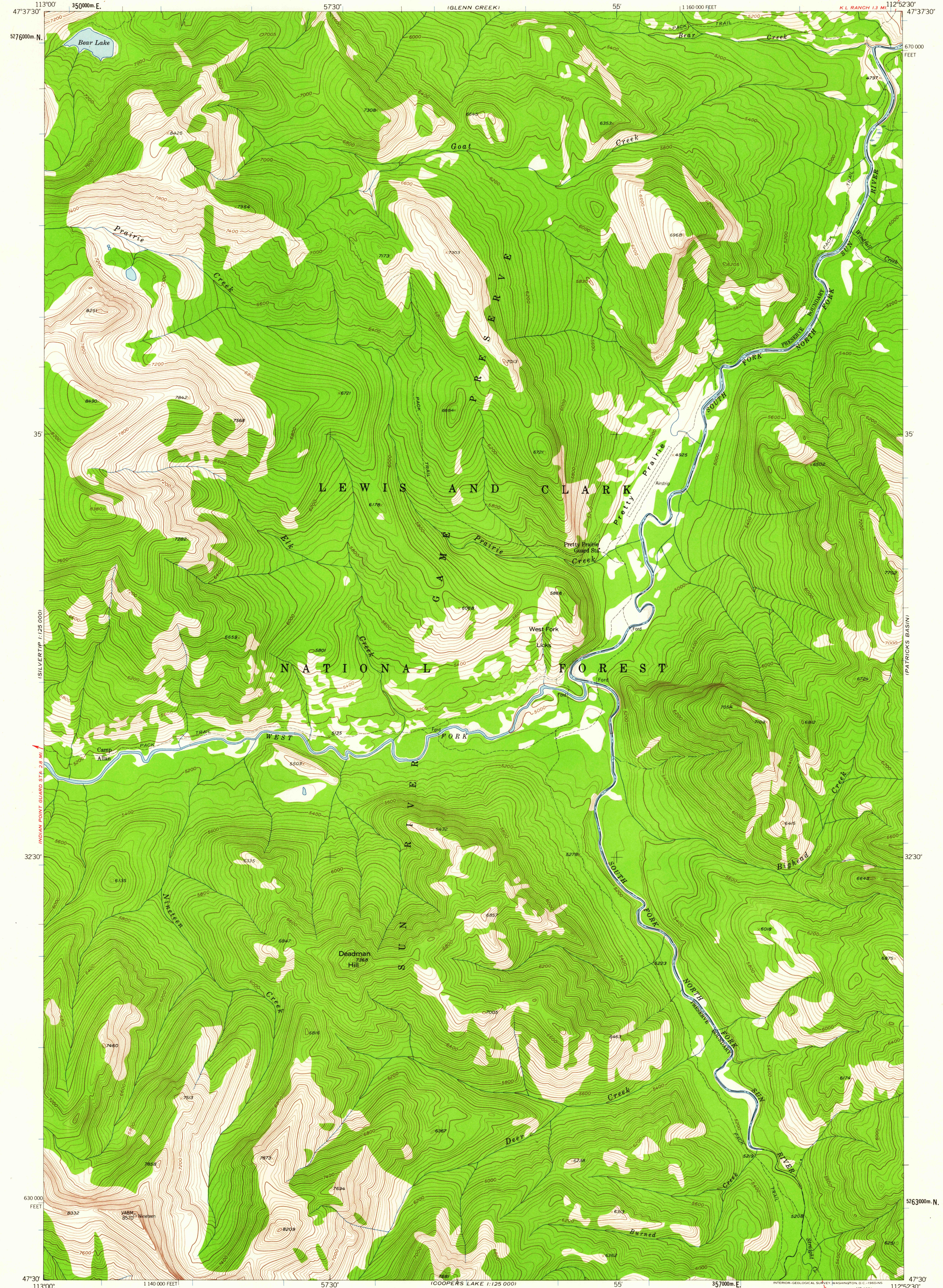
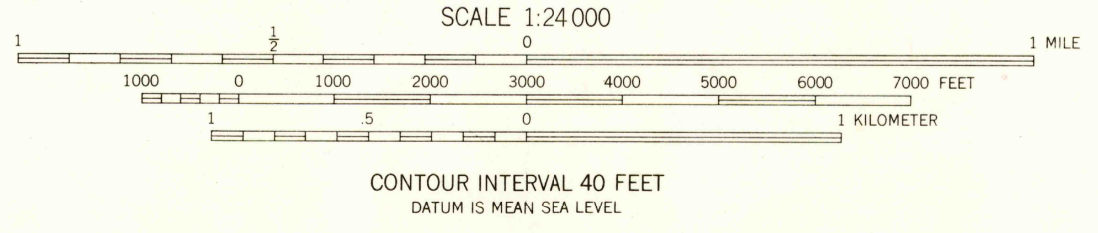
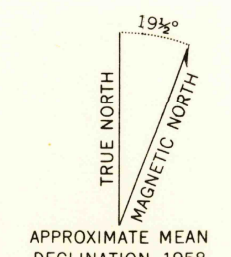


SILVERTIE  
1:250,000

ARSENIC PEAK



Mapped, edited, and published by the Geological Survey  
Control by USGS and USC&GS  
Topography from aerial photographs by photogrammetric methods  
Aerial photographs taken 1955. Field check 1958  
Polyconic projection. 1927 North American datum  
10,000-foot grid based on Montana coordinate system,  
central zone  
1000-meter Universal Transverse Mercator grid ticks,  
zone 12, shown in blue  
Unchecked elevations are shown in brown



CONTOUR INTERVAL 40 FEET  
DATUM IS MEAN SEA LEVEL



ROAD CLASSIFICATION  
Trails

PRETTY PRAIRIE, MONT.  
N4730—W11252.5/75  
1958

THIS MAP COMPLIES WITH NATIONAL MAP ACCURACY STANDARDS  
FOR SALE BY U.S. GEOLOGICAL SURVEY, DENVER 25, COLORADO OR WASHINGTON 25, D.C.  
A FOLDER DESCRIBING TOPOGRAPHIC MAPS AND SYMBOLS IS AVAILABLE ON REQUEST

USGS  
Historical File  
Topographic Division

U.S.G.S.  
FILE COPY  
TOPOGRAPHIC SURVEY

FEB 13 1960  
2010