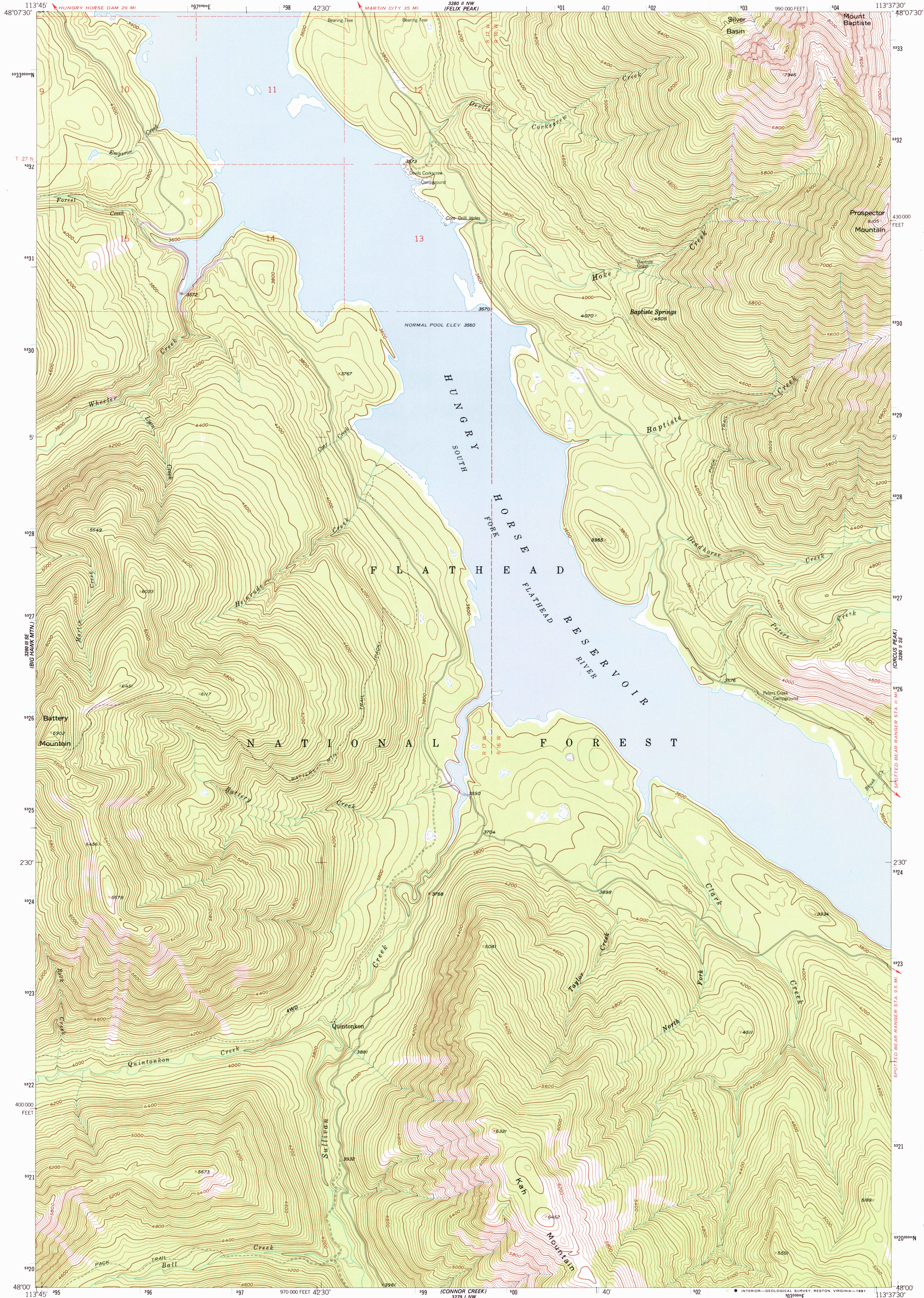


UNITED STATES  
DEPARTMENT OF THE INTERIOR  
GEOLOGICAL SURVEY

QUINTONKON QUADRANGLE  
MONTANA-FLATHEAD CO.  
7.5 MINUTE SERIES (TOPOGRAPHIC)



Mapped, edited, and published by the Geological Survey

Control by USGS and NOS/NOAA

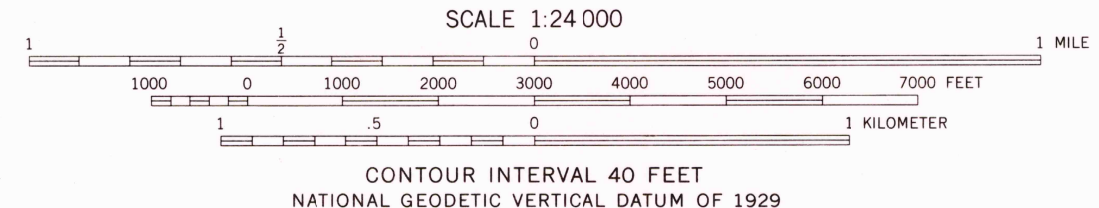
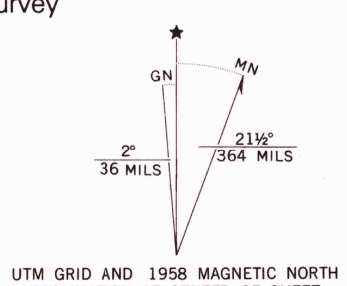
Topography by photogrammetric methods from aerial  
photographs taken 1954-1955. Field checked 1958.

Polycyclic projection. 1927 North American Datum  
10,000-foot grid based on Montana coordinate system,  
north zone 1000-meter Universal Transverse  
Mercator grid ticks, zone 12, shown in blue.

The difference between 1927 North American Datum and  
North American Datum of 1983 (NAD 83) for 7.5 minute  
intersections is given in USGS Bulletin 1875. The NAD 83  
is shown by dashed corner ticks.

Dashed land lines indicated approximate locations  
Land lines unsurveyed except in part of T 27 N-R 17 W

There may be private inholdings within the boundaries of  
the National or State reservations shown on this map.



ROAD CLASSIFICATION  
Light-duty ————— Unimproved dirt - - - - -

QUINTONKON, MONT.  
48113-A6-TF-024

1958

DMA 3280 II SW-SERIES V894