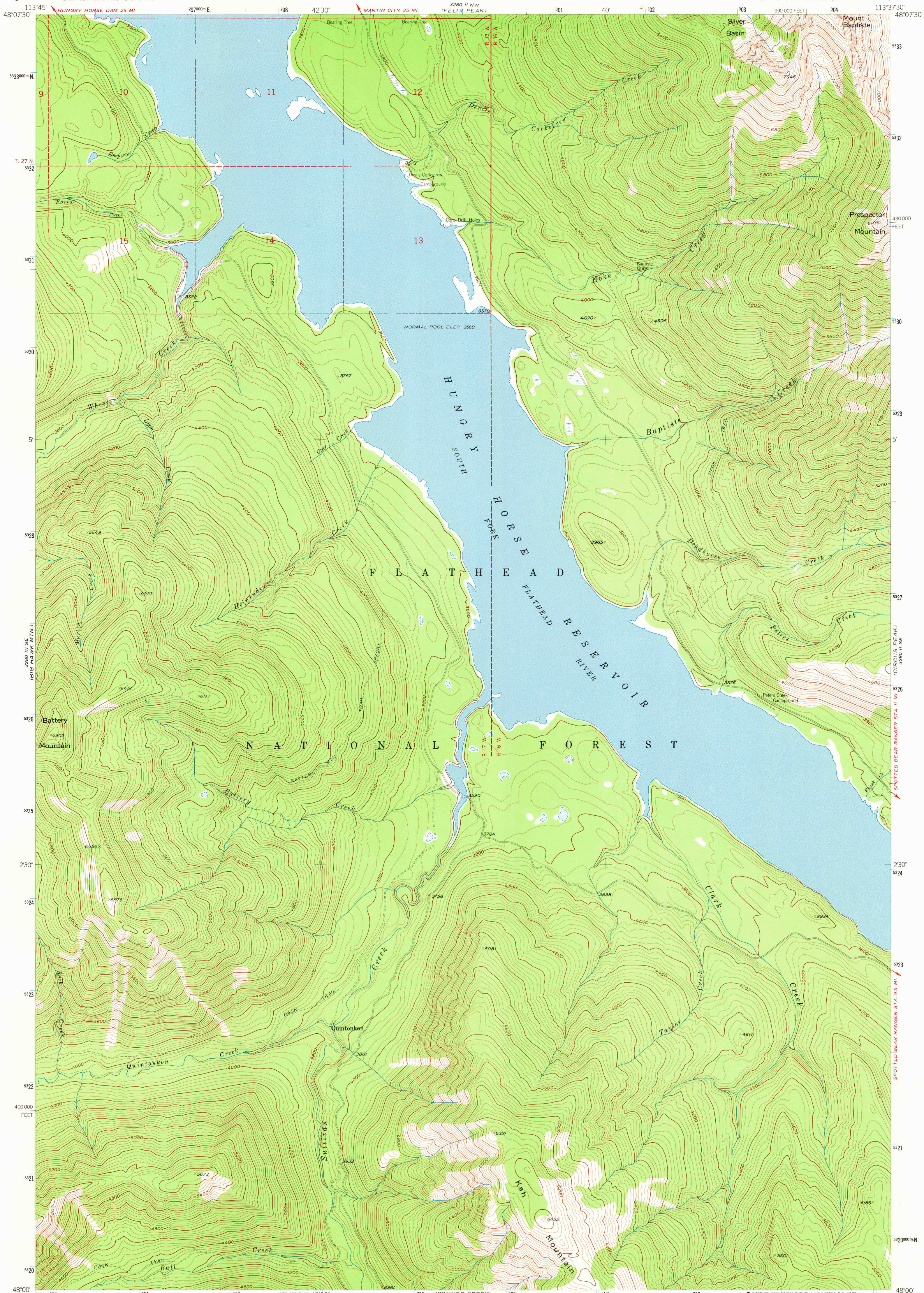
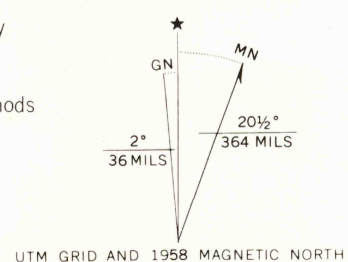


UNITED STATES  
DEPARTMENT OF THE INTERIOR  
GEOLOGICAL SURVEY

QUINTONKON QUADRANGLE  
MONTANA-FLATHEAD CO.  
7.5 MINUTE SERIES (TOPOGRAPHIC)



Mapped, edited, and published by the Geological Survey  
Control by USGS and USC&GS  
Topography from aerial photographs by photogrammetric methods  
Aerial photographs taken 1954-1955. Field check 1958  
Polyconic projection. 1927 North American datum  
10,000-foot grid based on Montana coordinate system,  
north zone  
1000-meter Universal Transverse Mercator grid ticks,  
zone 12, shown in blue  
Dashed land lines indicate approximate locations  
Land lines unsurveyed except in part of T. 27 N., R. 17 W.



SCALE 1:24,000  
CONTOUR INTERVAL 40 FEET  
DATUM IS MEAN SEA LEVEL



ROAD CLASSIFICATION  
Light duty ..... Unimproved dirt .....

QUINTONKON, MONT.  
N4800-W11337.5/7.5

1958

JUN 15 1973

AMS 3280 II SW-SERIES V894