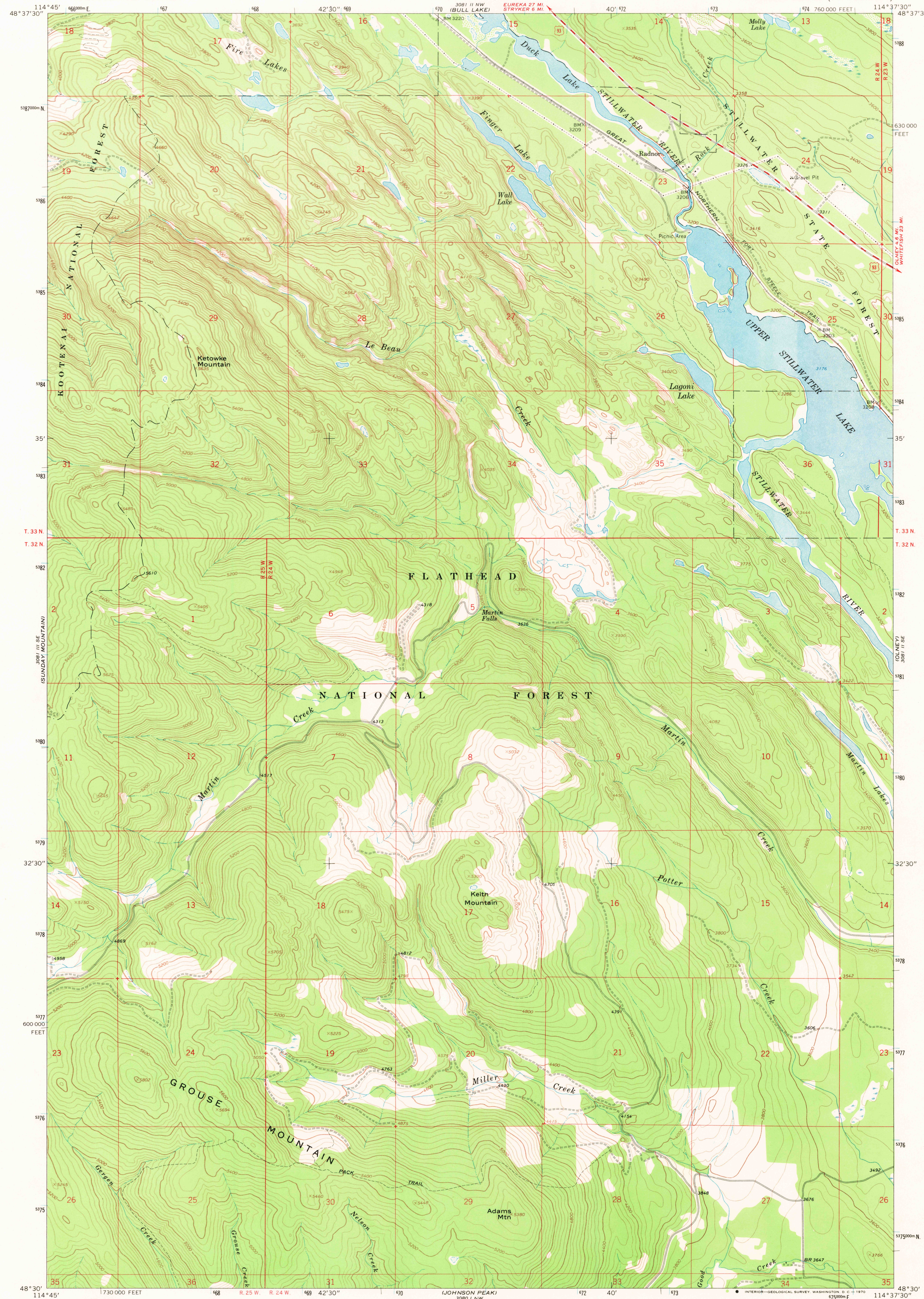


3081 II SE
(STRYKER)

UNITED STATES
DEPARTMENT OF THE INTERIOR
GEOLOGICAL SURVEY

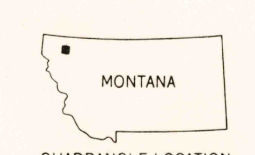
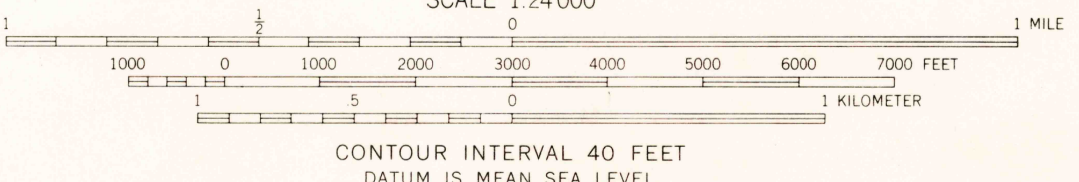
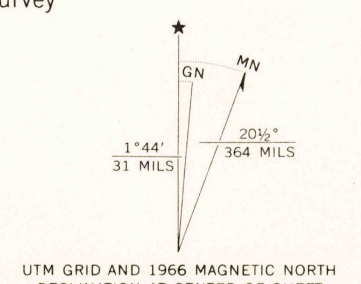
RADNOR QUADRANGLE
MONTANA—FLATHEAD CO.
7.5 MINUTE SERIES (TOPOGRAPHIC)

3081 II NW
(UPPER WHITEFISH
LAKE)



3081 III SE
(SUNDAY MOUNTAIN)

Mapped, edited, and published by the Geological Survey
Control by USGS and USC&GS
Topography by photogrammetric methods from aerial
photographs taken 1965. Field checked 1966
Polyconic projection. 1927 North American datum
10,000-foot grid based on Montana coordinate system,
north zone
1000-meter Universal Transverse Mercator grid ticks,
zone 11, shown in blue



ROAD CLASSIFICATION
Medium-duty ——— Light-duty ———
Unimproved dirt - - - - - U.S. Route

RADNOR, MONT.
N4830—W11437.5/7.5
1966

U.S.G.S.
FILE COPY
TOPOGRAPHIC DIVISION

2045
DEC 23 1970

AMS 3081 II SW—SERIES V894