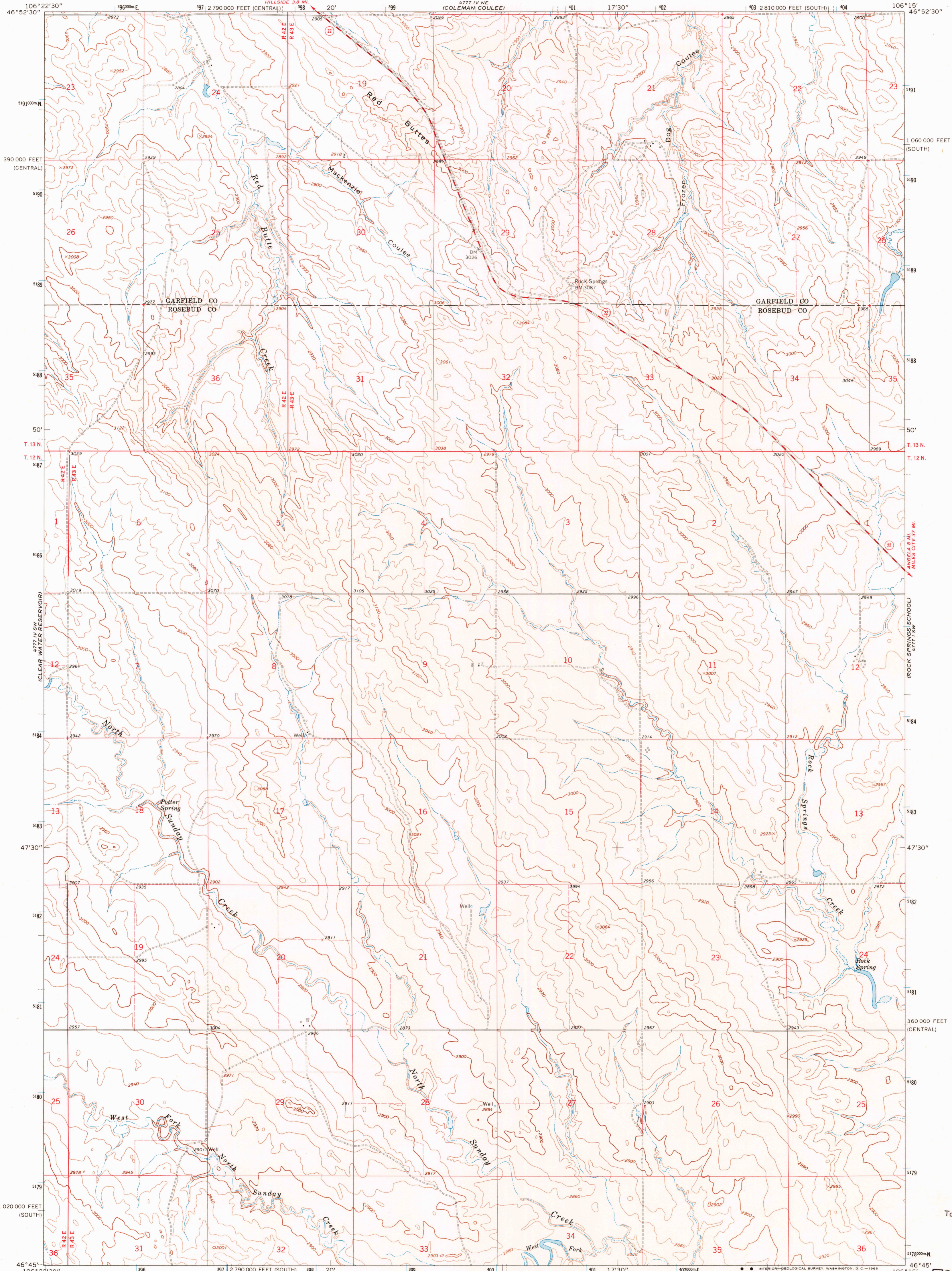


4777 IV SE
MILES SIDE

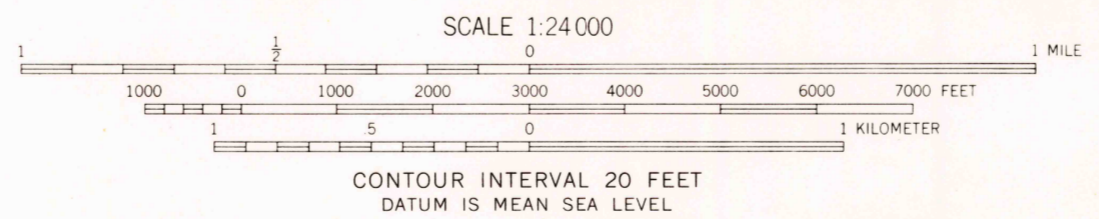
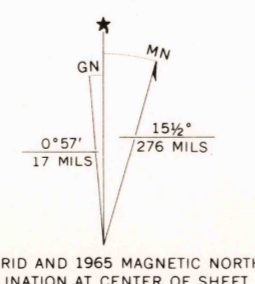
UNITED STATES
DEPARTMENT OF THE INTERIOR
GEOLOGICAL SURVEY

RED BUTTES QUADRANGLE
MONTANA
7.5 MINUTE SERIES (TOPOGRAPHIC)

4777 IV NW
LITTLE CHALK BUTTE



Mapped, edited, and published by the Geological Survey
Control by USGS and USC&GS
Topography by photogrammetric methods from aerial
photographs taken 1964. Field checked 1965
Polyconic projection. 1927 North American datum
10,000-foot grids based on Montana coordinate system,
south and central zones
1000-meter Universal Transverse Mercator grid ticks,
zone 13, shown in blue
Fine red dashed lines indicate selected fence lines



ROAD CLASSIFICATION
Medium-duty ——— Light-duty ———
Unimproved dirt - - - - -
State Route ○

RED BUTTES, MONT.
N4645-W10615/7.5

U.S.G.S.
FILE COPY
TOPOGRAPHIC DIVISION

AUG 1 1969
2760

THIS MAP COMPLIES WITH NATIONAL MAP ACCURACY STANDARDS
FOR SALE BY U. S. GEOLOGICAL SURVEY, DENVER, COLORADO 80225, OR WASHINGTON, D. C. 20242
A FOLDER DESCRIBING TOPOGRAPHIC MAPS AND SYMBOLS IS AVAILABLE ON REQUEST

1965
AMS 4777 IV SE—SERIES V894