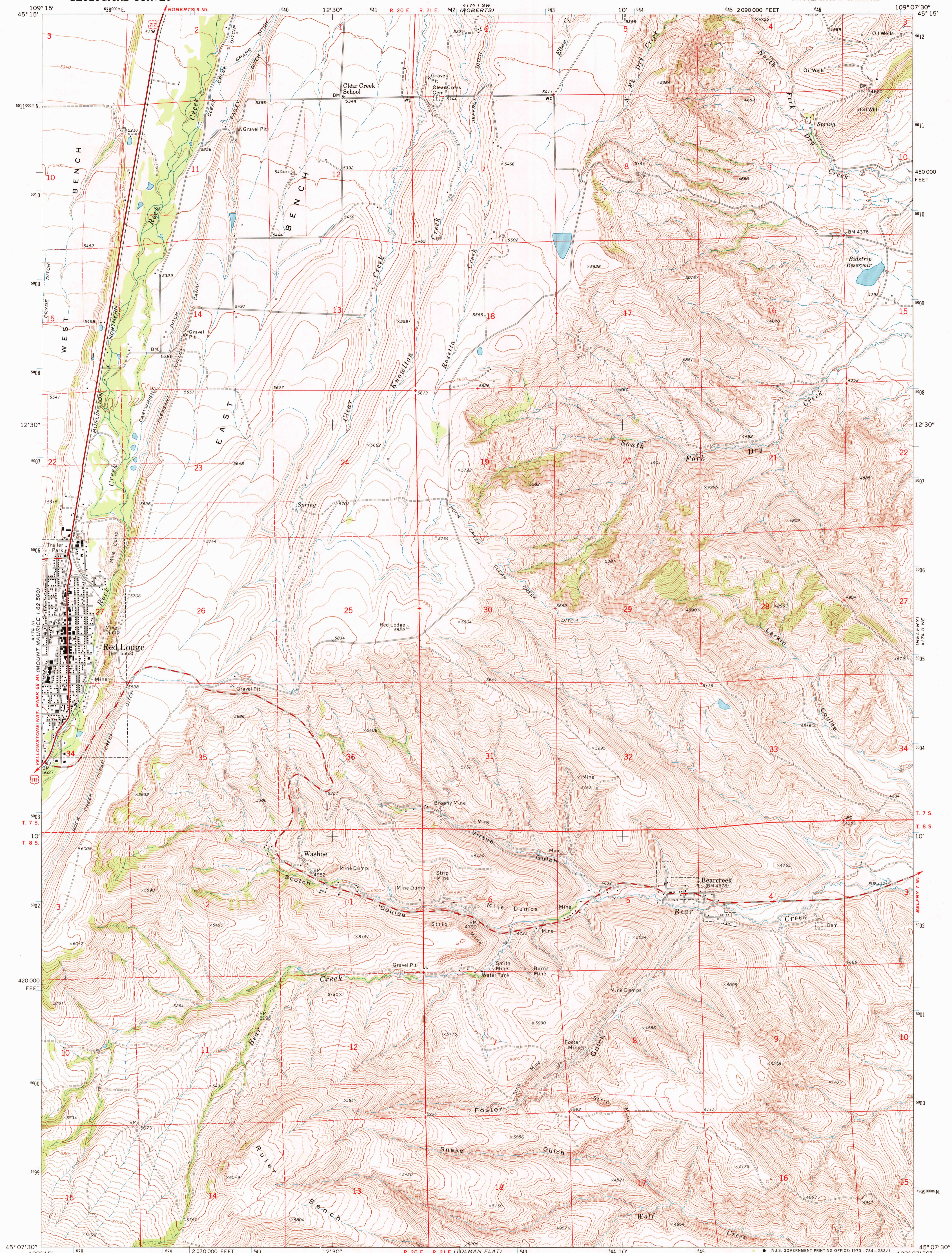


UNITED STATES  
DEPARTMENT OF THE INTERIOR  
GEOLOGICAL SURVEY

RED LODGE EAST QUADRANGLE  
MONTANA—CARBON CO.  
7.5 MINUTE SERIES (TOPOGRAPHIC)  
NW 1/4 RED LODGE 15' QUADRANGLE



Mapped, edited, and published by the Geological Survey

Control by USGS and USC&GS

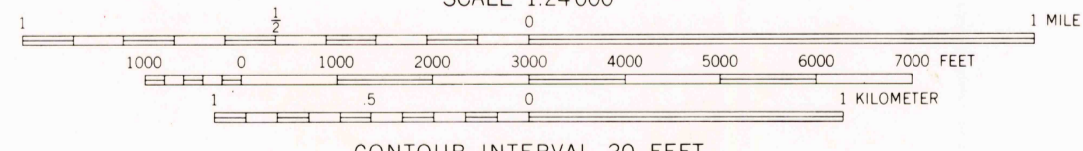
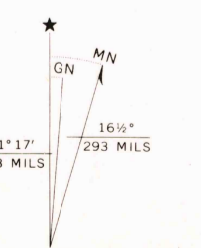
Topography by photogrammetric methods from aerial photographs taken 1968. Field checked 1969

Polyconic projection. 1927 North American datum 10,000-foot grid based on Montana coordinate system, south zone

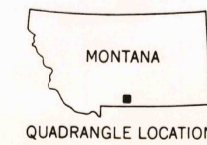
1000-meter Universal Transverse Mercator grid ticks, zone 12, shown in blue

Fine red dashed lines indicate selected fence lines

Land lines in part, are based on cultural developments and are not reflected in the original land survey



CONTOUR INTERVAL 20 FEET  
DATUM IS MEAN SEA LEVEL



QUADRANGLE LOCATION

ROAD CLASSIFICATION	
Primary highway, hard surface	Light-duty road, hard or improved surface
Secondary highway, hard surface	Unimproved road
Interstate Route	U. S. Route
	State Route

RED LODGE EAST, MONT.  
NW 1/4 RED LODGE 15' QUADRANGLE  
N4507.5—W10907.5/7.5

1969

AMS 4174 II NW—SERIES V894

THIS MAP COMPLIES WITH NATIONAL MAP ACCURACY STANDARDS  
FOR SALE BY U. S. GEOLOGICAL SURVEY, DENVER, COLORADO 80225, OR WASHINGTON, D. C. 20242  
A FOLDER DESCRIBING TOPOGRAPHIC MAPS AND SYMBOLS IS AVAILABLE ON REQUEST

JUN 1 1973  
Ding  
2500

Historical File  
Topographic Division

WOLLEBECK DRAW  
1:75,000