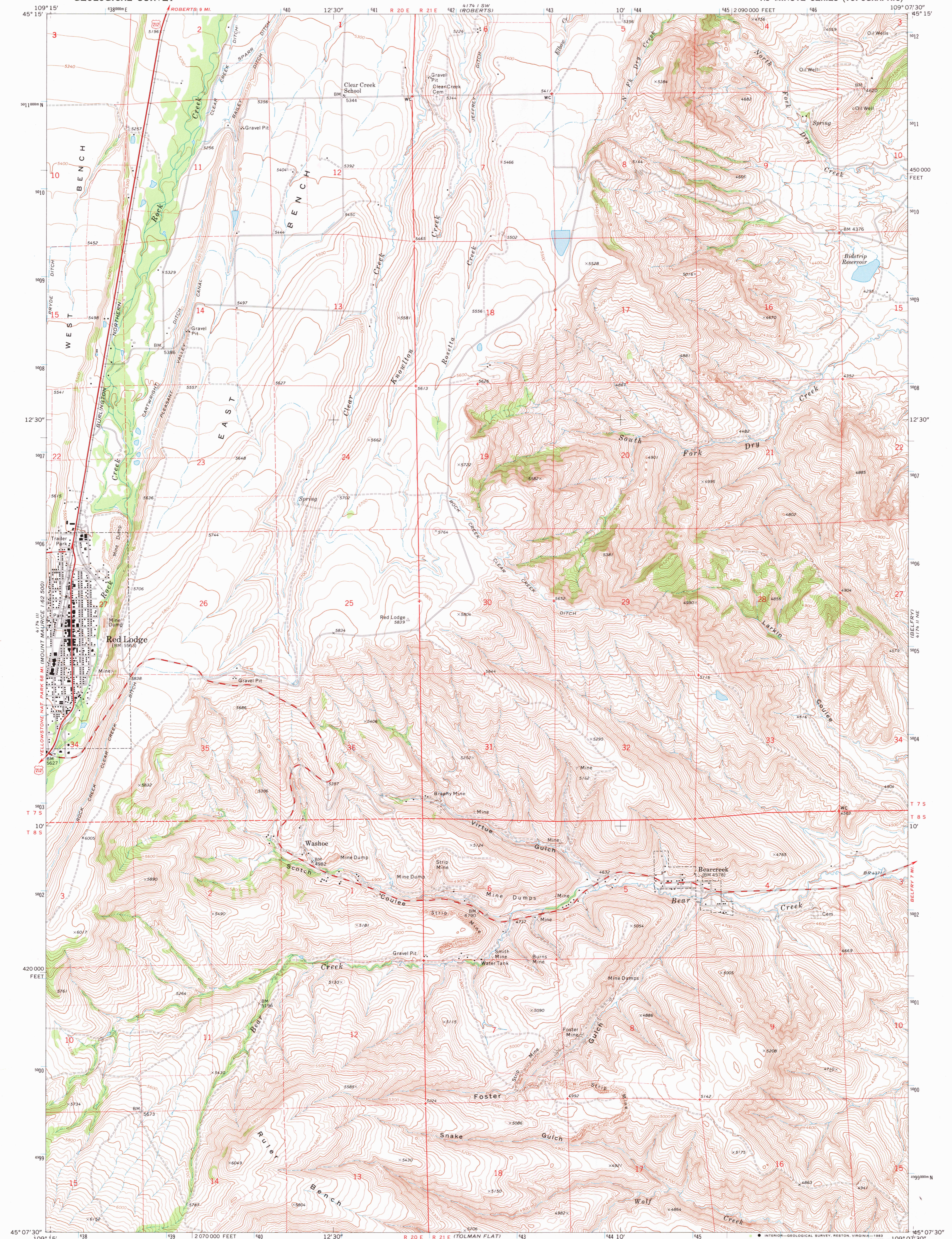
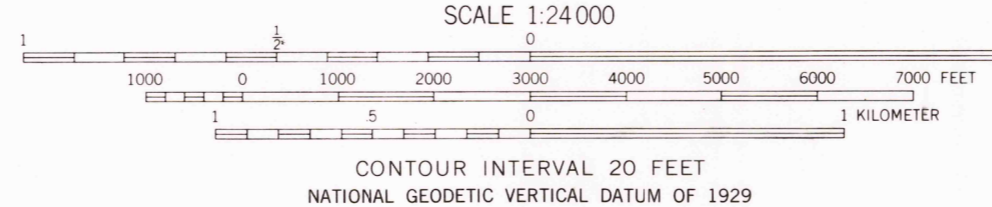
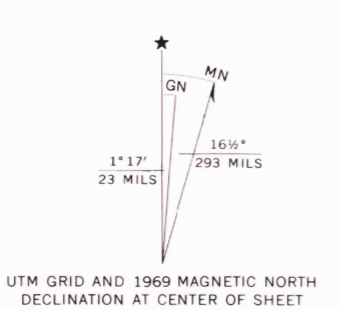


UNITED STATES
DEPARTMENT OF THE INTERIOR
GEOLOGICAL SURVEY

RED LODGE EAST QUADRANGLE
MONTANA-CARBON CO.
7.5 MINUTE SERIES (TOPOGRAPHIC)

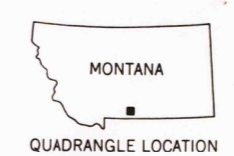


Mapped, edited, and published by the Geological Survey
Control by USGS and NOS/NOAA
Topography by photogrammetric methods from aerial photographs taken 1968. Field checked 1969
Polyconic projection. 1927 North American datum 10,000-foot grid based on Montana coordinate system, south zone
1000-meter Universal Transverse Mercator grid ticks, zone 12, shown in blue
Fine red dashed lines indicate selected fence lines
Land lines in part, are based on cultural developments and are not reflected in the original land survey
To place on the predicted North American Datum 1983 move the projection lines 9 meters north and 55 meters east as shown by dashed corner ticks



ROAD CLASSIFICATION

Primary highway, hard surface	Light-duty road, hard or improved surface
Secondary highway, hard surface	Unimproved road
Interstate Route	U. S. Route
	State Route



RED LODGE EAST, MONT.
N4507.5-W10907.5/7.5

1969
DMA 4174 II NW-SERIES V894

RETURN TO:
USGS NMD HISTORICAL MAP ARCHIVES