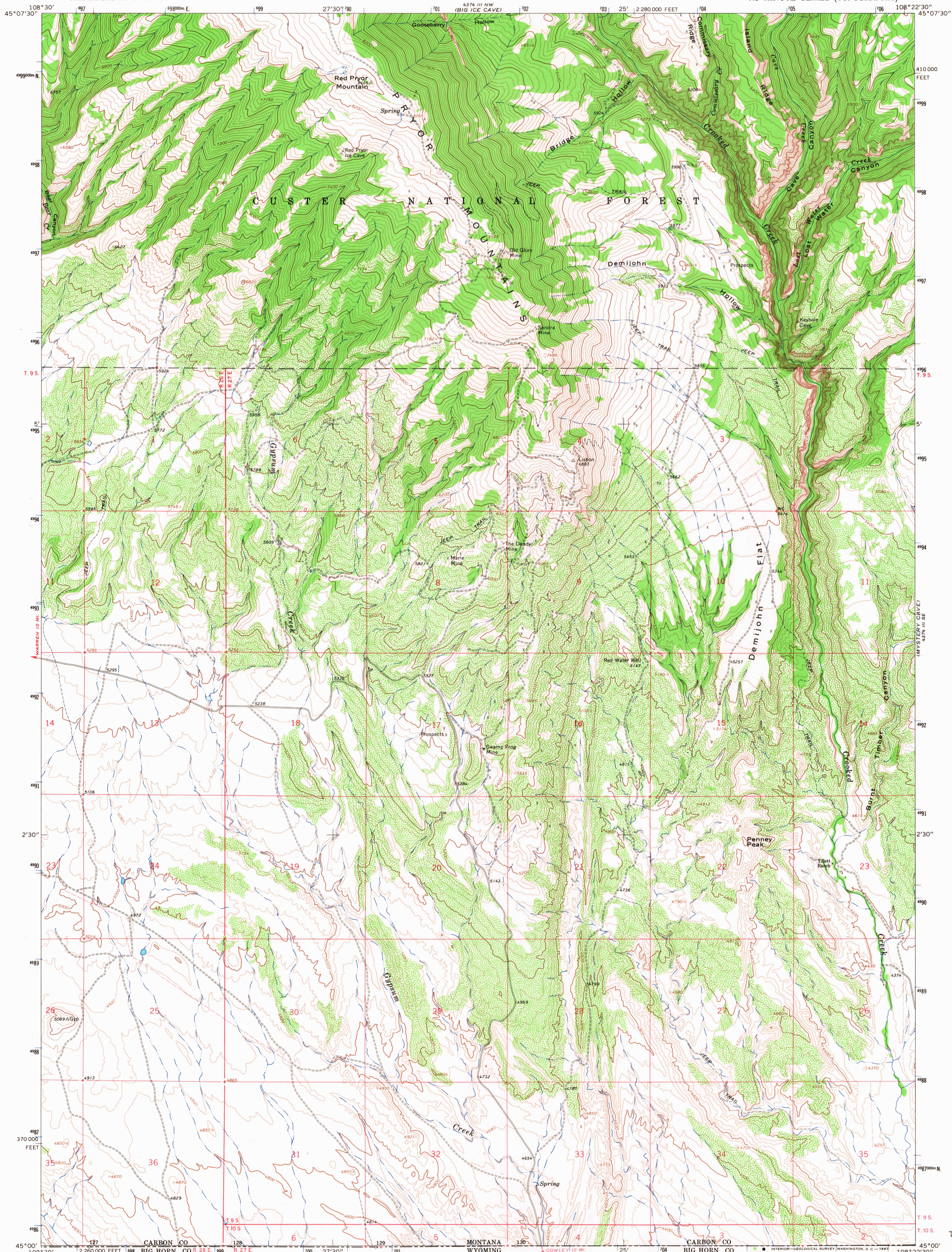
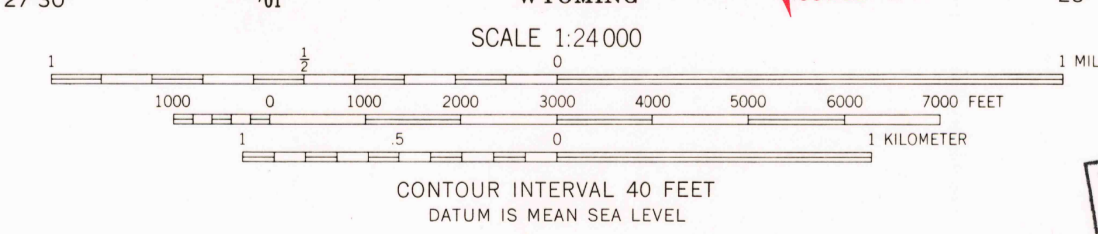
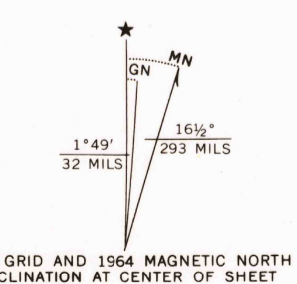


4374 III SE
EAST PRYOR
MOUNTAIN



Mapped, edited, and published by the Geological Survey as part of the Department of the Interior program for the development of the Missouri River Basin Control by USGS, USC&GS, and U. S. Forest Service Topography by photogrammetric methods from aerial photographs taken 1963. Field checked 1964
Polyconic projection. 1927 North American datum 10,000-foot grid based on Montana coordinate system, south zone 1000-meter Universal Transverse Mercator grid ticks, zone 12, shown in blue
Fine red dashed lines indicate selected fence lines
Where omitted, land lines have not been established



U.S.G.S.
FILE COPY
TOPOGRAPHIC DIVISION

ROAD CLASSIFICATION
Light-duty _____ Unimproved dirt _____

THIS MAP COMPLIES WITH NATIONAL MAP ACCURACY STANDARDS
FOR SALE BY U.S. GEOLOGICAL SURVEY, DENVER, COLORADO 80225, OR WASHINGTON, D. C. 20242
A FOLDER DESCRIBING TOPOGRAPHIC MAPS AND SYMBOLS IS AVAILABLE ON REQUEST

RED PRYOR MOUNTAIN, MONT.
N4500-W10822.5/7.5

1964

AMS 4374 III SW-SERIES V894

USGS
Historical File
Topographic Division

4374 III SE
EAST PRYOR
MOUNTAIN

3525
FEB 1969