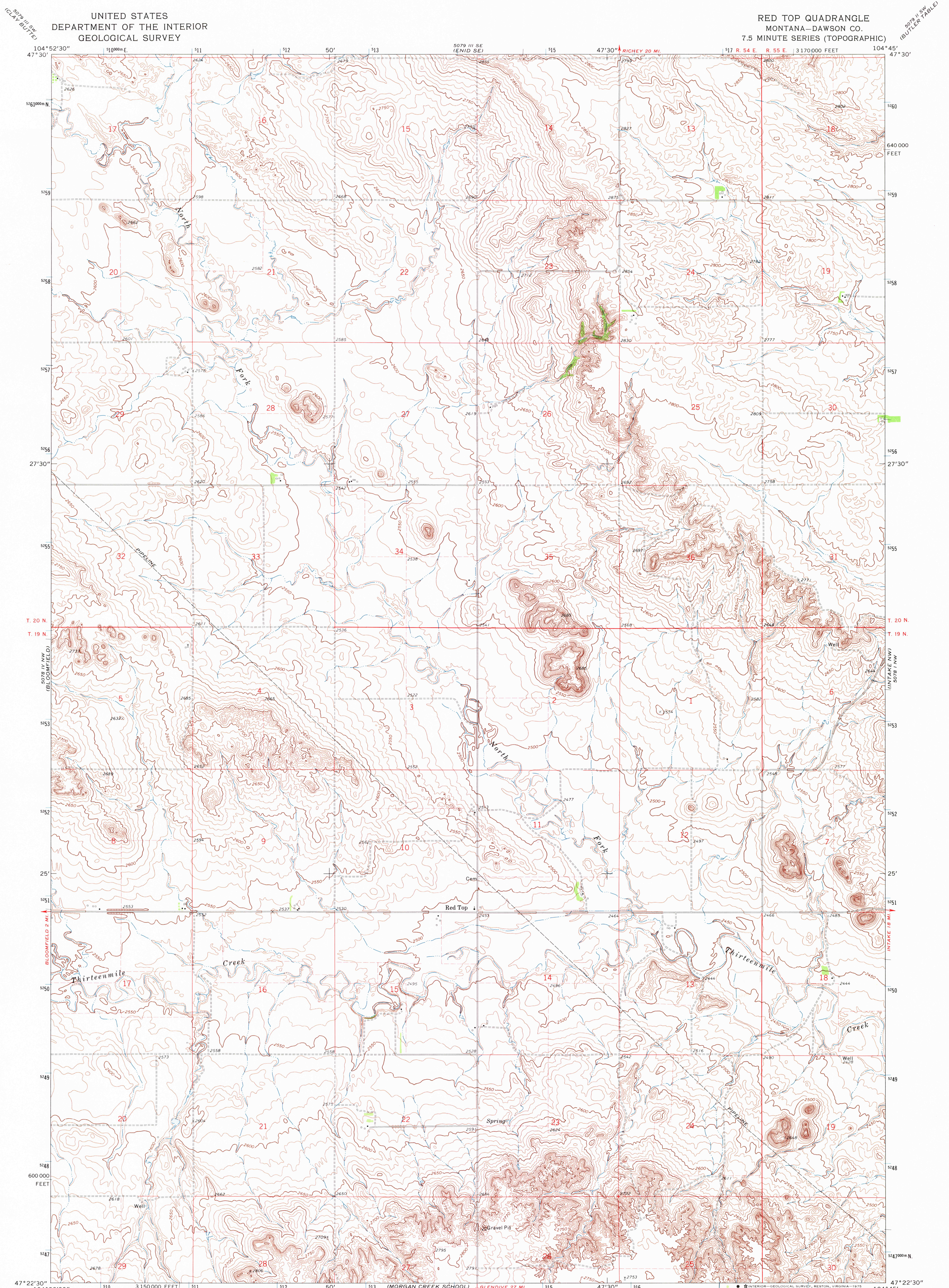
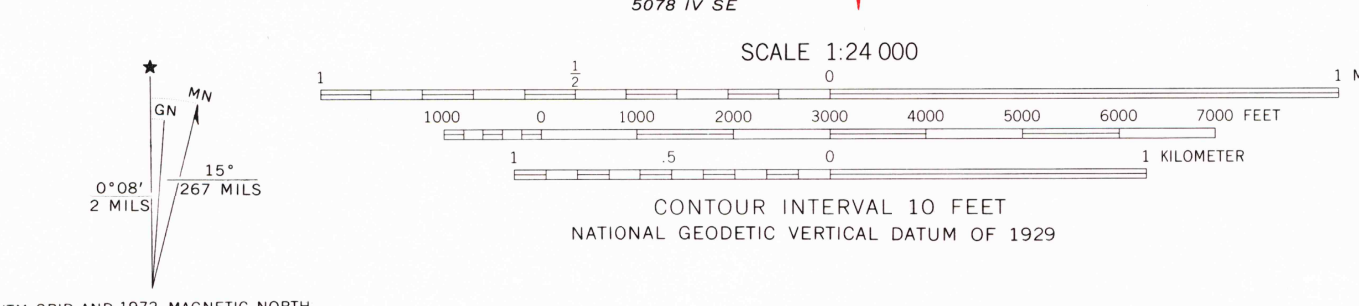


UNITED STATES  
DEPARTMENT OF THE INTERIOR  
GEOLOGICAL SURVEY

RED TOP QUADRANGLE  
MONTANA—DAWSON CO.  
7.5 MINUTE SERIES (TOPOGRAPHIC)



Mapped, edited, and published by the Geological Survey  
Control by USGS and USC&GS  
Topography by photogrammetric methods from aerial photographs taken 1970. Field checked 1972  
Projection and 10,000-foot grid ticks: Montana coordinate system, central zone (Lambert conformal conic)  
1000-meter Universal Transverse Mercator grid ticks, zone 13, shown in blue. 1927 North American datum  
Fine red dashed lines indicate selected fence lines



ROAD CLASSIFICATION  
 Primary highway, hard surface ——— Light-duty road, hard or improved surface ———  
 Secondary highway, hard surface ——— Unimproved road ———  
 Interstate Route ——— U. S. Route ——— State Route ———



THIS MAP COMPLIES WITH NATIONAL MAP ACCURACY STANDARDS  
FOR SALE BY U.S. GEOLOGICAL SURVEY, DENVER, COLORADO 80225, OR RESTON, VIRGINIA 22092  
A FOLDER DESCRIBING TOPOGRAPHIC MAPS AND SYMBOLS IS AVAILABLE ON REQUEST

USGS  
Historical File  
Topographic Division

RED TOP, MONT.  
N4722.5—W10445.7.5  
1972

AMS 5078 IV NE—SERIES V884

2660 APR 8 1975