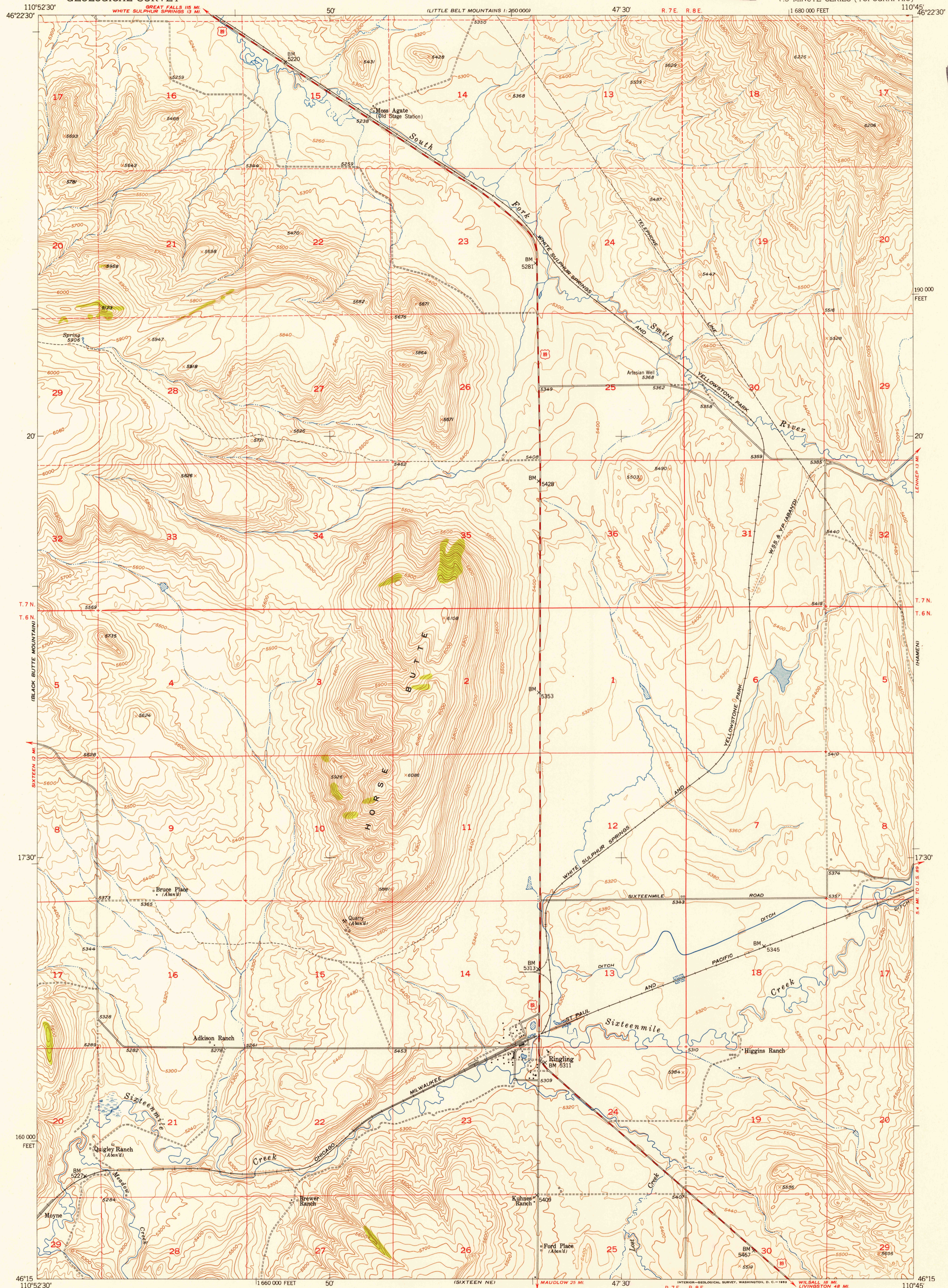


UNITED STATES
DEPARTMENT OF THE INTERIOR
GEOLOGICAL SURVEY

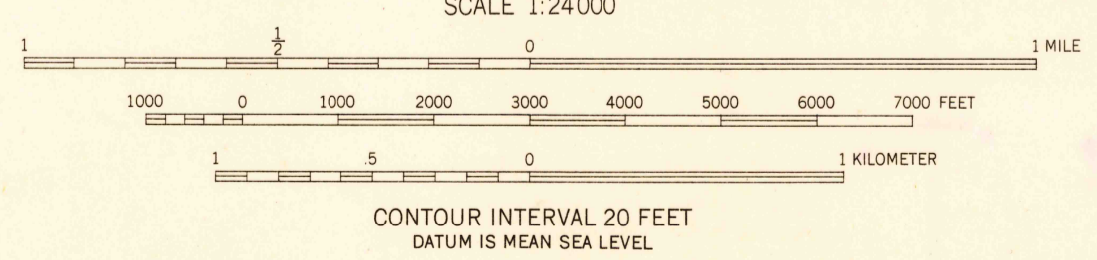
U.S.G.S.
FILE COPY
Inspection and Editing

RINGLING QUADRANGLE
MONTANA-MEAGHER CO.
7.5 MINUTE SERIES (TOPOGRAPHIC)



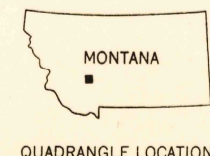
U.S.G.S.
FILE COPY
Inspection and Editing

Mapped by the Geological Survey and the Bureau of Reclamation
Field examination and publication by the Geological Survey
as part of the Department of the Interior program
for the development of the Missouri River Basin
Control by USGS and USC&GS
Topography from aerial photographs by Stereophotogrammetric
methods. Aerial photographs taken 1947
Field check 1948 and 1951
Polyconic projection. 1927 North American datum
10,000-foot grid based on Montana coordinate system,
central zone
Dashed land lines indicate approximate locations



SCALE 1:24,000
CONTOUR INTERVAL 20 FEET
DATUM IS MEAN SEA LEVEL

ROAD CLASSIFICATION
Heavy-duty 4 LANE 6 LANE Light-duty
Medium-duty 4 LANE 6 LANE Unimproved dirt
U.S. Route State Route



QUADRANGLE LOCATION

RINGLING, MONT.
N4615-W11045/7.5

U.S.G.S.
FILE COPY
Inspection and Editing

THIS MAP COMPLIES WITH NATIONAL MAP ACCURACY STANDARDS
FOR SALE BY U. S. GEOLOGICAL SURVEY, FEDERAL CENTER, DENVER, COLORADO OR WASHINGTON 25, D. C.
A FOLDER DESCRIBING TOPOGRAPHIC MAPS AND SYMBOLS IS AVAILABLE ON REQUEST

1951

MAR 10 1953