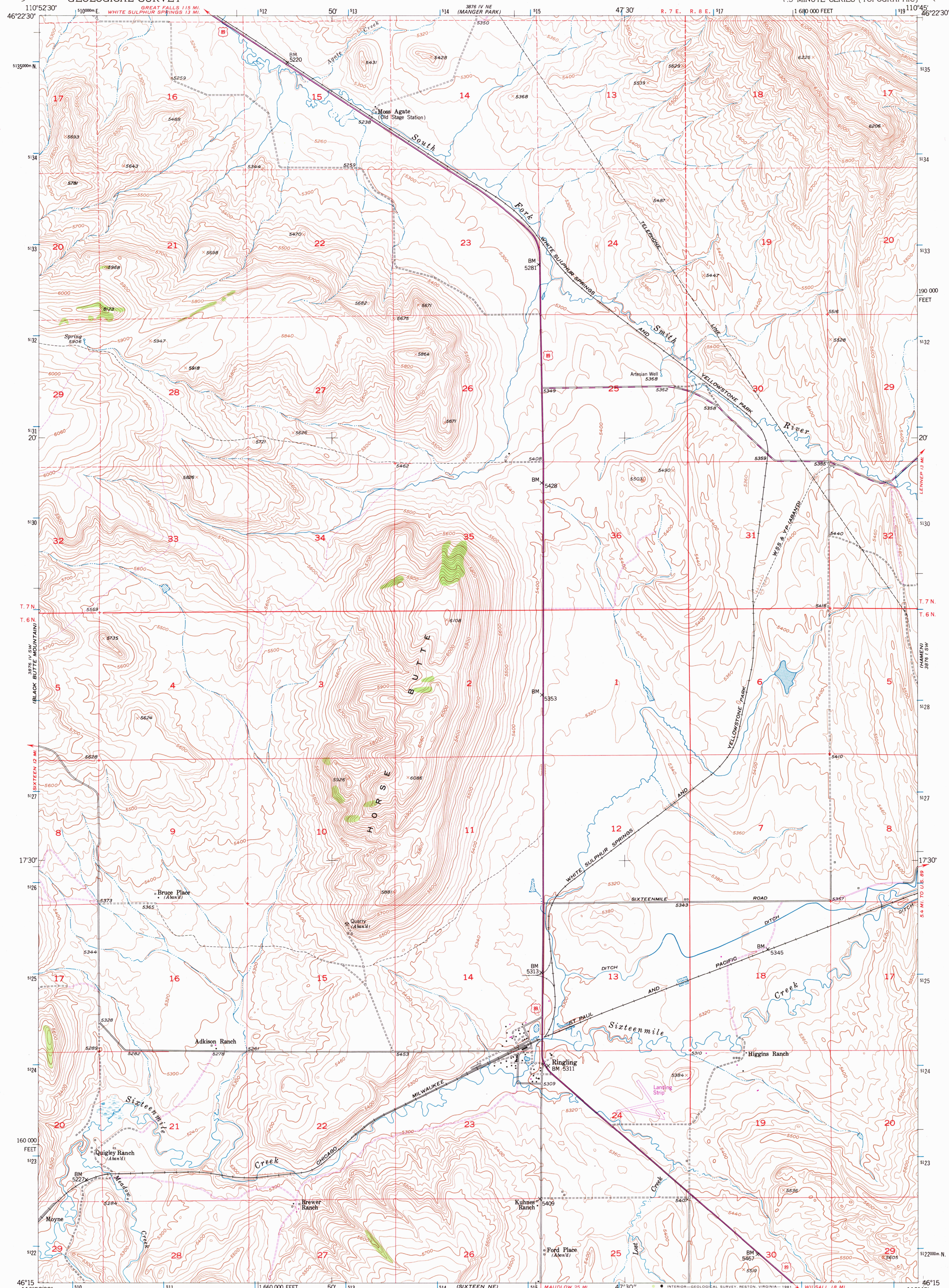
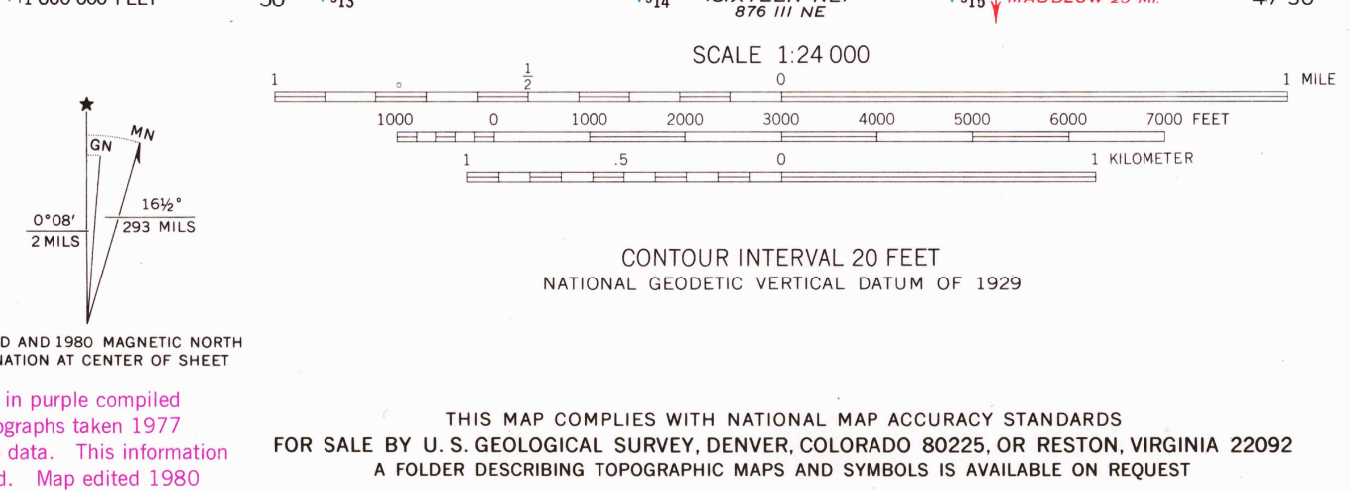


UNITED STATES
DEPARTMENT OF THE INTERIOR
GEOLOGICAL SURVEY

RINGLING QUADRANGLE
MONTANA-MEAGHER CO
7.5 MINUTE SERIES (TOPOGRAPHIC)



Mapped by the Geological Survey and the Bureau of Reclamation
Field examination and publication by the Geological Survey
as part of the Department of the Interior program
for the development of the Missouri River Basin
Control by USGS and NOS/NOAA
Topography from aerial photographs by Stereophotogrammetric
methods. Aerial photographs taken 1947
Field check 1948 and 1951
Polyconic projection, 1927 North American datum
10,000-foot grid based on Montana coordinate system,
central zone
Dashed land lines indicate approximate locations
1000-meter Universal Transverse Mercator grid ticks,
zone 12, shown in blue



ROAD CLASSIFICATION
Heavy-duty 4 LANE 6 LANE Light-duty
Medium-duty 4 LANE 6 LANE Unimproved dirt
U. S. Route State Route

QUADRANGLE LOCATION
To place on the predicted North American Datum 1983
move the projection lines 10 meters north and
61 meters east as shown by dashed corner ticks

RINGLING, MONT.
N4615 - W11045/7.5
1951
PHOTOREVISED 1980
DMA 3876 IV SE-SERIES V894

JUN 29 1981
2100
USGS
HISTORICAL FILE
NATIONAL MAPPING DIVISION