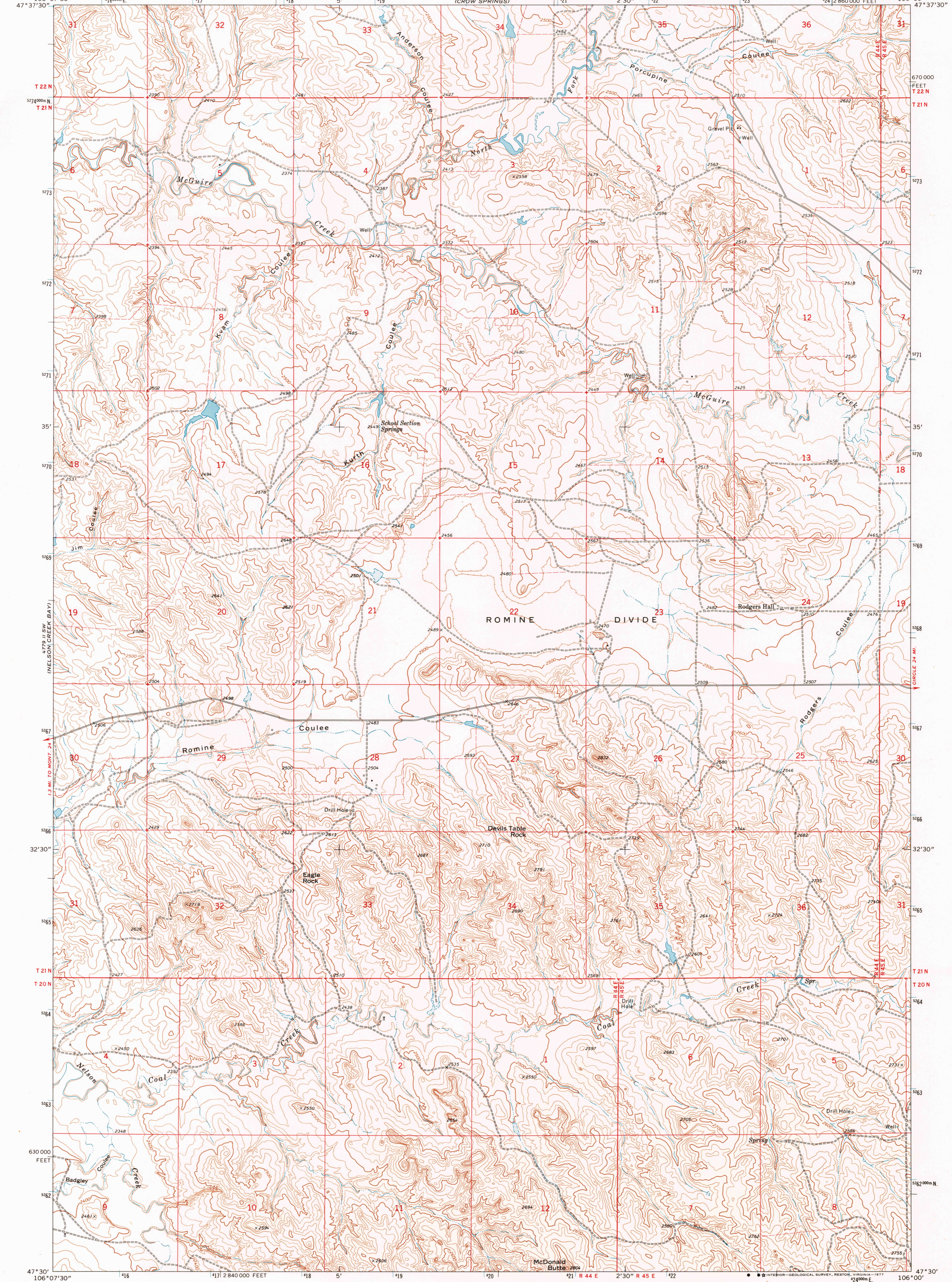


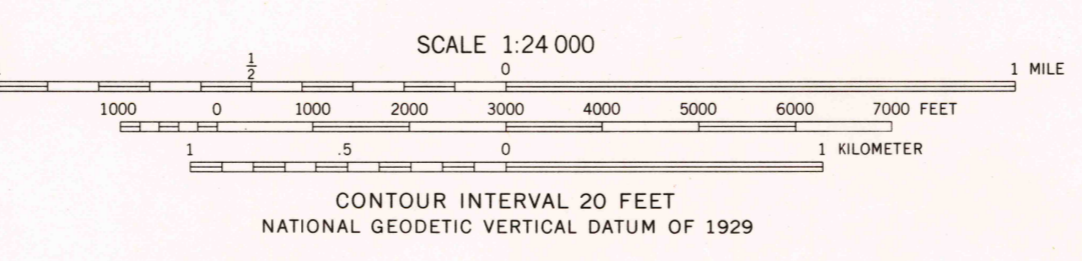
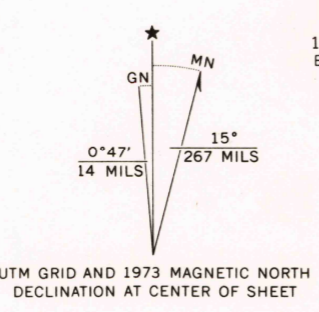
57911 NW
(BADLEY CREEK)

UNITED STATES
DEPARTMENT OF THE INTERIOR
GEOLOGICAL SURVEY

RODGERS HALL QUADRANGLE
MONTANA—MC CONE CO.
7.5 MINUTE SERIES (TOPOGRAPHIC)



Mapped, edited, and published by the Geological Survey as part of the Department of the Interior program for the development of the Missouri River Basin Control by USGS and NOS/NOAA
Topography by photogrammetric methods from aerial photographs taken 1972. Field checked 1973
Projection and 10,000-foot grid ticks: Montana coordinate system, central zone (Lambert conformal conic)
1000-meter Universal Transverse Mercator grid ticks, zone 13, shown in blue. 1927 North American datum
Fine red dashed lines indicate selected fence lines



ROAD CLASSIFICATION
Primary highway, hard surface
Secondary highway, hard surface
Light-duty road, hard or improved surface
Unimproved road
Interstate Route
U. S. Route
State Route

RODGERS HALL, MONT.
N4730—W10600/7.5
1973

THIS MAP COMPLIES WITH NATIONAL MAP ACCURACY STANDARDS FOR SALE BY U. S. GEOLOGICAL SURVEY, DENVER, COLORADO 80225, OR RESTON, VIRGINIA 22092 A FOLDER DESCRIBING TOPOGRAPHIC MAPS AND SYMBOLS IS AVAILABLE ON REQUEST

U.S.G.S. Historical File Topographic Division
AMS 4779 II SE—SERIES V894

2630
NOV 21 1977