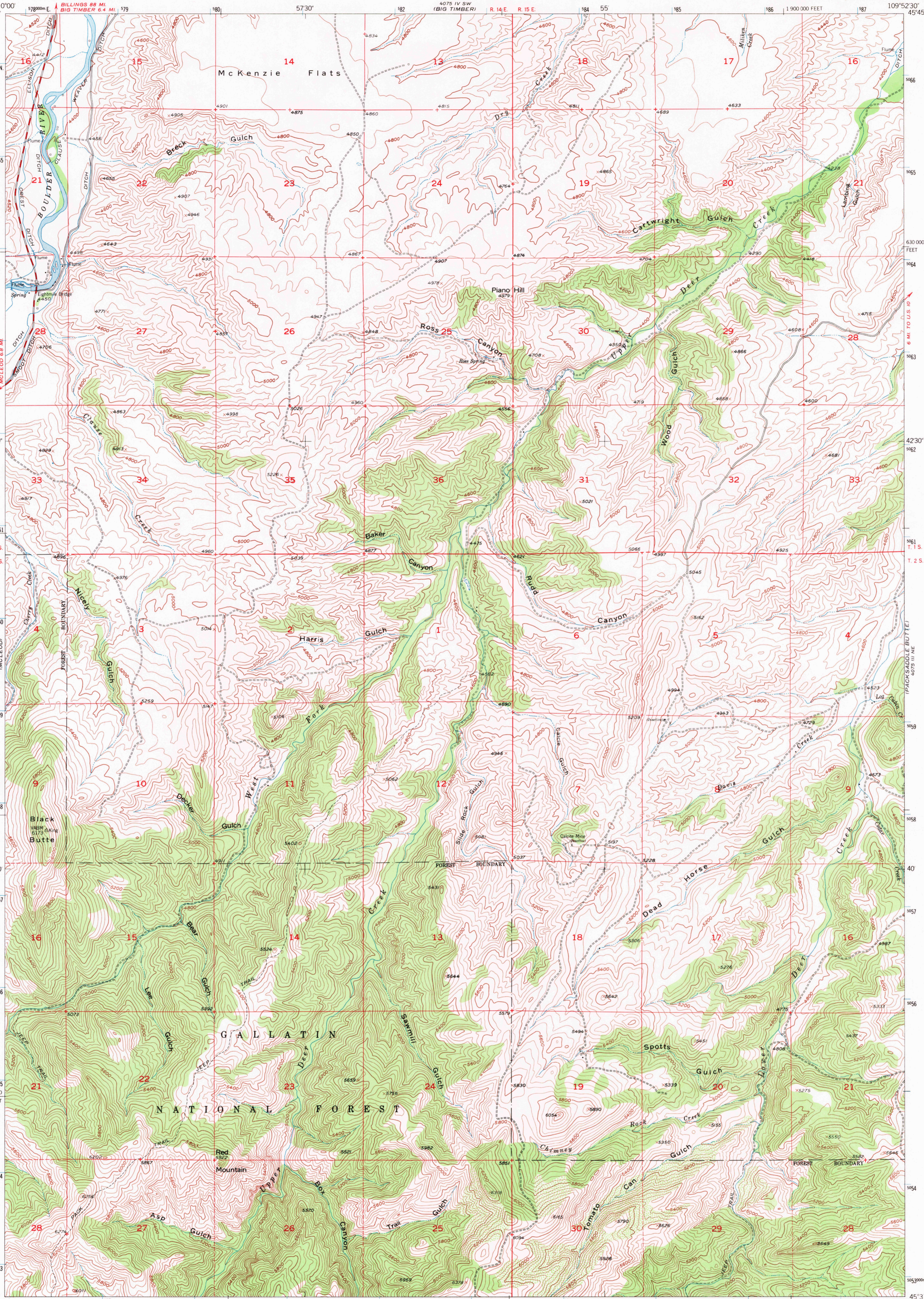


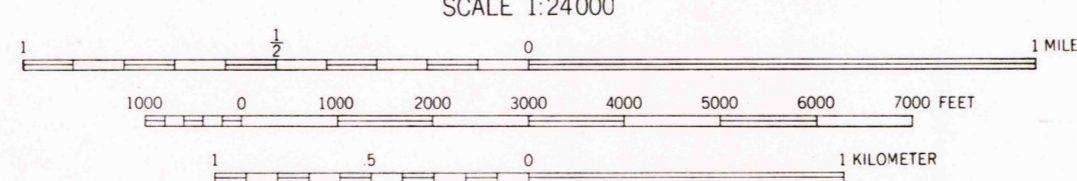
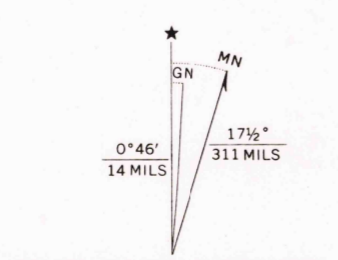
45°45' 110°00' 45°45' 42°30' 110°00' 45°37'30'

UNITED STATES DEPARTMENT OF THE INTERIOR GEOLOGICAL SURVEY

ROSS CANYON QUADRANGLE MONTANA-SWEET GRASS CO. 7.5 MINUTE SERIES (TOPOGRAPHIC)



Mapped, edited, and published by the Geological Survey as part of the Department of the Interior program for the development of the Missouri River Basin... Control by USGS and USC&GS... Topography from aerial photographs by multiplex methods by Tennessee Valley Authority... Aerial photographs taken 1951. Field check 1954... Polyconic projection. 1927 North American datum 10,000-foot grid based on Montana coordinate system, south zone... Dashed land lines indicate approximate locations 1000-meter Universal Transverse Mercator grid ticks, zone 12, shown in blue



SCALE 1:24000... CONTOUR INTERVAL 40 FEET DATUM IS MEAN SEA LEVEL... THIS MAP COMPLIES WITH NATIONAL MAP ACCURACY STANDARDS FOR SALE BY U.S. GEOLOGICAL SURVEY, DENVER, COLORADO 80225, OR WASHINGTON, D.C. 20242 A FOLDER DESCRIBING TOPOGRAPHIC MAPS AND SYMBOLS IS AVAILABLE ON REQUEST

ROAD CLASSIFICATION table with symbols for Heavy-duty, Medium-duty, Light-duty, and Unimproved dirt roads, as well as U.S. and State Routes.

ROSS CANYON, MONT. N4537.5-W10952.5/7.5 1954

USGS Historical File Topographic Division U.S.G.S. FILE COPY TOPOGRAPHIC DIVISION 1715 MAY 18 1971