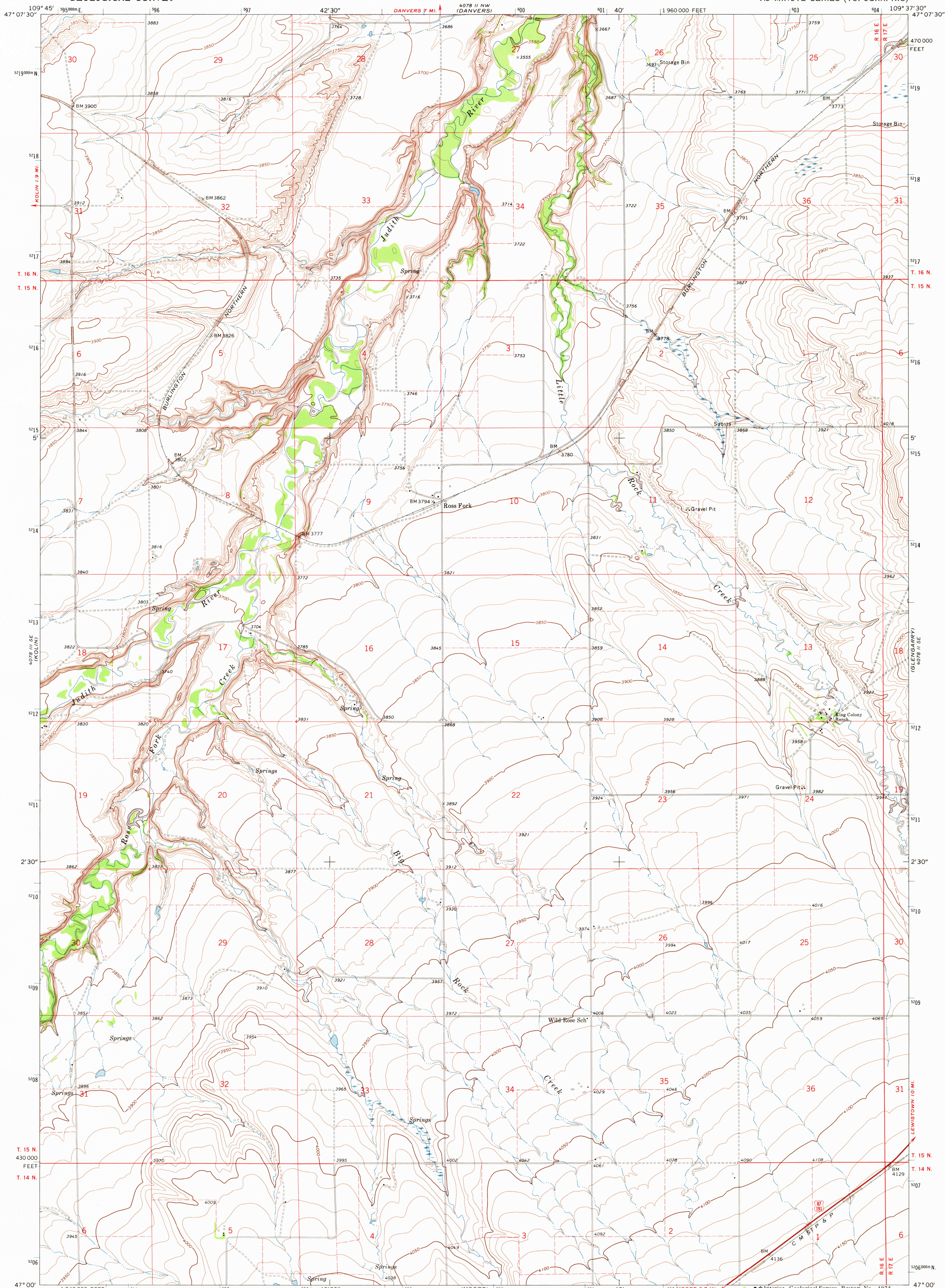


UNITED STATES  
DEPARTMENT OF THE INTERIOR  
GEOLOGICAL SURVEY

ROSS FORK QUADRANGLE  
MONTANA—FERGUS CO.  
7.5 MINUTE SERIES (TOPOGRAPHIC)



Mapped, edited, and published by the Geological Survey

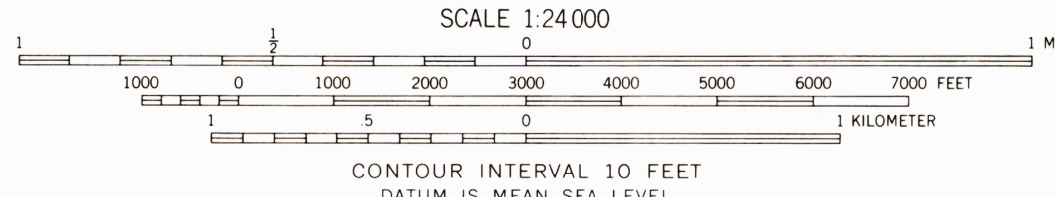
Control by USGS and USC&GS

Topography by photogrammetric methods from aerial  
photographs taken 1968. Field checked 1970

Polyconic projection. 1927 North American datum  
10,000-foot grid based on Montana coordinate system,  
central zone

1000-meter Universal Transverse Mercator grid ticks,  
zone 12, shown in blue

Fine red dashed lines indicate selected fence lines



| ROAD CLASSIFICATION                |                                              |
|------------------------------------|----------------------------------------------|
| Primary highway,<br>hard surface   | Light-duty road, hard<br>or improved surface |
| Secondary highway,<br>hard surface | Unimproved road                              |
| Interstate Route                   | U. S. Route                                  |
|                                    | State Route                                  |



QUADRANGLE LOCATION

ROSS FORK, MONT.

N4700—W10937.5/7.5

1970

AMS 4078 II SW—SERIES V894

THIS MAP COMPLIES WITH NATIONAL MAP ACCURACY STANDARDS  
FOR SALE BY U.S. GEOLOGICAL SURVEY, DENVER, COLORADO 80225, OR RESTON, VIRGINIA 22092  
A FOLDER DESCRIBING TOPOGRAPHIC MAPS AND SYMBOLS IS AVAILABLE ON REQUEST

USGS  
HISTORICAL FILE  
TOPOGRAPHIC DIVISION

OCT 15 1970