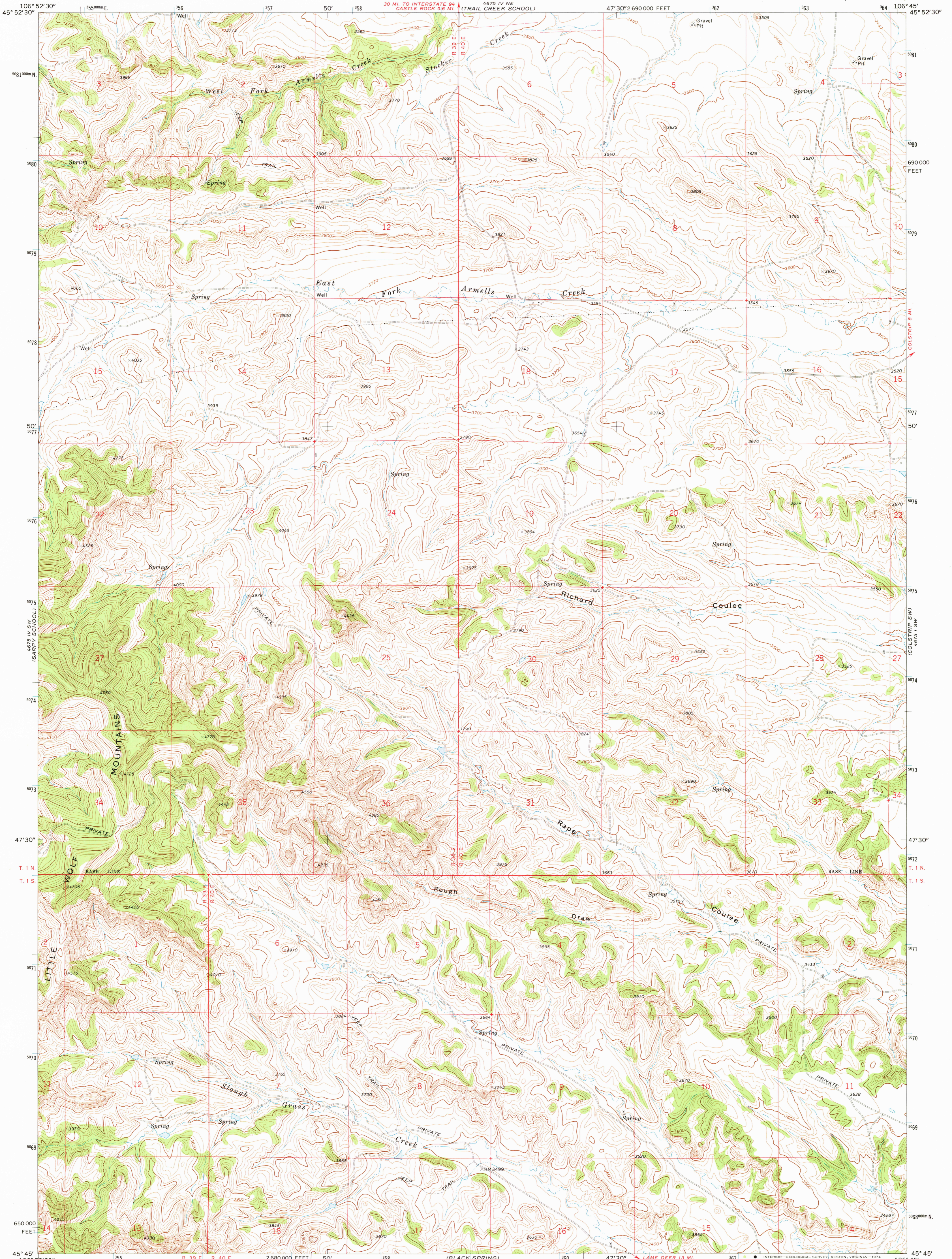


UNITED STATES
DEPARTMENT OF THE INTERIOR
GEOLOGICAL SURVEY

ROUGH DRAW QUADRANGLE
MONTANA—ROSEBUD CO.
7.5 MINUTE SERIES (TOPOGRAPHIC)



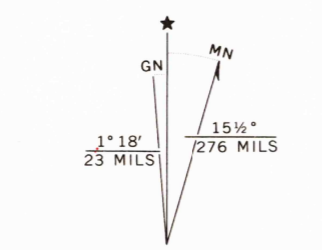
Mapped, edited, and published by the Geological Survey

Control by USGS and USC&GS

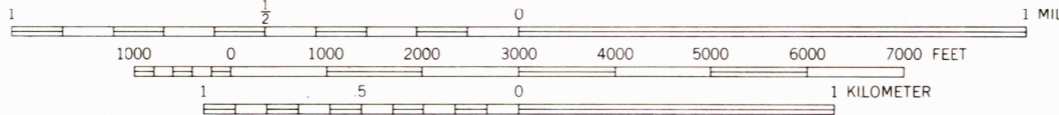
Topography by photogrammetric methods from aerial photographs taken 1970. Field checked 1971

Projection and 10,000-foot grid ticks: Montana coordinate system, south zone (Lambert conformal conic) 1000-meter Universal Transverse Mercator grid ticks, zone 13, shown in blue. 1927 North American datum

Fine red dashed lines indicate selected fence lines



UTM GRID AND 1971 MAGNETIC NORTH DECLINATION AT CENTER OF SHEET



CONTOUR INTERVAL 20 FEET

DATUM IS MEAN SEA LEVEL



QUADRANGLE LOCATION

ROAD CLASSIFICATION	
Primary highway, hard surface	Light-duty road, hard or improved surface
Secondary highway, hard surface	Unimproved road
Interstate Route	U. S. Route
	State Route

USGS
HISTORICAL FILE
TOPOGRAPHIC DIVISION

ROUGH DRAW, MONT.
N4545—W10645/7.5

1971

AMS 4675 IV SE—SERIES V894

THIS MAP COMPLIES WITH NATIONAL MAP ACCURACY STANDARDS
FOR SALE BY U.S. GEOLOGICAL SURVEY, DENVER, COLORADO 80225, OR RESTON, VIRGINIA 22092
A FOLDER DESCRIBING TOPOGRAPHIC MAPS AND SYMBOLS IS AVAILABLE ON REQUEST

2960

AUG 26 1974