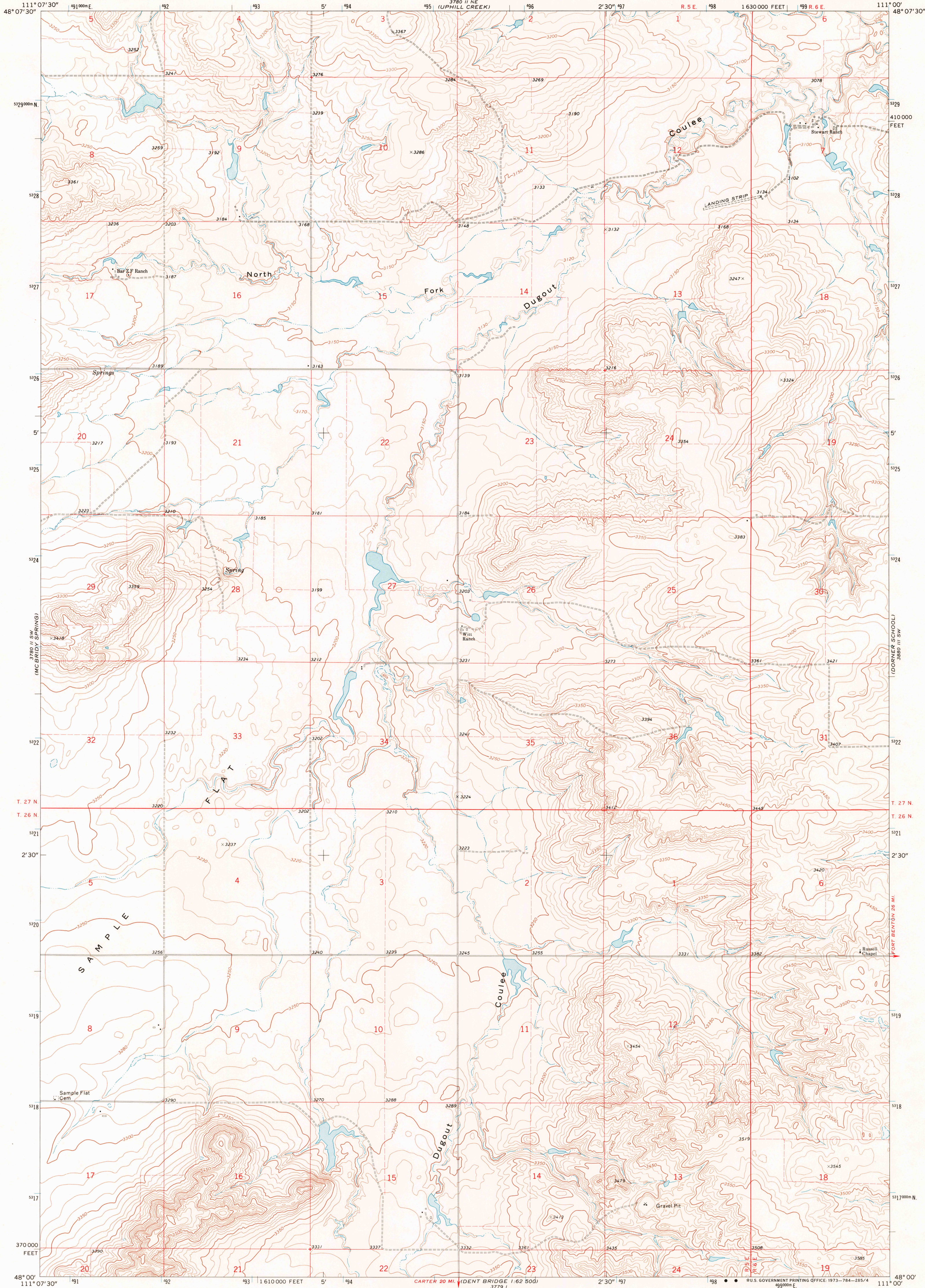
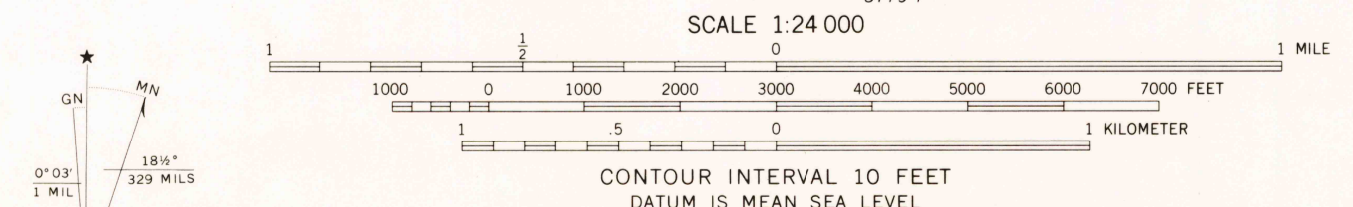


UNITED STATES
DEPARTMENT OF THE INTERIOR
GEOLOGICAL SURVEY

RUSSELL CHAPEL QUADRANGLE
MONTANA—CHOUTEAU CO.
7.5 MINUTE SERIES (TOPOGRAPHIC)



Mapped, edited, and published by the Geological Survey as part of the Department of the Interior program for the development of the Missouri River Basin Control by USGS and USC&GS
Topography by photogrammetric methods from aerial photographs taken 1969. Field checked 1970
Polyconic projection. 1927 North American datum 10,000-foot grid based on Montana coordinate system, north zone
1000-meter Universal Transverse Mercator grid ticks, zone 12, shown in blue
Fine red dashed lines indicate selected fence lines



ROAD CLASSIFICATION
 Primary highway, hard surface: solid red line
 Light-duty road, hard or improved surface: dashed red line
 Secondary highway, hard surface: solid black line
 Unimproved road: dashed black line
 Interstate Route: red circle with 'I'
 U. S. Route: red circle with 'U.S.'
 State Route: red circle with 'S.R.'
 Historical File Topographic Division



AUG 24 1973
RUSSELL CHAPEL, MONT.
 N4800—W11100/7.5
 1970
 AMS 3780 II SE—SERIES V894

THIS MAP COMPLIES WITH NATIONAL MAP ACCURACY STANDARDS
 FOR SALE BY U. S. GEOLOGICAL SURVEY, DENVER, COLORADO 80225, OR WASHINGTON, D. C. 20242
 A FOLDER DESCRIBING TOPOGRAPHIC MAPS AND SYMBOLS IS AVAILABLE ON REQUEST

Dunham
 2500
 50 plane