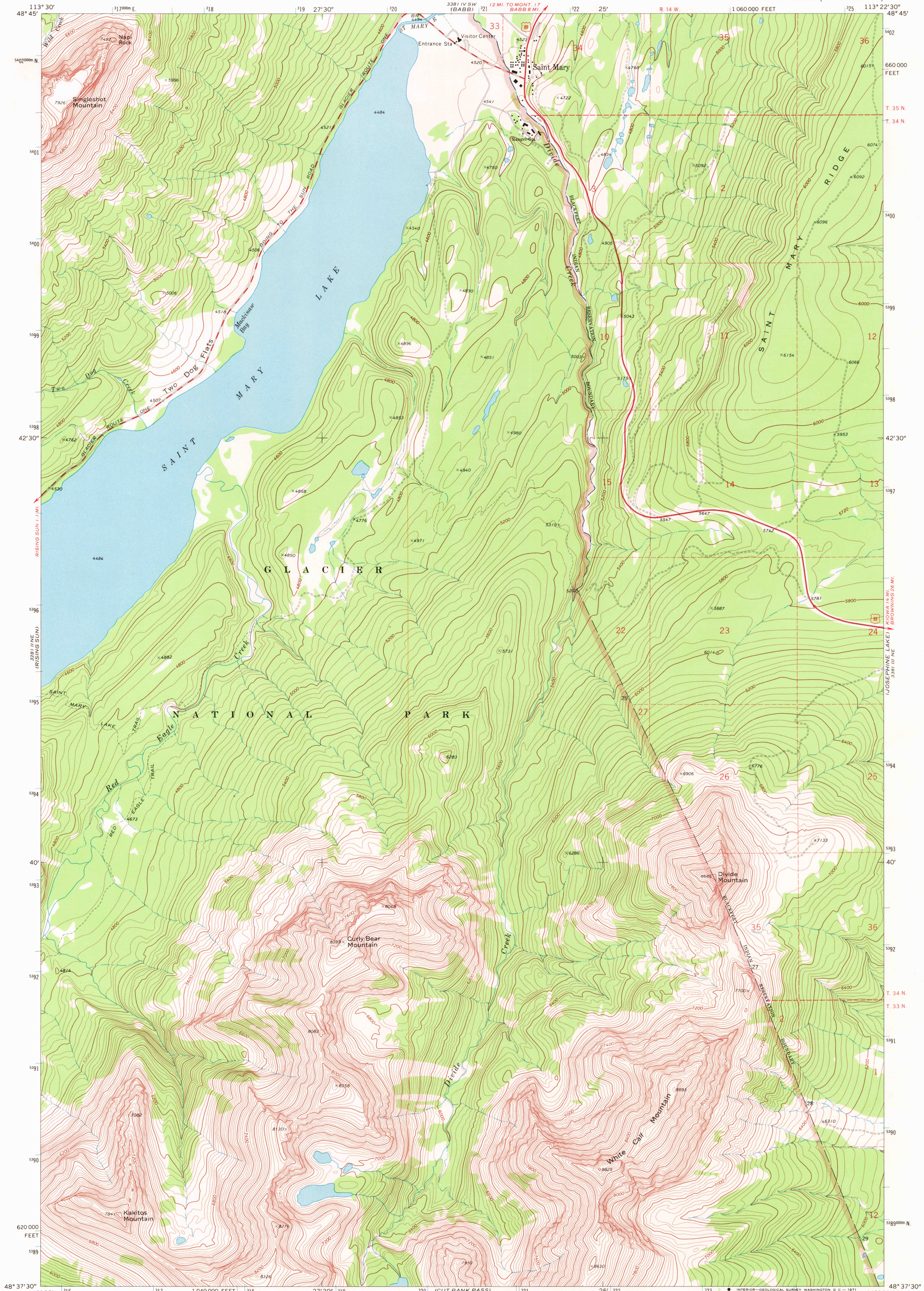
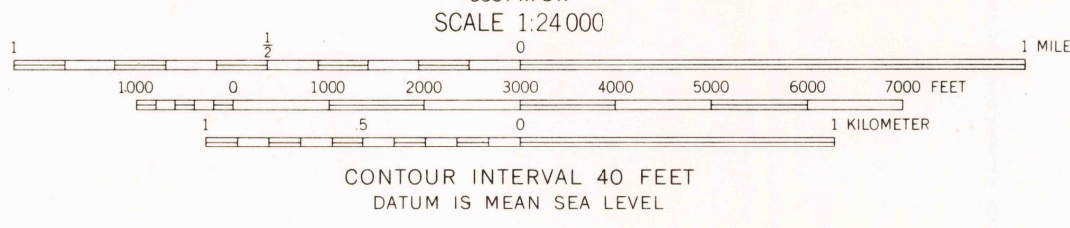


UNITED STATES  
DEPARTMENT OF THE INTERIOR  
GEOLOGICAL SURVEY

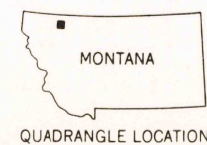
SAINT MARY QUADRANGLE  
MONTANA—GLACIER CO.  
7.5 MINUTE SERIES (TOPOGRAPHIC)



Mapped, edited, and published by the Geological Survey  
Control by USGS and USC&GS  
Topography by photogrammetric methods from aerial  
photographs taken 1966. Field checked 1968  
Polyconic projection. 1927 North American datum  
10,000-foot grid based on Montana coordinate system,  
north zone  
1000-meter Universal Transverse Mercator grid ticks,  
zone 12, shown in blue  
Where omitted, land lines have not been established



ROAD CLASSIFICATION  
Primary highway, all weather, hard surface  
Secondary highway, all weather, hard surface  
Light-duty road, all weather, improved surface  
Unimproved road, fair or dry weather  
U. S. Route



SAINT MARY, MONT.  
N4837.5—W11322.5/7.5  
1968

USGS  
HISTORICAL FILE  
TOPOGRAPHIC DIVISION

THIS MAP COMPLIES WITH NATIONAL MAP ACCURACY STANDARDS  
FOR SALE BY U. S. GEOLOGICAL SURVEY, DENVER, COLORADO 80225, OR WASHINGTON, D. C. 20242  
A FOLDER DESCRIBING TOPOGRAPHIC MAPS AND SYMBOLS IS AVAILABLE ON REQUEST

AMS 3381 III NW—SERIES V894

OCT 4 1971