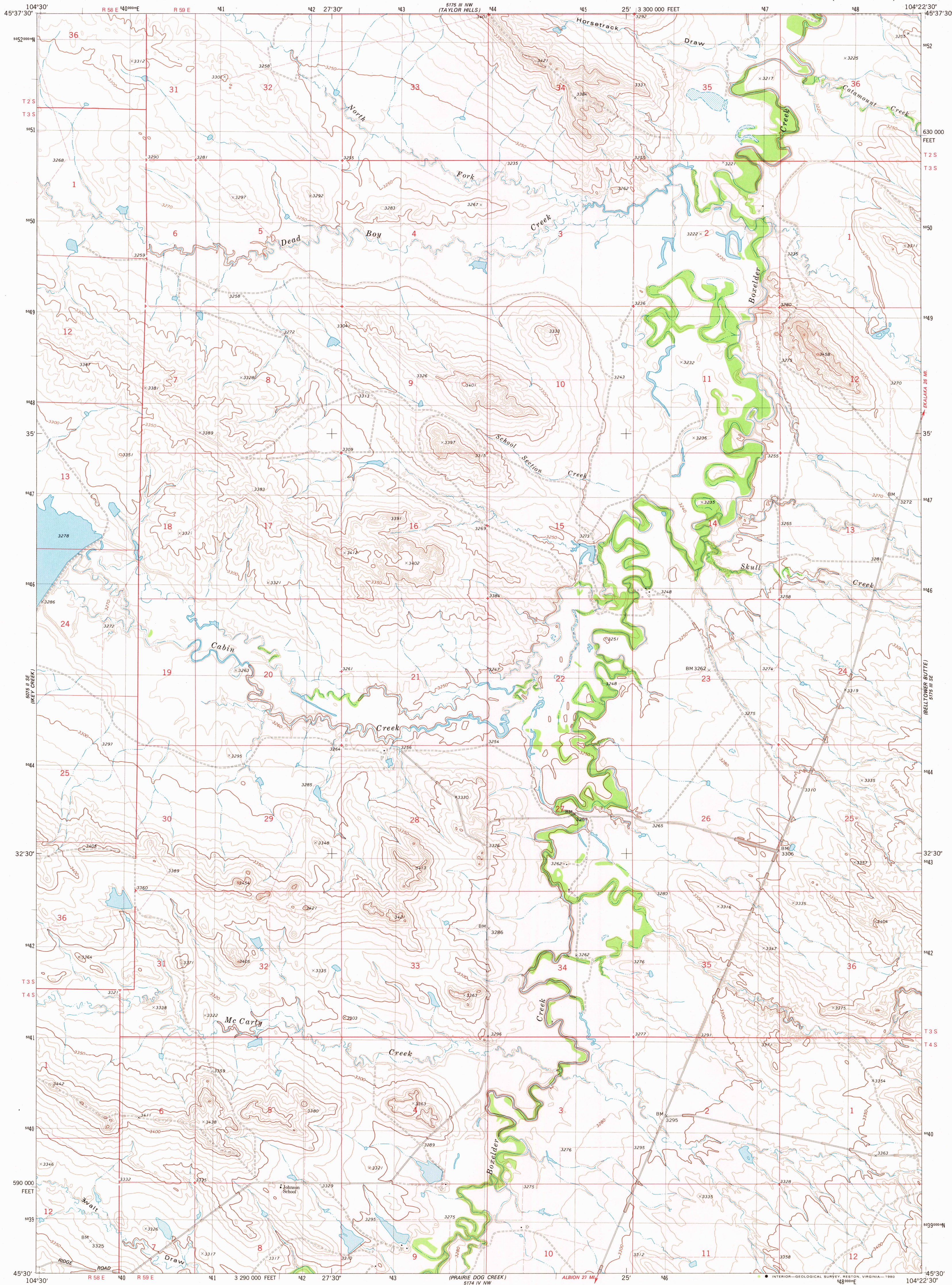
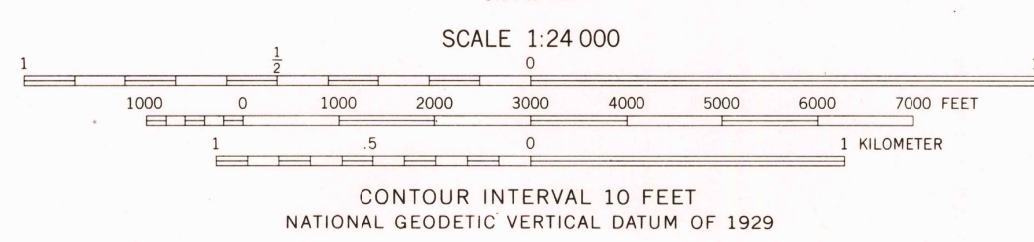
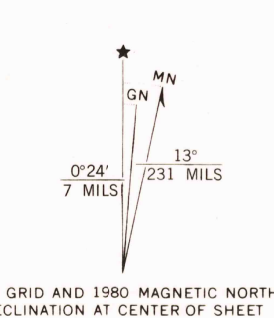


UNITED STATES
DEPARTMENT OF THE INTERIOR
GEOLOGICAL SURVEY

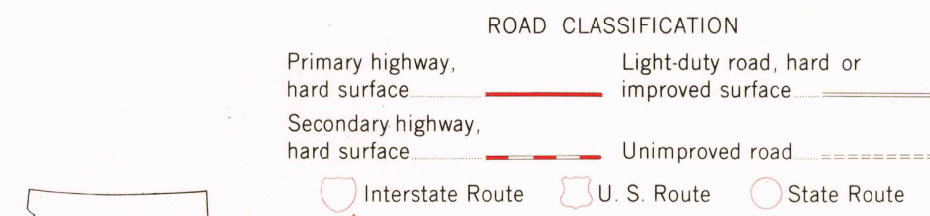
SCHOOL SECTION CREEK QUADRANGLE
MONTANA—CARTER CO.
7.5 MINUTE SERIES (TOPOGRAPHIC)



Mapped, edited, and published by the Geological Survey
Control by USGS and NOS/NOAA
Topography by photogrammetric methods from aerial photographs
taken 1972. Field checked 1974. Map edited 1980
Projection and 10,000-foot grid ticks: Montana
coordinate system, south zone (Lambert conformal conic)
1000-meter Universal Transverse Mercator grid, zone 13
1927 North American datum
To place on the predicted North American Datum 1983
move the projection lines 4 meters north and
41 meters east as shown by dashed corner ticks
Fine red dashed lines indicate selected fence lines



THIS MAP COMPLIES WITH NATIONAL MAP ACCURACY STANDARDS
FOR SALE BY U. S. GEOLOGICAL SURVEY, DENVER, COLORADO 80225, OR RESTON, VIRGINIA 22092
A FOLDER DESCRIBING TOPOGRAPHIC MAPS AND SYMBOLS IS AVAILABLE ON REQUEST



SCHOOL SECTION CREEK, MONT.
N4530-W10422.5/7.5

1980
DMA 5175 III SW-SERIES V894

DEC 22 1980

1950