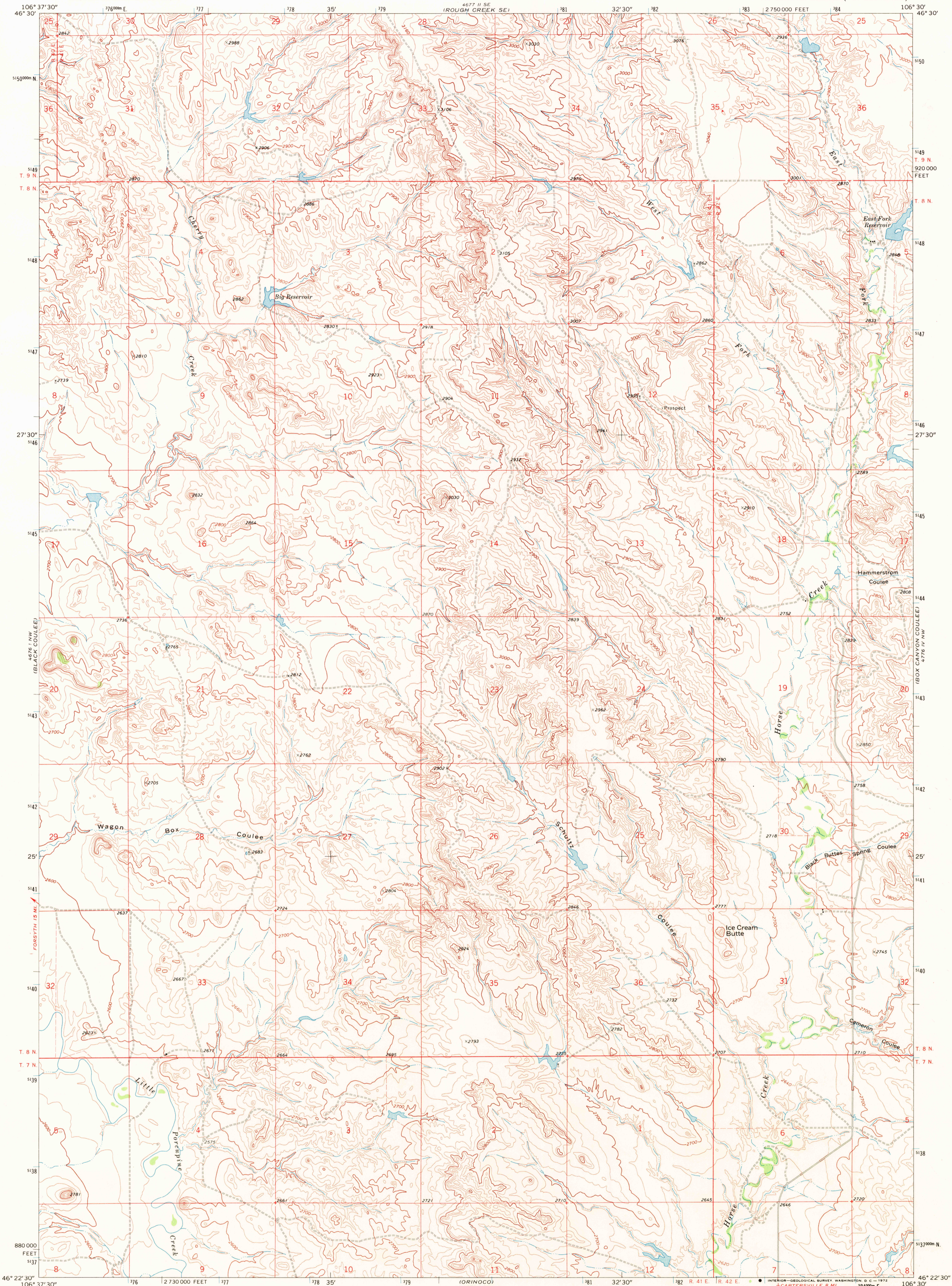
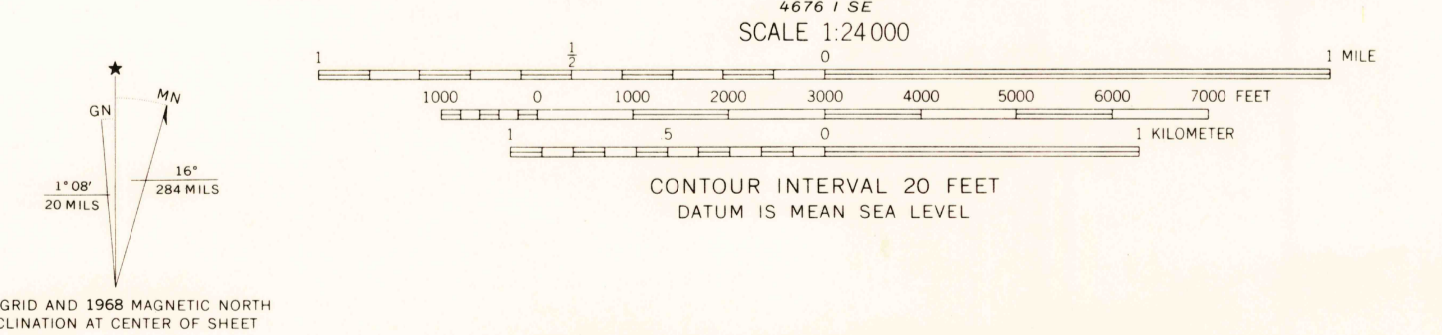


UNITED STATES
DEPARTMENT OF THE INTERIOR
GEOLOGICAL SURVEY

SCHULTZ COULEE QUADRANGLE
MONTANA—ROSEBUD CO.
7.5 MINUTE SERIES (TOPOGRAPHIC)



Mapped, edited, and published by the Geological Survey
Control by USGS and USC&GS
Topography by photogrammetric methods from aerial
photographs taken 1966. Field checked 1968
Polyconic projection. 1927 North American datum
10,000-foot grid based on Montana coordinate system,
south zone
1000-meter Universal Transverse Mercator grid ticks,
zone 13, shown in blue
Fine red dashed lines indicate selected fence lines



ROAD CLASSIFICATION
Light-duty road, all weather, Unimproved road, fair or dry weather
improved surface weather

QUADRANGLE LOCATION

MONTANA

SCHULTZ COULEE, MONT.
N4622.5—W10630.7.5
1968

USGS
HISTORICAL FILE
TOPOGRAPHIC DIVISION
3220
MAY 19 1972