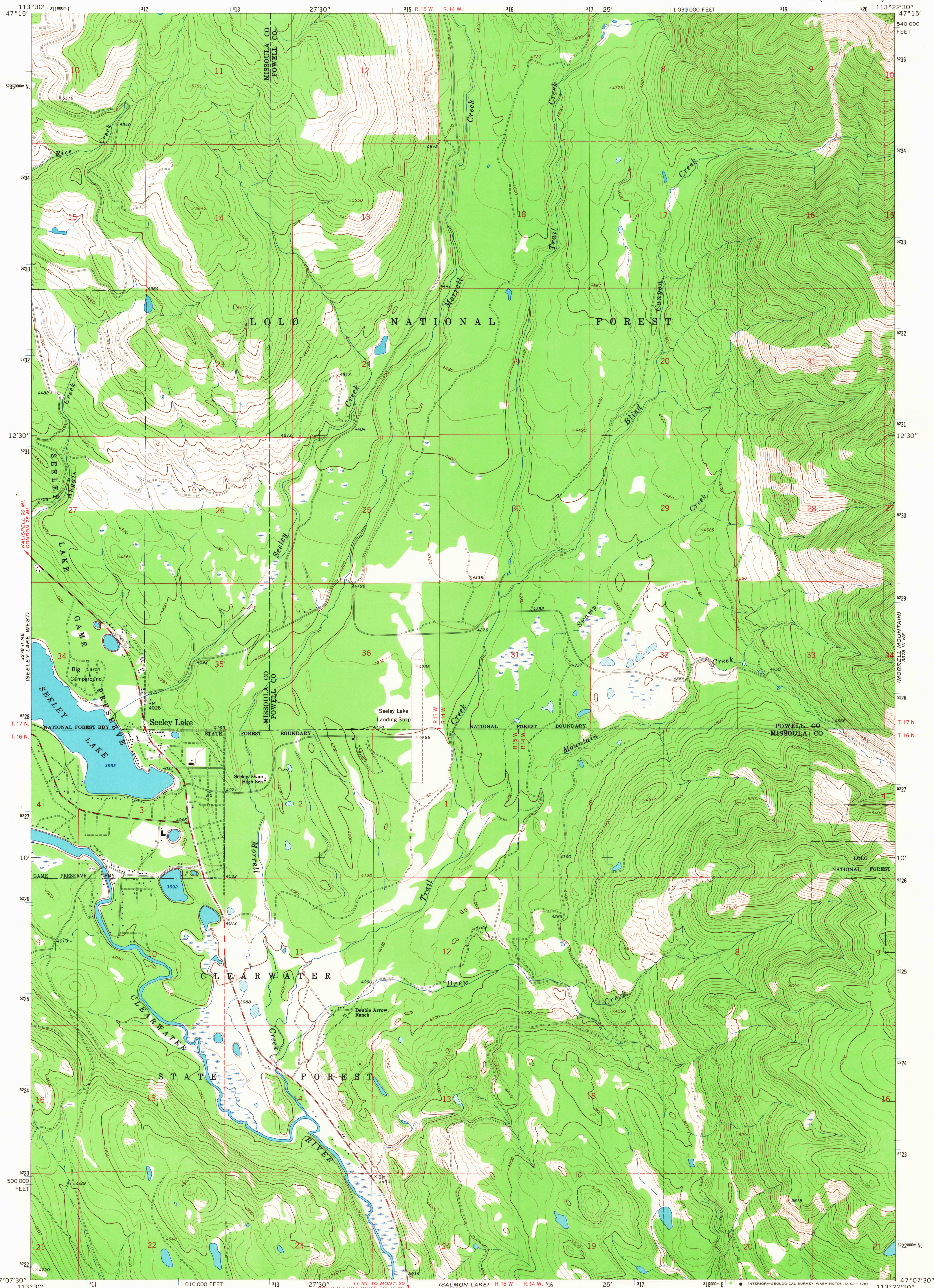
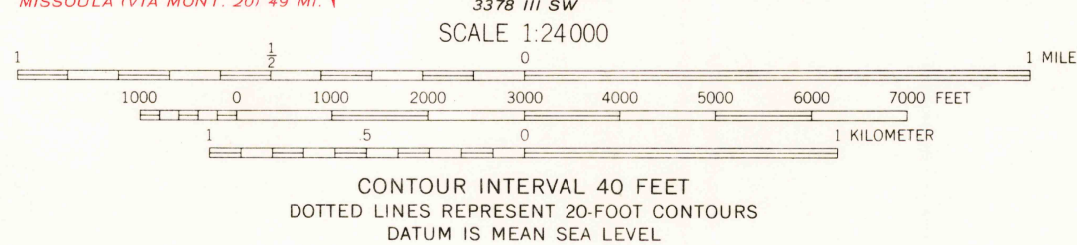


UNITED STATES
DEPARTMENT OF THE INTERIOR
GEOLOGICAL SURVEY

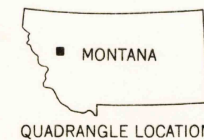
SEELEY LAKE EAST QUADRANGLE
MONTANA
7.5 MINUTE SERIES (TOPOGRAPHIC)



Maped, edited, and published by the Geological Survey
Control by USGS and USC&GS
Topography by photogrammetric methods from aerial
photographs taken 1964. Field checked 1965
Polyconic projection. 1927 North American datum
10,000-foot grid based on Montana coordinate system,
central zone
1000-meter Universal Transverse Mercator grid ticks,
zone 12, shown in blue



ROAD CLASSIFICATION
Medium-duty ——— Light-duty ———
Unimproved dirt ———



SEELEY LAKE EAST, MONT.
N4707.5—W11322.5/7.5

1965

AMS 3378 III NW—SERIES V894

U.S.G.S.
TOPOGRAPHIC DIVISION

USGS
Historical File
Topographic Division

3250
AUG 6 1968