

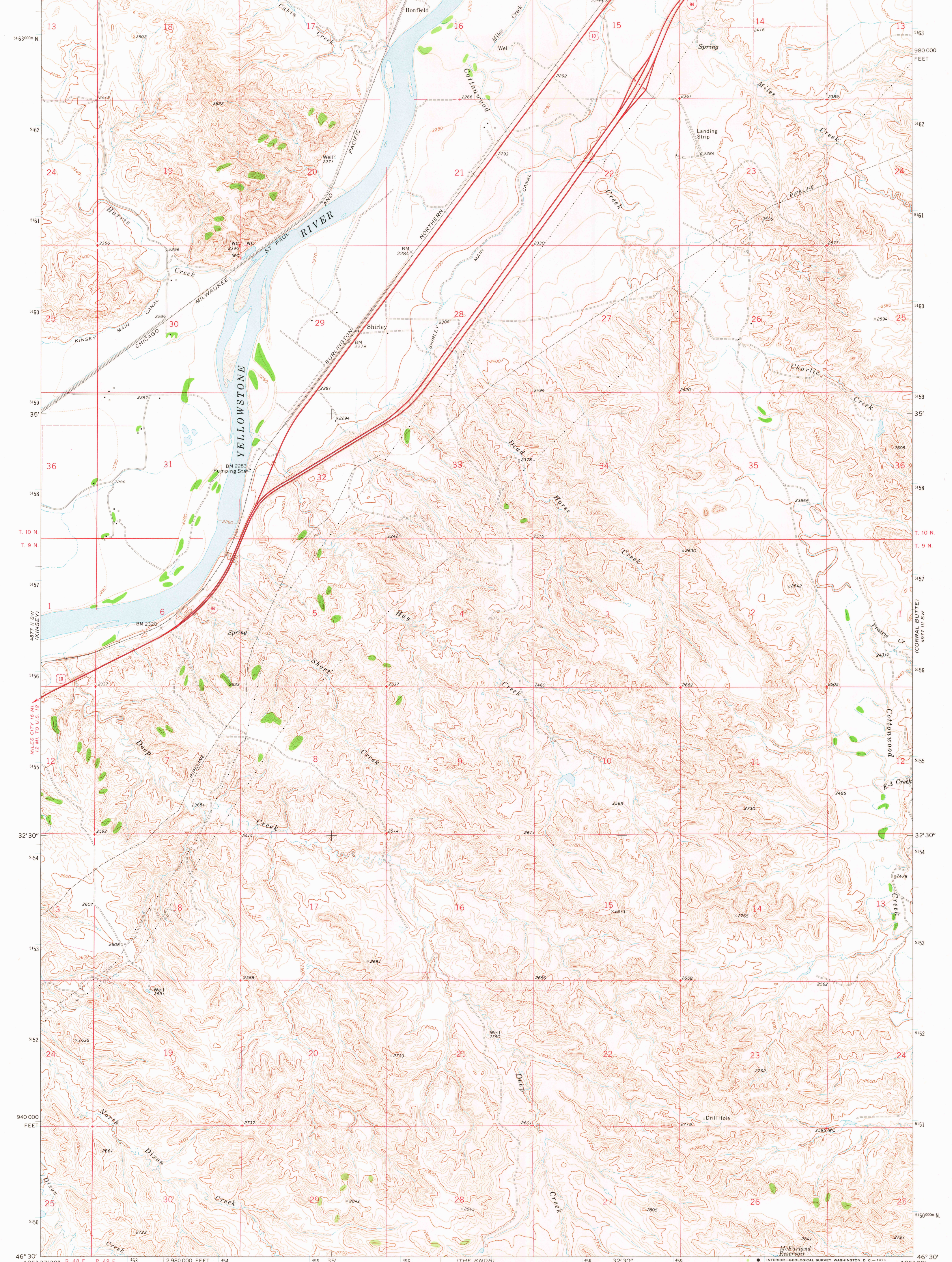
4877 II NW
(KINSEY NW)

UNITED STATES
DEPARTMENT OF THE INTERIOR
GEOLOGICAL SURVEY

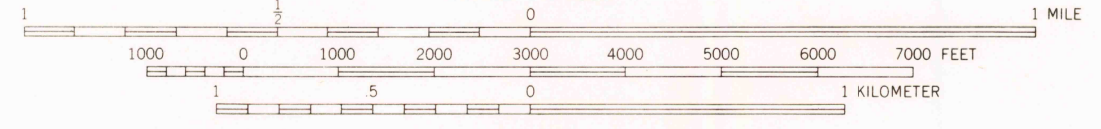
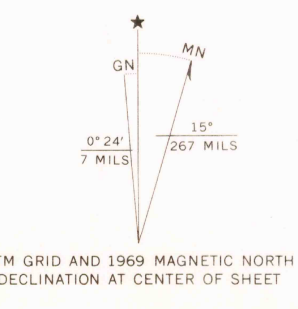
SHIRLEY QUADRANGLE
MONTANA—CUSTER CO.
7.5 MINUTE SERIES (TOPOGRAPHIC)

4977 III NW
(ZERO)

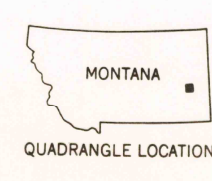
105° 37' 30" R 48 E R 49 E 1540000 E 55 35' 56 4877 II NE (KINSEY NE) 58 ZERO 4 MI 32' 30" 59 GLENDIVE 55 MI TERRY 18 MI 60 3 000 000 FEET 61 105° 30' 46° 37' 30"



Mapped, edited, and published by the Geological Survey
Control by USGS and USC&GS
Topography by photogrammetric methods from aerial photographs taken 1968. Field checked 1969
Polyconic projection. 1927 North American datum
10,000-foot grid based on Montana coordinate system, south zone
1000-meter Universal Transverse Mercator grid ticks, zone 13, shown in blue
Fine red dashed lines indicate selected fence lines



CONTOUR INTERVAL 20 FEET
DOTTED LINES REPRESENT 10-FOOT CONTOURS
DATUM IS MEAN SEA LEVEL



ROAD CLASSIFICATION

Primary highway, hard surface	Light-duty road, hard or improved surface
Secondary highway, hard surface	Unimproved road
Interstate Route	U.S. Route
	State Route

THIS MAP COMPLIES WITH NATIONAL MAP ACCURACY STANDARDS
FOR SALE BY U.S. GEOLOGICAL SURVEY, DENVER, COLORADO 80225, OR WASHINGTON, D.C. 20242
A FOLDER DESCRIBING TOPOGRAPHIC MAPS AND SYMBOLS IS AVAILABLE ON REQUEST

SHIRLEY, MONT.
N4630-W10530/7.5
1969
AMS 4877 II SE—SERIES V894

JAN 8 1 1973
1960
HISTORICAL FILE
TOPOGRAPHIC DIVISION