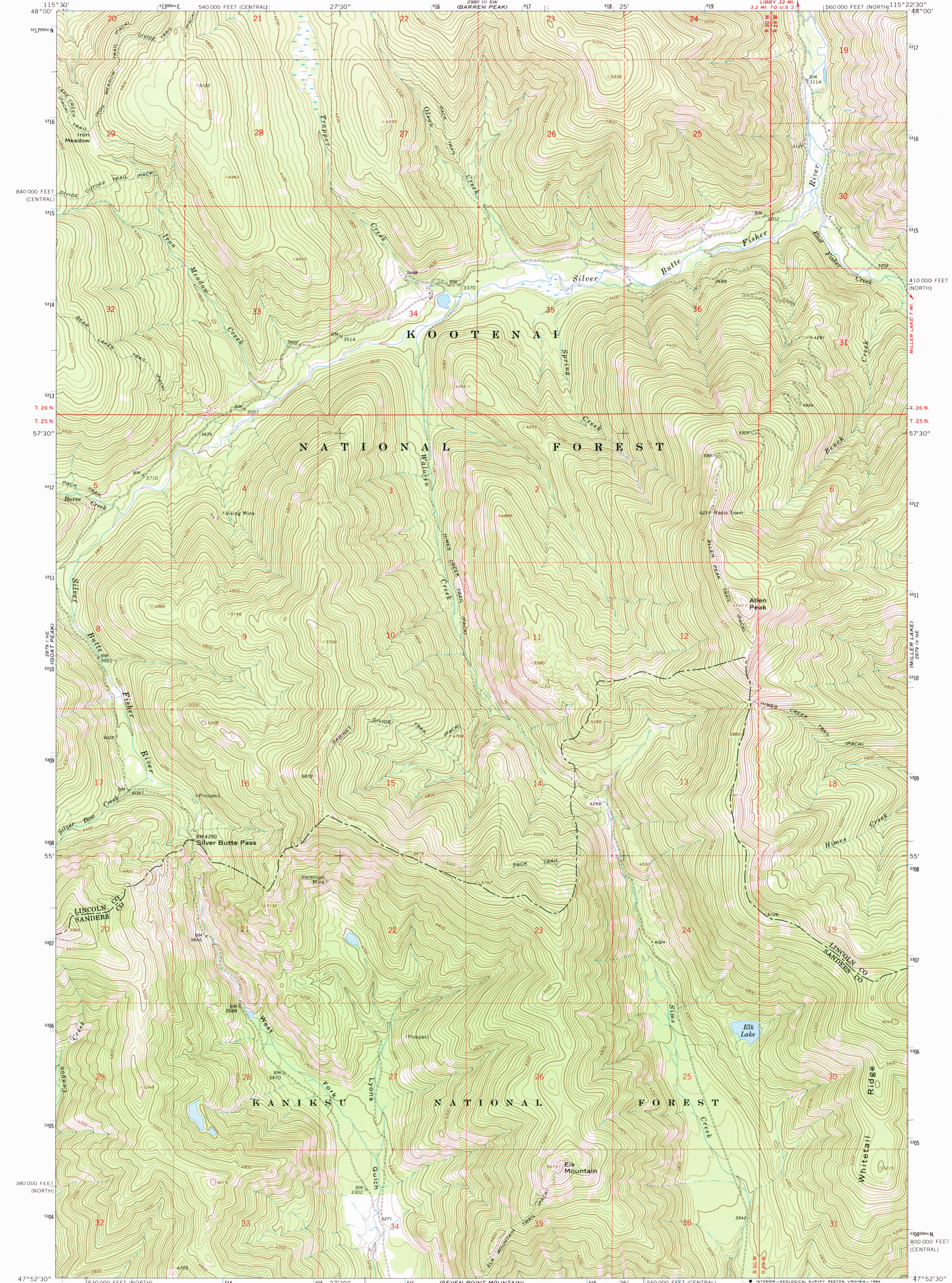
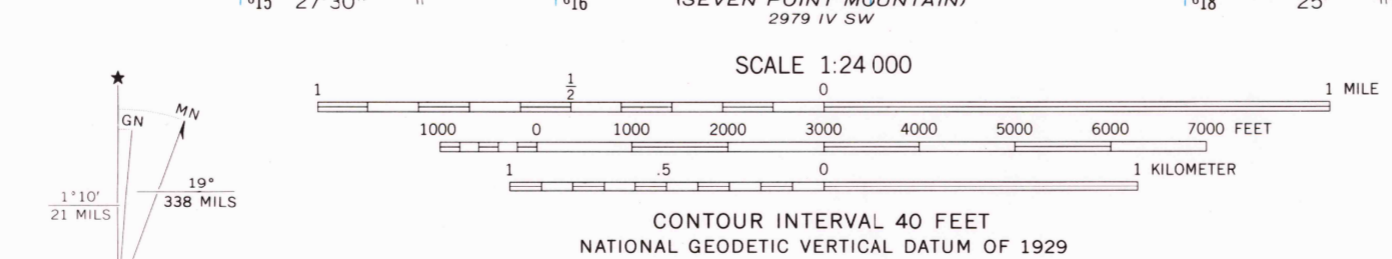


UNITED STATES
DEPARTMENT OF THE INTERIOR
GEOLOGICAL SURVEY

SILVER BUTTE PASS QUADRANGLE
MONTANA
7.5 MINUTE SERIES (TOPOGRAPHIC)



Mapped, edited, and published by the Geological Survey
Control by USGS and NOS/NOAA
Topography by photogrammetric methods from aerial photographs taken 1965. Field checked 1966
Polyconic projection. 1927 North American Datum
10,000-foot grids based on Montana coordinate system, north and central zones
1000-meter Universal Transverse Mercator grid ticks, zone 11, shown in blue
There may be private inholdings within the boundaries of the National or State reservations shown on this map
To place on the predicted North American Datum 1983 move the projection lines 12 meters north and 74 meters east as shown by dashed corner ticks



ROAD CLASSIFICATION
Light duty ———— Unimproved dirt - - - - -
QUADRANGLE LOCATION
MONTANA
SILVER BUTTE PASS, MONT.
47115-H4-TF-024
1966
PHOTOREVISED 1983
DMA 2919 IV NW—SERIES V894
Revisions shown in purple and woodland compiled from aerial photographs taken 1982 and other source data. Partial field check by U.S. Forest Service. Map edited 1983

THIS MAP COMPLIES WITH NATIONAL MAP ACCURACY STANDARDS
FOR SALE BY U. S. GEOLOGICAL SURVEY, DENVER, COLORADO 80225, OR RESTON, VIRGINIA 22092
A FOLDER DESCRIBING TOPOGRAPHIC MAPS AND SYMBOLS IS AVAILABLE ON REQUEST

RETURN TO:
USGS M&D HISTORICAL MAP ARCHIVES

MAR 23 1984