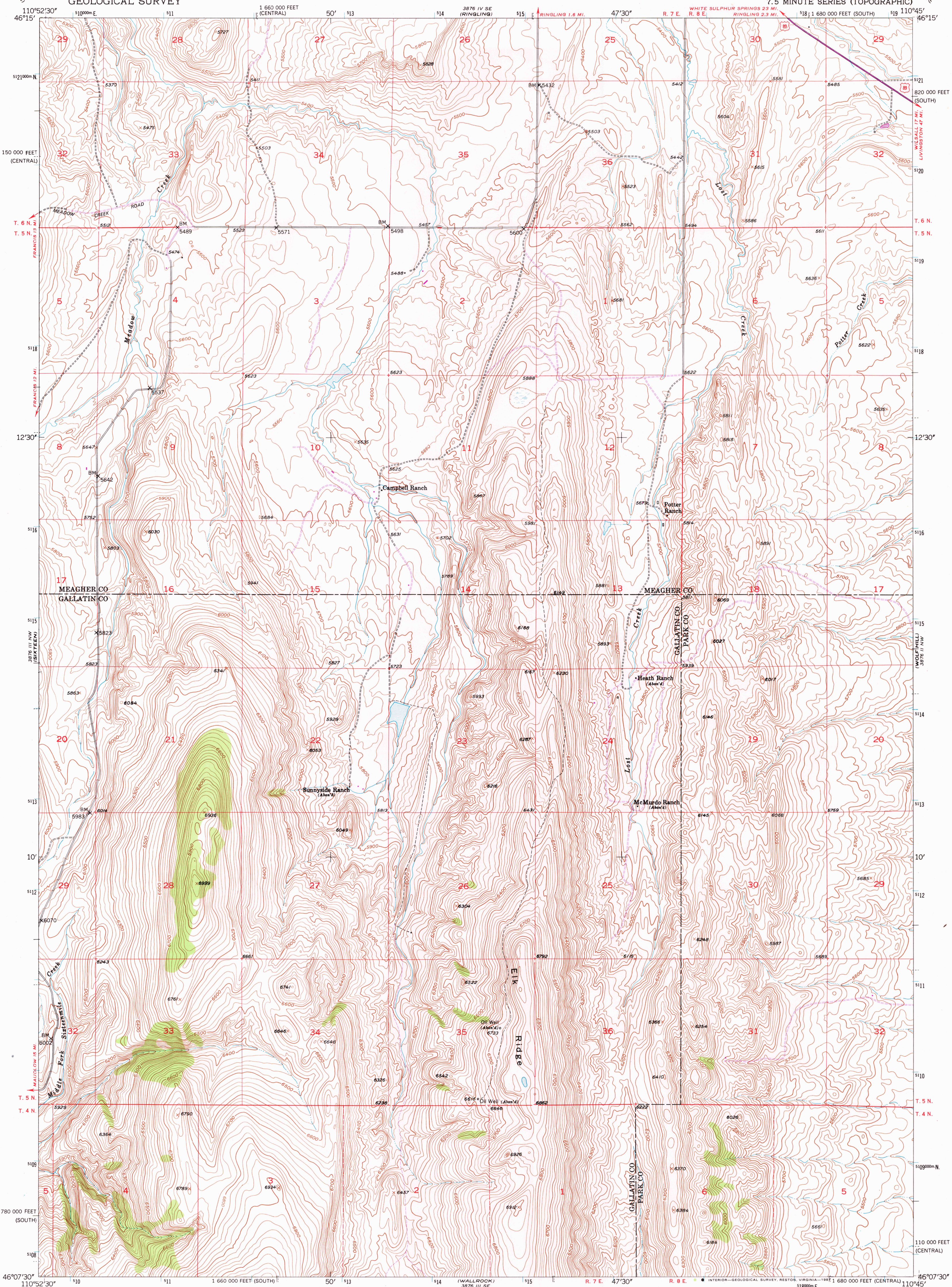
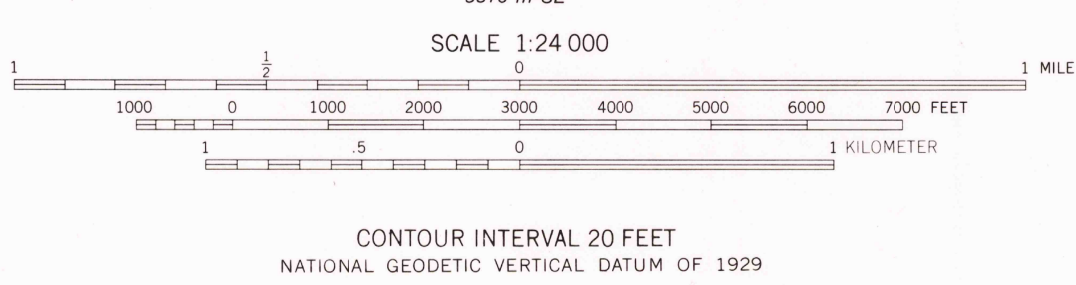
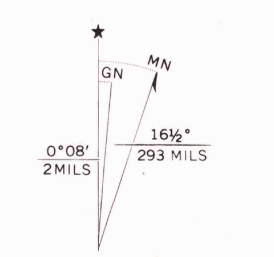


UNITED STATES  
DEPARTMENT OF THE INTERIOR  
GEOLOGICAL SURVEY

SIXTEEN NE QUADRANGLE  
MONTANA  
7.5 MINUTE SERIES (TOPOGRAPHIC)



Mapped by the Geological Survey and Bureau of Reclamation  
Field examination and publication by the Geological Survey  
as part of the Department of the Interior program for  
the development of the Missouri River Basin  
Control by USGS and NOS/NOAA  
Topography from aerial photographs by stereophotogrammetric  
methods 1947 and 1951. Aerial photographs taken 1947  
Field check 1951  
Polyconic projection. 1927 North American datum  
10,000-foot grid based on Montana coordinate system,  
central and south zones  
Dashed land lines indicate approximate locations  
1000-meter Universal Transverse Mercator grid ticks,  
zone 12, shown in blue



ROAD CLASSIFICATION

Heavy-duty	4 LANE 6 LANE	Light-duty
Medium-duty	4 LANE 6 LANE	Unimproved dirt
	U. S. Route	State Route



SIXTEEN NE, MONT.  
N4607.5-W11045/7.5  
1951  
PHOTOREVISED 1980  
DMA 3876 III NE-SERIES V894

THIS MAP COMPLIES WITH NATIONAL MAP ACCURACY STANDARDS  
FOR SALE BY U. S. GEOLOGICAL SURVEY, DENVER, COLORADO 80225, OR RESTON, VIRGINIA 22092  
A FOLDER DESCRIBING TOPOGRAPHIC MAPS AND SYMBOLS IS AVAILABLE ON REQUEST

To place on the predicted North American Datum 1983  
move the projection lines 10 meters north and  
61 meters east as shown by dashed corner ticks

RETURN TO:  
USGS NMD HISTORICAL MAP ARCHIVES