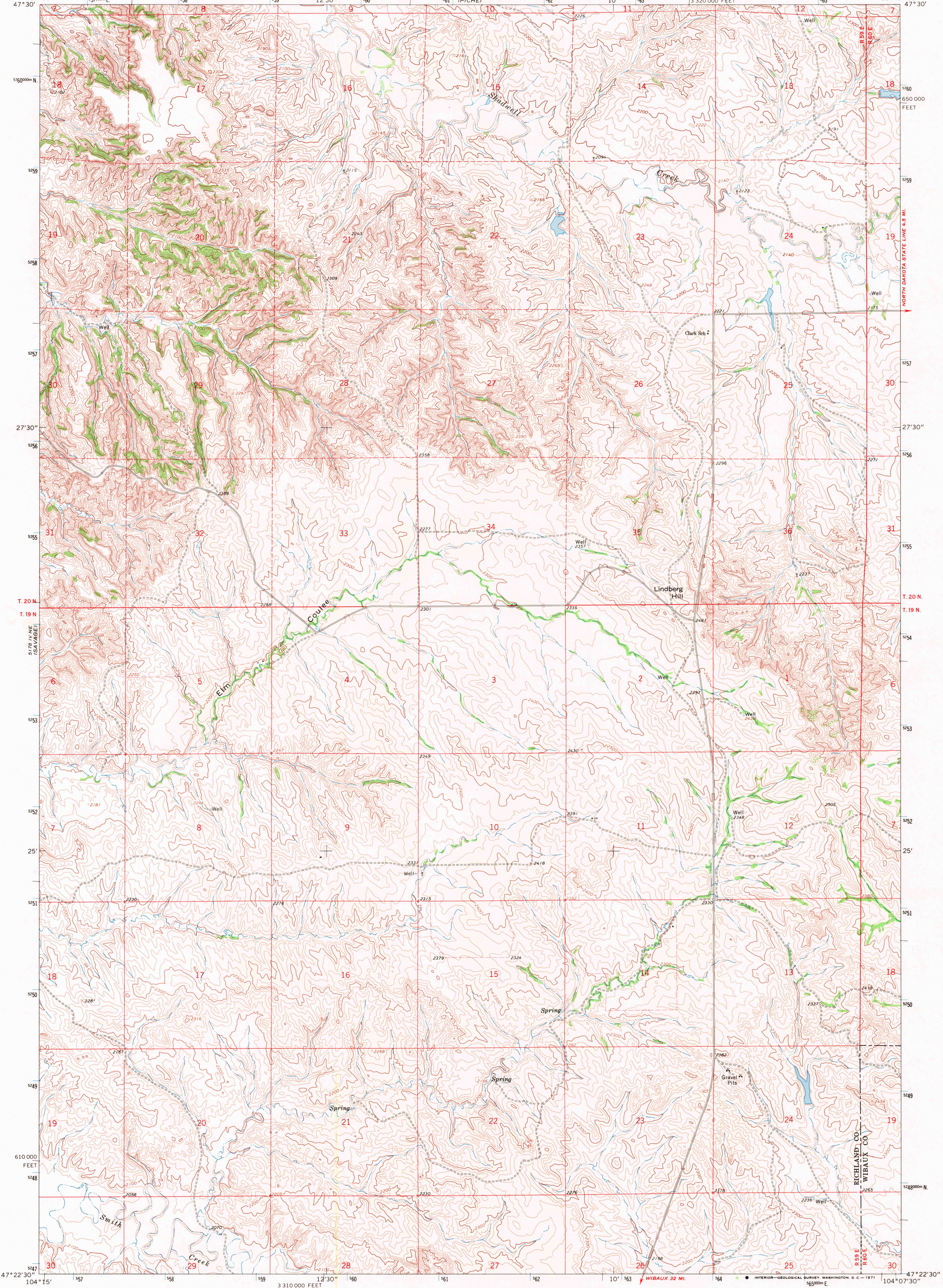
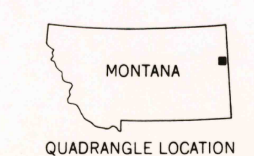
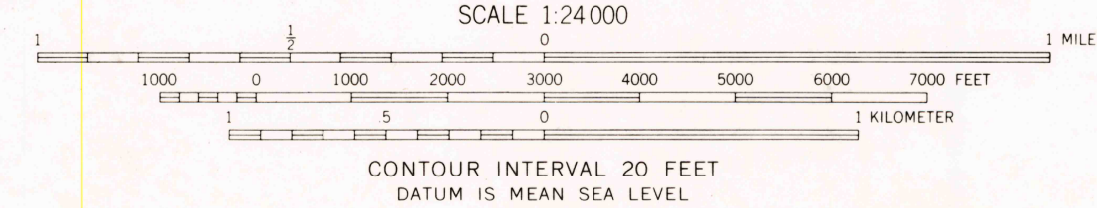
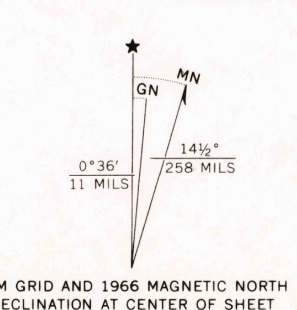


5178 I NW
SERIES
(Savage)



Mapped, edited, and published by the Geological Survey as part of the Department of the Interior program for the development of the Missouri River Basin Control by USGS and USC&GS
Topography by photogrammetric methods from aerial photographs taken 1965. Field checked 1966
Polyconic projection. 1927 North American datum. 10,000-foot grid based on Montana coordinate system, central zone
1000-meter Universal Transverse Mercator grid ticks, zone 13, shown in blue
Fine red dashed lines indicate selected fence lines



ROAD CLASSIFICATION
Light duty ————— Unimproved dirt —————

THIS MAP COMPLIES WITH NATIONAL MAP ACCURACY STANDARDS
FOR SALE BY U. S. GEOLOGICAL SURVEY, DENVER, COLORADO 80225, OR WASHINGTON, D. C. 20242
A FOLDER DESCRIBING TOPOGRAPHIC MAPS AND SYMBOLS IS AVAILABLE ON REQUEST

SKAAR NW, MONT.
N4722.5—W10407.5/7.5

1966

AMS 5178 I NW—SERIES V894

USGS
Historical File
Topographic Division

U.S.G.S.
FILES COPY
TOPOGRAPHIC DIVISION

2275

MAR 3 1977