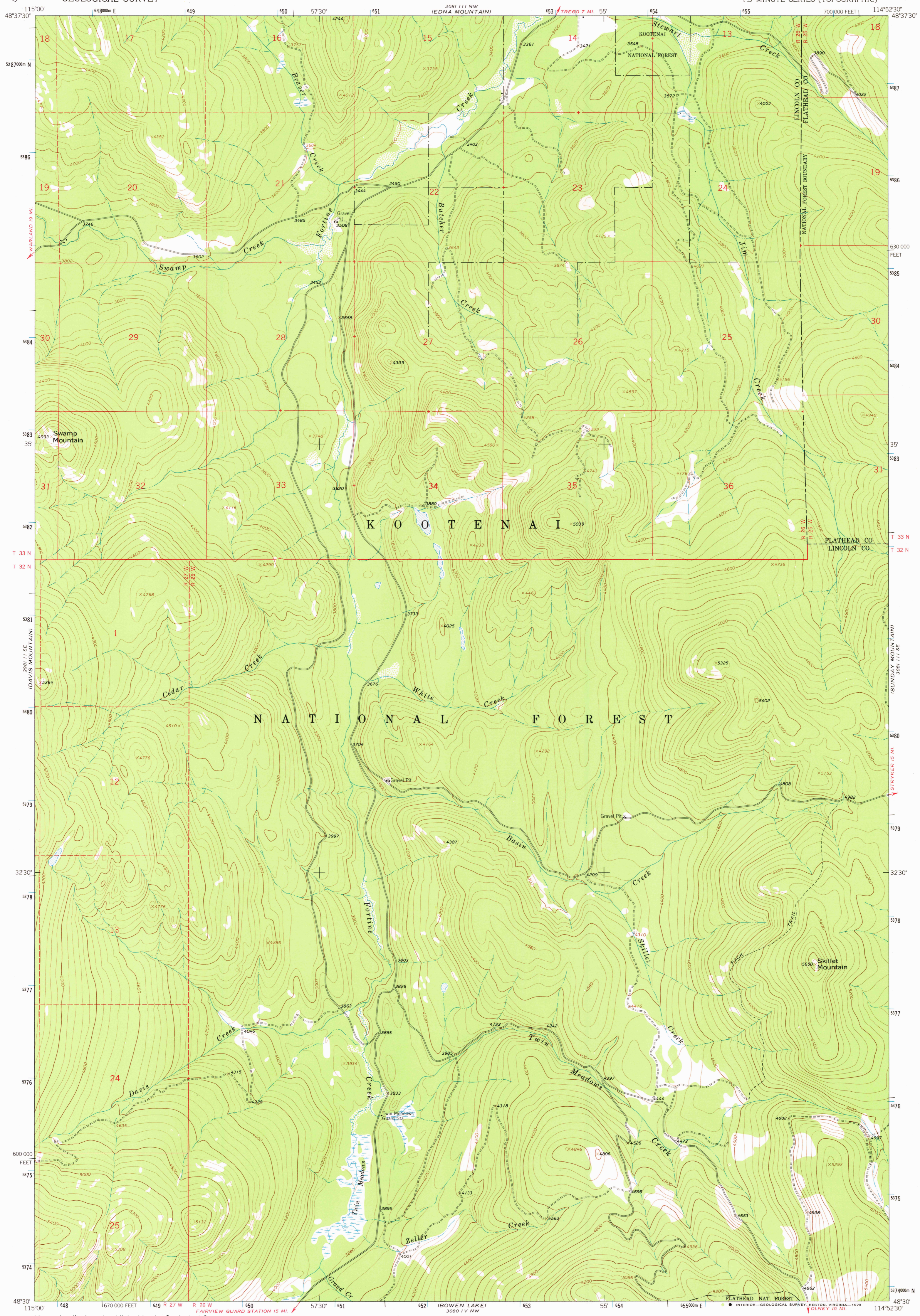


3081 11 NE
EDNA MOUNTAIN

UNITED STATES
DEPARTMENT OF THE INTERIOR
GEOLOGICAL SURVEY

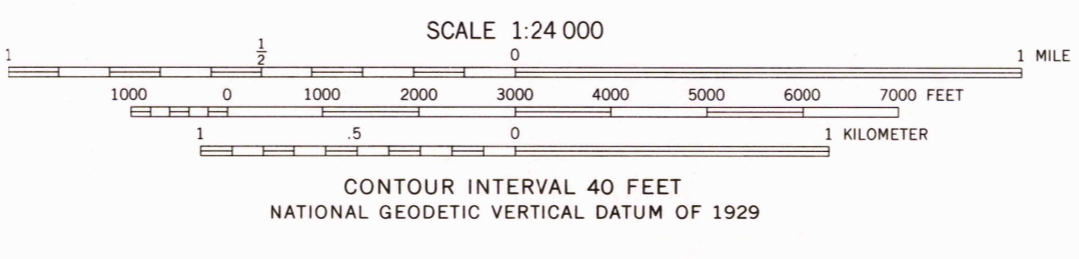
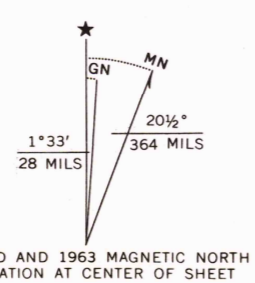
SKILLET MOUNTAIN QUADRANGLE
MONTANA
7.5 MINUTE SERIES (TOPOGRAPHIC)

3081 11 NE
STRYKER



WARLAND PEAK
2980 1 NE

Mapped, edited, and published by the Geological Survey
Control by USGS, USC&GS, and U.S. Forest Service
Topography by photogrammetric methods from aerial
photographs taken 1962. Field checked 1963
Polyconic projection: 1927 North American datum
10,000-foot grid based on Montana coordinate system, north zone
1000-meter Universal Transverse Mercator grid ticks,
zone 11, shown in blue
Where omitted, land lines have not been established



ROAD CLASSIFICATION
Light-duty ——— Unimproved dirt - - - - -

SKILLET MOUNTAIN, MONT.
N4830-W11452.5/7.5

THIS MAP COMPLIES WITH NATIONAL MAP ACCURACY STANDARDS
FOR SALE BY U.S. GEOLOGICAL SURVEY, DENVER, COLORADO 80225, OR RESTON, VIRGINIA 22092
A FOLDER DESCRIBING TOPOGRAPHIC MAPS AND SYMBOLS IS AVAILABLE ON REQUEST

USGS
Historical File
Topographic Division

1963
AMS 3081 11 SW - SERIES V894

DEC 29 1978

2300