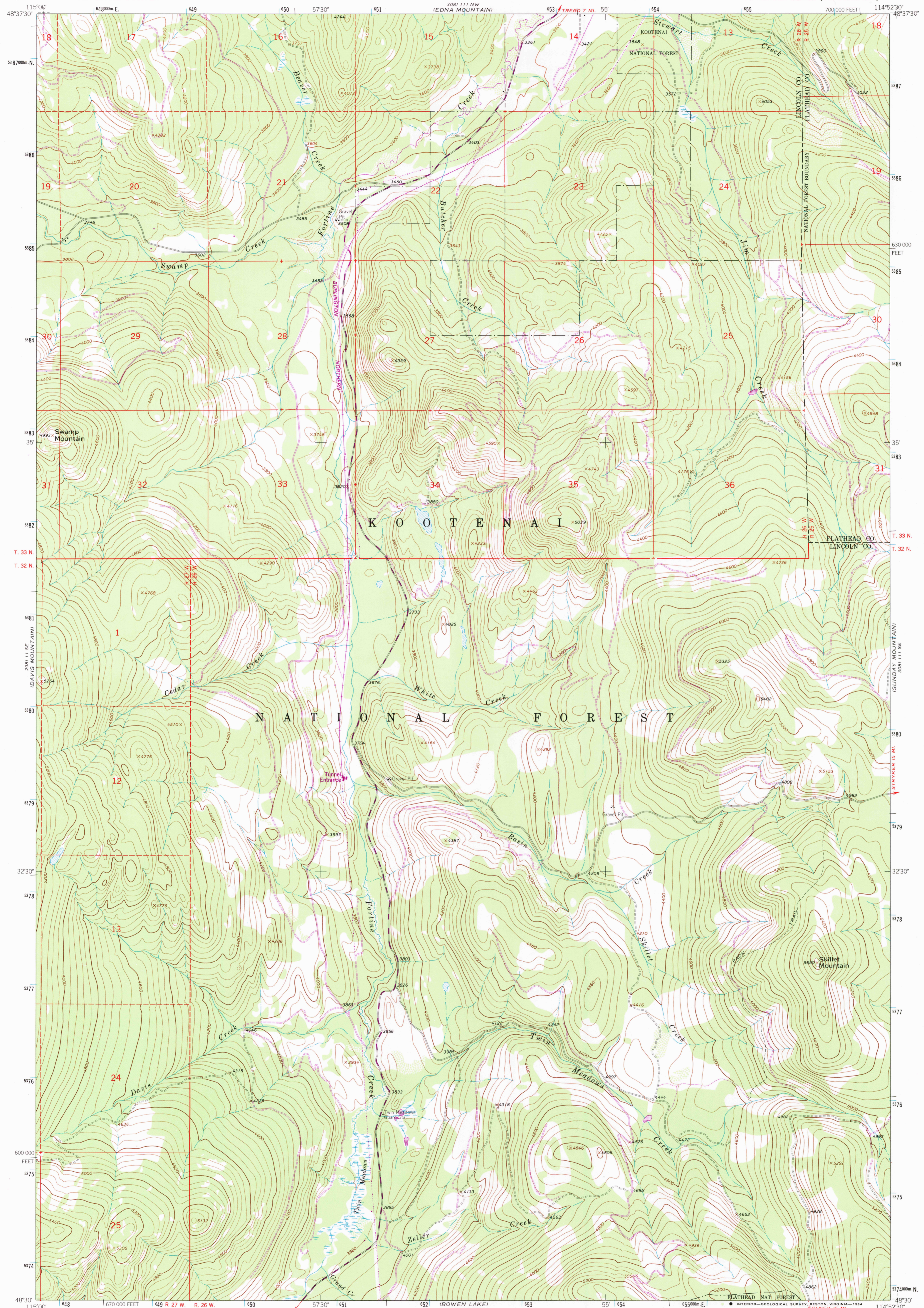


288111E  
SPINNEY MOUNTAIN

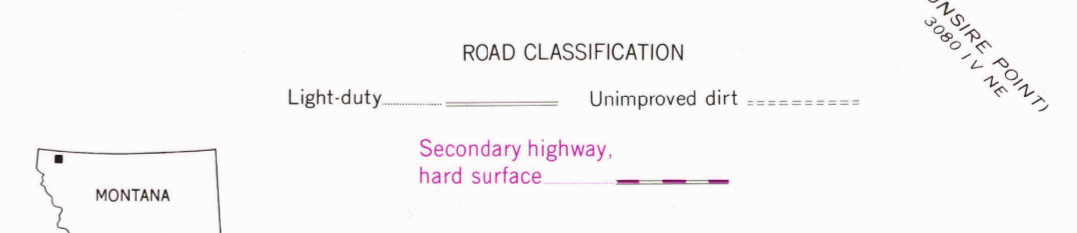
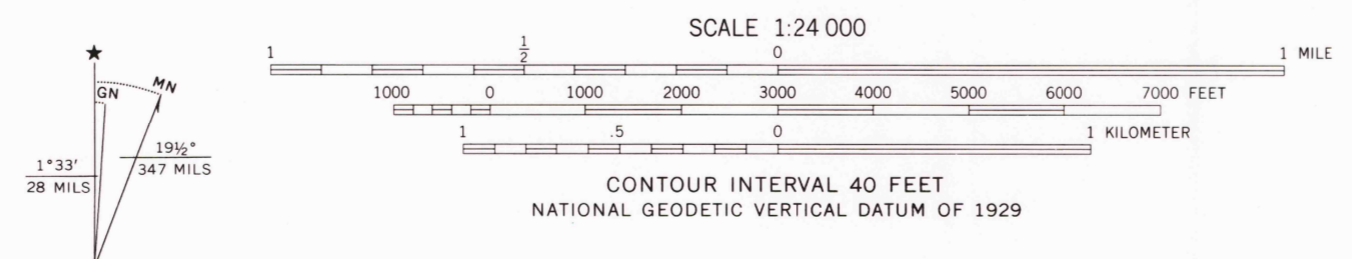
UNITED STATES  
DEPARTMENT OF THE INTERIOR  
GEOLOGICAL SURVEY

SKILLET MOUNTAIN QUADRANGLE  
MONTANA  
7.5 MINUTE SERIES (TOPOGRAPHIC)

288111E  
STRYKER



Mapped, edited, and published by the Geological Survey  
Control by USGS, NOS/NOAA, and U.S. Forest Service  
Topography by photogrammetric methods from aerial photographs taken 1962. Field checked 1963  
Polyconic projection. 1927 North American Datum  
10,000-foot grid based on Montana coordinate system, north zone  
1000-meter Universal Transverse Mercator grid ticks, zone 11, shown in blue  
Where omitted, land lines have not been established  
There may be private inholdings within the boundaries of the National or State reservations shown on this map  
To place on the predicted North American Datum 1983 move the projection lines 12 meters north and 73 meters east as shown by dashed corner ticks



THIS MAP COMPLIES WITH NATIONAL MAP ACCURACY STANDARDS  
FOR SALE BY U.S. GEOLOGICAL SURVEY, DENVER, COLORADO 80225, OR RESTON, VIRGINIA 22092  
A FOLDER DESCRIBING TOPOGRAPHIC MAPS AND SYMBOLS IS AVAILABLE ON REQUEST

SKILLET MOUNTAIN, MONT.  
48114-EB-TF-024  
1963  
PHOTOREVISED 1983  
DMA 3081 III SW - SERIES V894

RETURN TO:  
USGS NMD HISTORICAL MAP ARCHIVES

FEB 22 1984