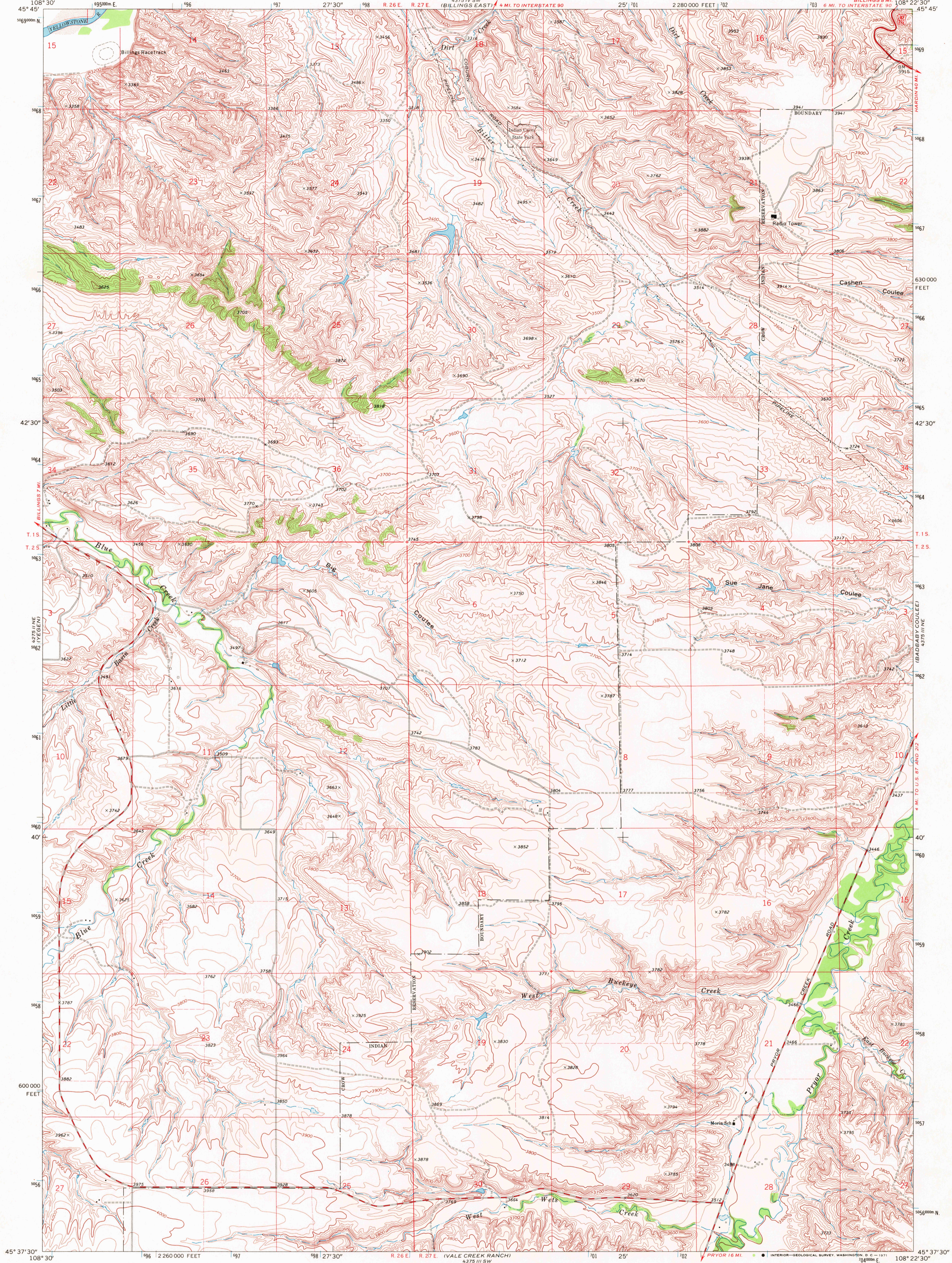


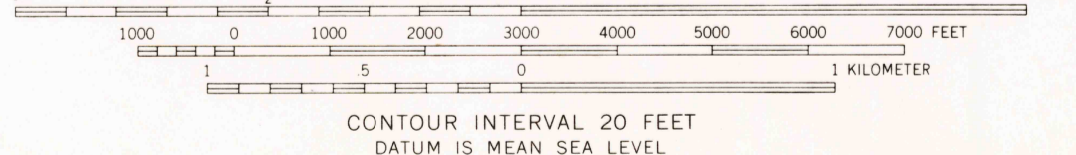
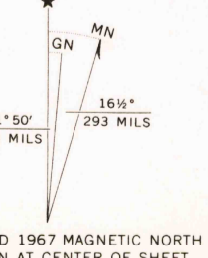
UNITED STATES  
DEPARTMENT OF THE INTERIOR  
GEOLOGICAL SURVEY

SODA SPRINGS NW QUADRANGLE  
MONTANA—YELLOWSTONE CO.  
7.5 MINUTE SERIES (TOPOGRAPHIC)



Mapped, edited, and published by the Geological Survey

Control by USGS and USC&GS  
Topography by photogrammetric methods from aerial photographs taken 1966. Field checked 1967  
Polyconic projection. 1927 North American datum 10,000-foot grid based on Montana coordinate system, south zone  
1000-meter Universal Transverse Mercator grid ticks, zone 12, shown in blue  
Fine red dashed lines indicate selected fence lines



ROAD CLASSIFICATION

|             |                 |
|-------------|-----------------|
| Heavy-duty  | Light-duty      |
| Medium-duty | Unimproved dirt |
| U.S. Route  |                 |

THIS MAP COMPLIES WITH NATIONAL MAP ACCURACY STANDARDS  
FOR SALE BY U.S. GEOLOGICAL SURVEY, DENVER, COLORADO 80225, OR WASHINGTON, D.C. 20242  
A FOLDER DESCRIBING TOPOGRAPHIC MAPS AND SYMBOLS IS AVAILABLE ON REQUEST

SODA SPRINGS NW, MONT.  
N4537.5—W10822.5/7.5

1967  
AMS 4375 III NW—SERIES V894

1975  
DEC 21 1971  
USGS  
HISTORICAL FILE  
TOPOGRAPHIC DIVISION