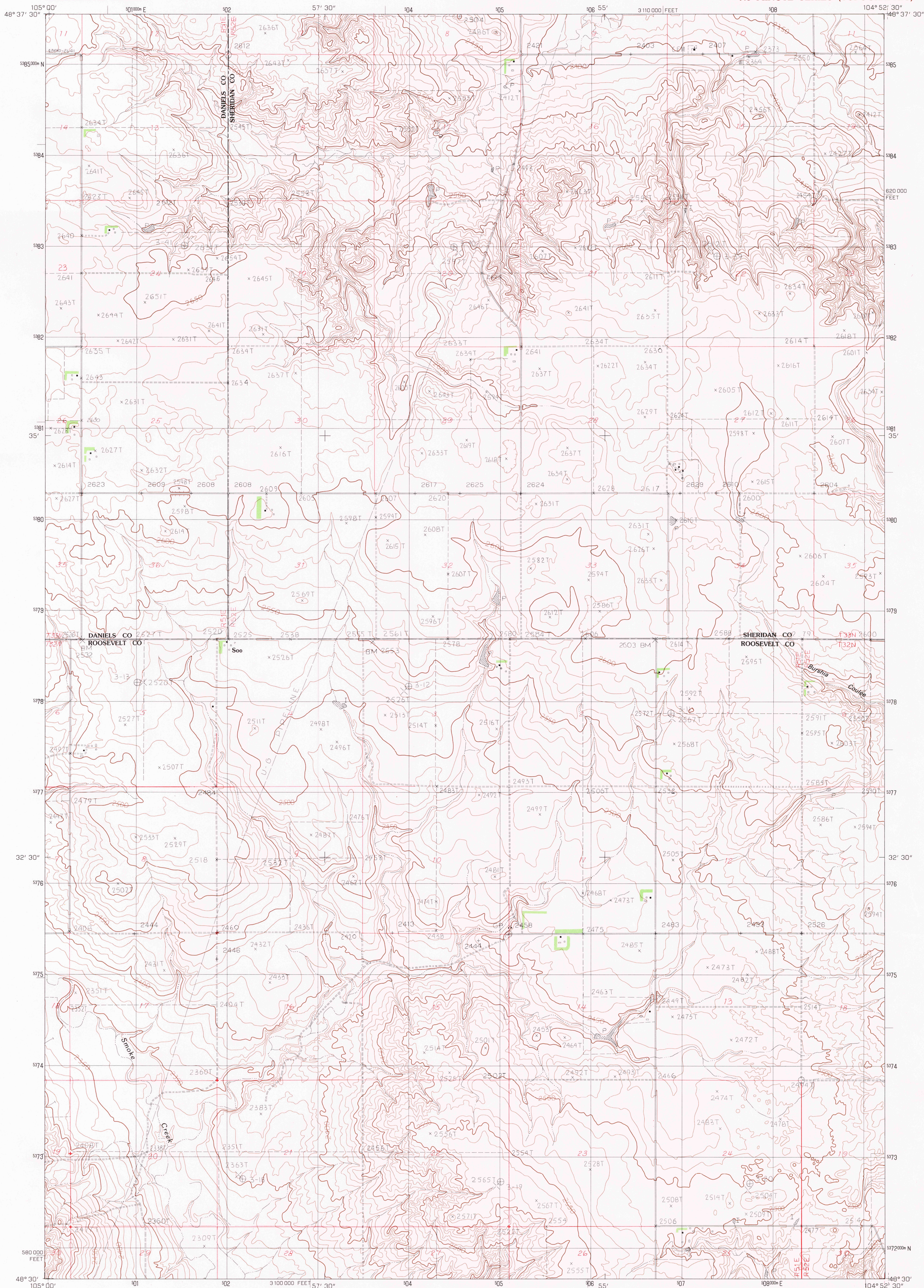


UNITED STATES  
DEPARTMENT OF THE INTERIOR  
GEOLOGICAL SURVEY

SOO QUADRANGLE  
MONTANA  
7.5 MINUTE SERIES (TOPOGRAPHIC)



PRODUCED BY THE UNITED STATES GEOLOGICAL SURVEY  
CONTROL BY USGS, NOS/NOAA  
COMPILED FROM AERIAL PHOTOGRAPHS TAKEN 1974  
FIELD CHECKED 1977 MAP EDITED 1983  
PROJECTION LAMBERT CONFORMAL CONIC  
GRID 1000-METER UNIVERSAL TRANSVERSE MERCATOR ZONE 13  
10,000-FOOT STATE GRID TICS MONTANA, NORTH ZONE  
UTM GRID DECLINATION 0°03' EAST  
1983 MAGNETIC NORTH DECLINATION 14° EAST  
VERTICAL DATUM NATIONAL GEODETIC VERTICAL DATUM OF 1989  
HORIZONTAL DATUM 1927 NORTH AMERICAN DATUM  
To place on the predicted North American Datum of 1983, move  
the projection lines as shown by dashed corner ticks  
(2 meters north and 40 meters east)  
There may be private inholdings within the boundaries of any  
Federal and State Reservations shown on this map.  
Entire area lies within the boundary of the Fort Peck  
Indian Reservation

**PROVISIONAL MAP**  
Produced from original  
manuscript drawings. Infor-  
mation shown as of date of  
field check.

THIS MAP COMPLIES WITH NATIONAL MAP ACCURACY STANDARDS  
FOR SALE BY U.S. GEOLOGICAL SURVEY, DENVER, COLORADO 80225  
OR RESTON, VIRGINIA 22092

TO convert meters to feet multiply by 3.2808  
To convert feet to meters multiply by .3048

SCALE 1:24 000  
KILOMETERS 1 2  
METERS 1000 2000  
MILES 1 2  
FEET 1000 2000 3000 4000 5000 6000 7000 8000 9000 10 000

CONTOUR INTERVAL 10 FEET



QUADRANGLE LOCATION

**ROAD LEGEND**  
Improved Road .....  
Unimproved Road .....  
Trail .....  
Interstate Route U.S. Route State Route

1	2	3	1 Pleasant Prairie NE
4	5	6	2 Soo NW
7	8	9	3 Soo NE
			4 Pleasant Prairie
			5 Thornwood Ranch
			6 Hay Creek
			7 Beam School
			8 Snake Creek NE

ADJOINING 7.5 QUADRANGLE NAMES

SOO, MONTANA  
PROVISIONAL EDITION 1983

48104-E8-TF-024

RETURN TO:  
USGS NMD HISTORICAL MAP ARCHIVES

MAY 1 1983