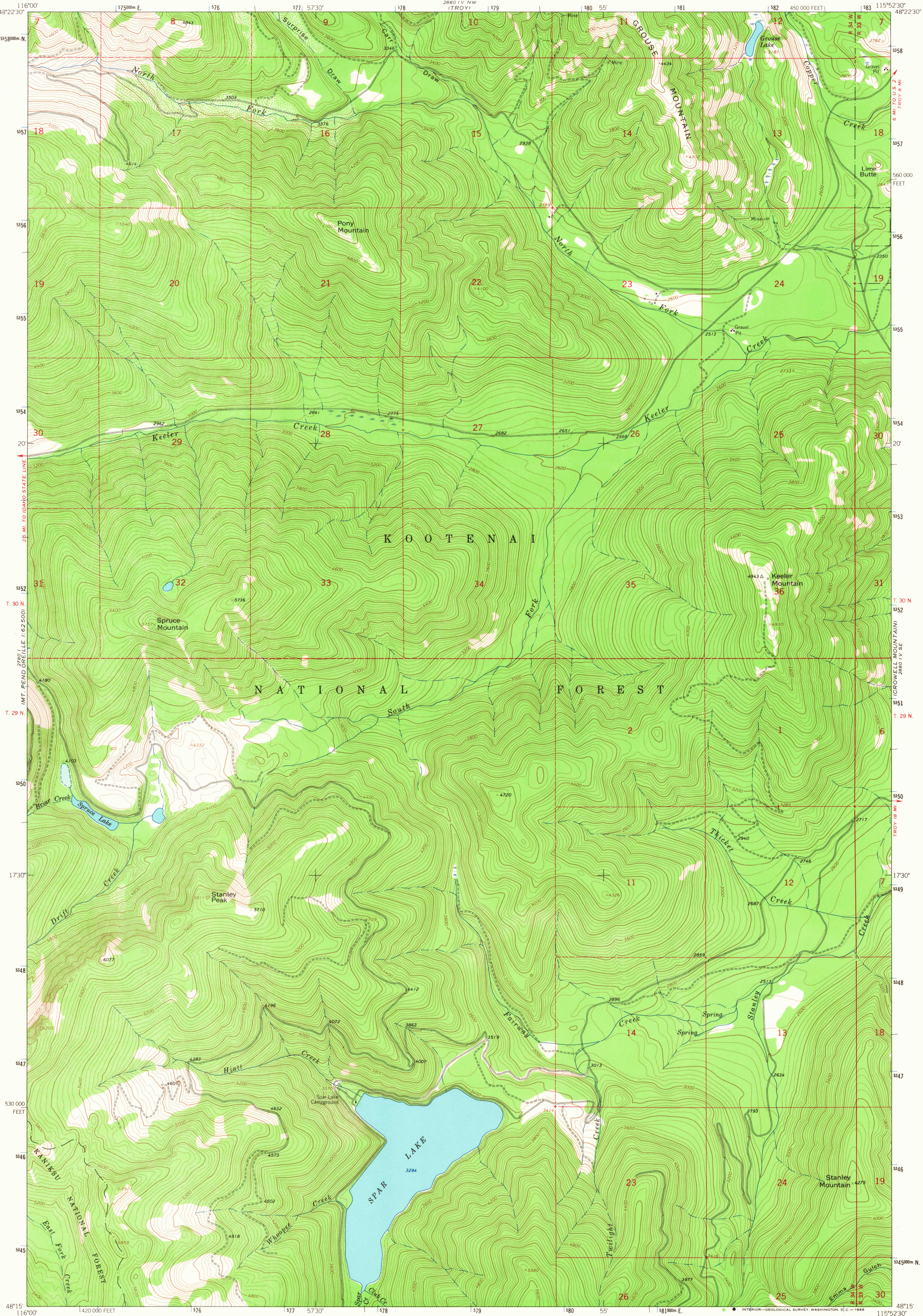
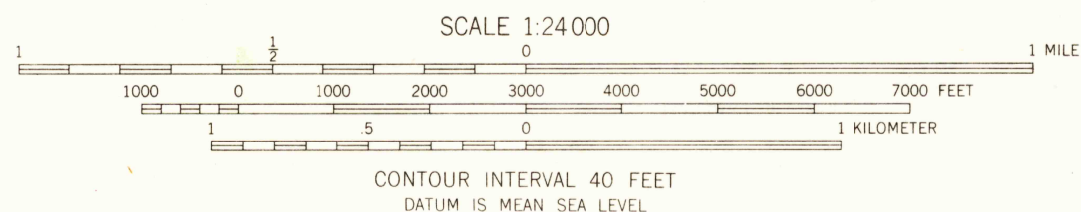
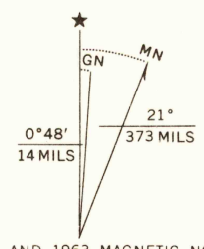


UNITED STATES
DEPARTMENT OF THE INTERIOR
GEOLOGICAL SURVEY

SPAR LAKE QUADRANGLE
MONTANA-LINCOLN CO.
7.5 MINUTE SERIES (TOPOGRAPHIC)



Mapped, edited, and published by the Geological Survey
Control by USGS and USC&GS
Topography by photogrammetric methods from aerial
photographs taken 1962 and 1963. Field checked 1963
Polyconic projection. 1927 North American datum
10,000-foot grid based on Montana coordinate system, north zone
1000-meter Universal Transverse Mercator grid ticks,
zone 11, shown in blue
Where omitted, land lines have not been established



ROAD CLASSIFICATION
Light-duty ————— Unimproved dirt —————

SPAR LAKE, MONT.
N4815-W11552.5/7.5

1963

AMS 2880 IV SW-SERIES V894

U.S.G.S.
FILE COPY
TOPOGRAPHIC DIVISION

USGS
Historical File
Topographic Division