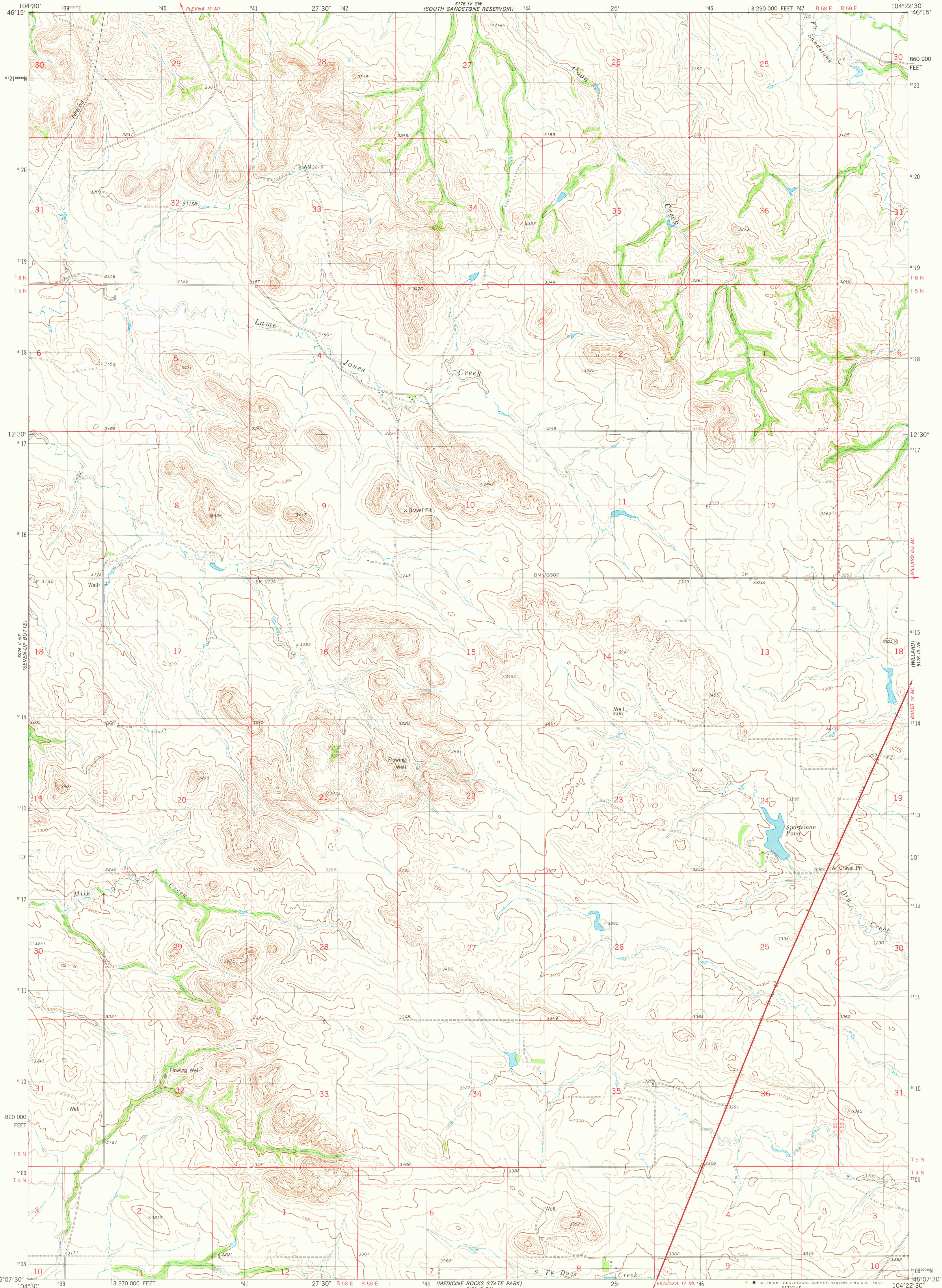


UNITED STATES  
DEPARTMENT OF THE INTERIOR  
GEOLOGICAL SURVEY

SPORTSMAN POND QUADRANGLE  
MONTANA—FALLON CO.  
7.5 MINUTE SERIES (TOPOGRAPHIC)



Mapped, edited, and published by the Geological Survey

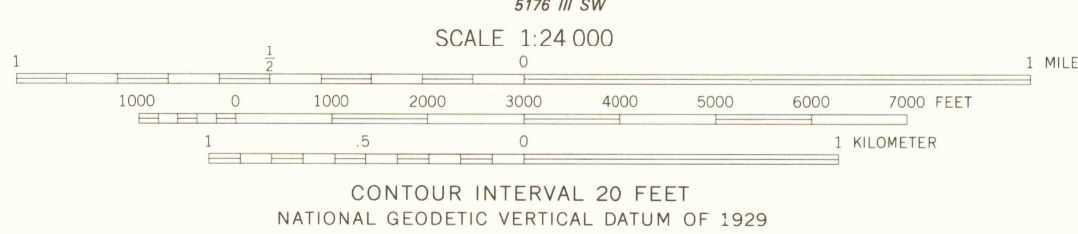
Control by USGS and NOS/NOAA

Topography by photogrammetric methods from aerial photographs taken 1974. Field checked 1976. Map edited 1981

Projection and 10,000-foot grid ticks: Montana coordinate system, south zone (Lambert conformal conic) 1000-meter Universal Transverse Mercator grid, zone 13 1927 North American datum

To place on the predicted North American Datum 1983 move the projection lines 4 meters north and 40 meters east as shown by dashed corner ticks

Fine red dashed lines indicate selected fence lines



ROAD CLASSIFICATION	
Primary highway, hard surface	Light-duty road, hard or improved surface
Secondary highway, hard surface	Unimproved road
Interstate Route	U. S. Route
	State Route



SPORTSMAN POND, MONT.  
N4607.5-W10422.5/7.5

1981

DMA 5176 III NW—SERIES Y894

RETURN TO:  
USGS NMD HISTORICAL MAP ARCHIVES