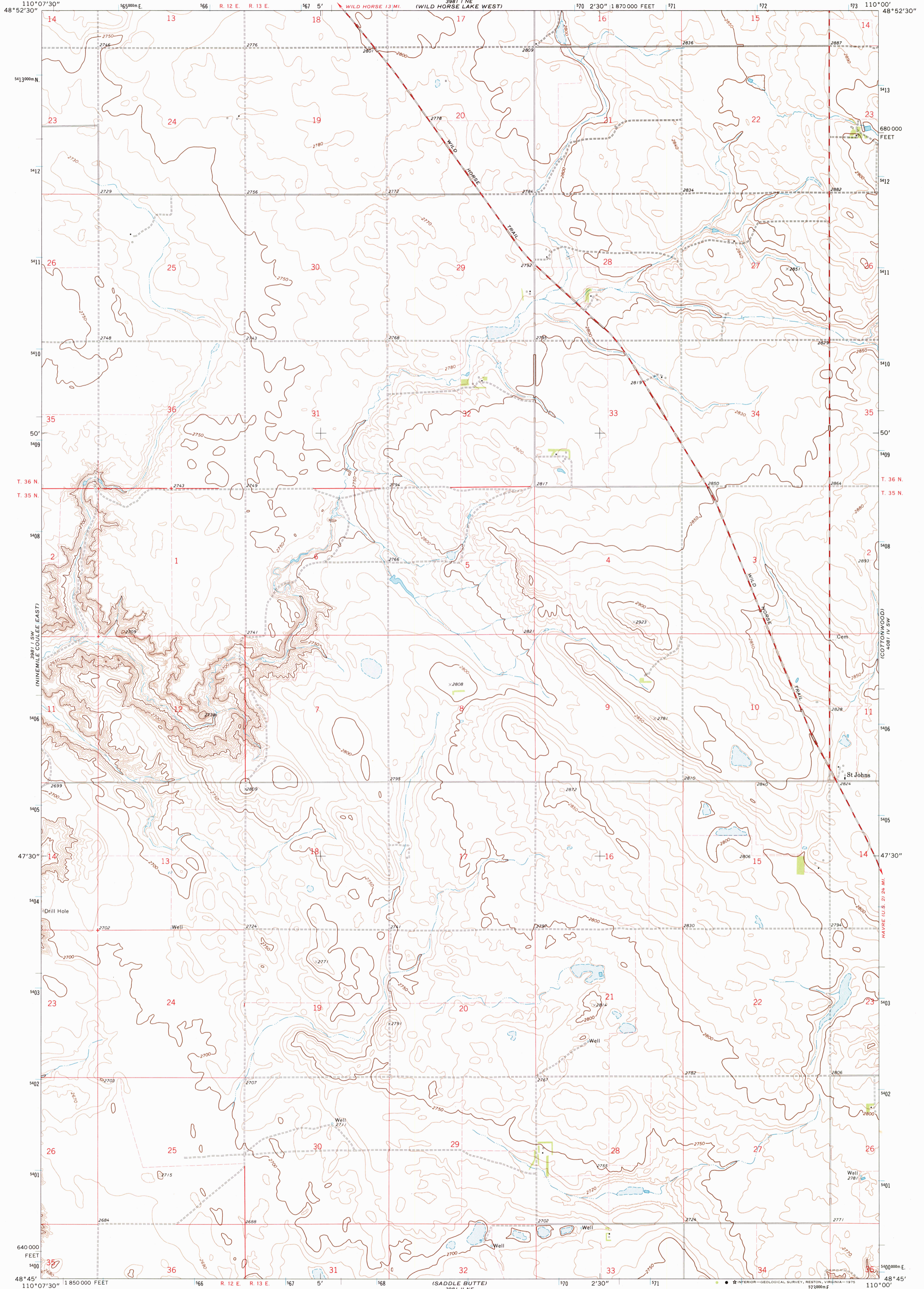


UNITED STATES  
DEPARTMENT OF THE INTERIOR  
GEOLOGICAL SURVEY

ST. JOHNS QUADRANGLE  
MONTANA—HILL CO.  
7.5 MINUTE SERIES (TOPOGRAPHIC)



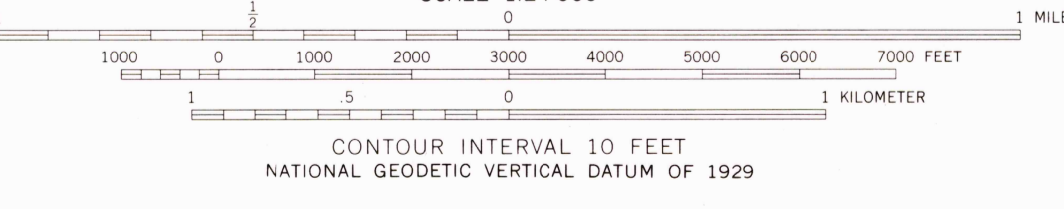
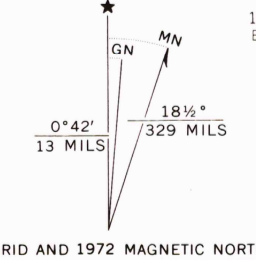
3981 I NW  
(WILD HORSE LAKE)

3981 IV NW  
(WILD HORSE LAKE)

3981 I SW  
(DRY LAKE)

3981 IV SW  
(COTTONWOOD)

Mapped, edited, and published by the Geological Survey  
Control by USGS and USC&GS  
Topography by photogrammetric methods from aerial photographs taken 1970. Field checked 1972  
Projection and 10,000-foot grid ticks: Montana coordinate system, north zone (Lambert conformal conic)  
1000-meter Universal Transverse Mercator grid ticks, zone 12, shown in blue. 1927 North American datum  
Fine red dashed lines indicate selected fence lines



ROAD CLASSIFICATION

Primary highway, hard surface	Light-duty road, hard or improved surface
Secondary highway, hard surface	Unimproved road
Interstate Route	U. S. Route
	State Route



ST. JOHNS, MONT.  
N4845—W11000/7.5

1972

USGS  
HISTORICAL FILE  
TOPOGRAPHIC DIVISION

AMS 3981 I SE—SERIES V894

THIS MAP COMPLIES WITH NATIONAL MAP ACCURACY STANDARDS  
FOR SALE BY U.S. GEOLOGICAL SURVEY, DENVER, COLORADO 80225, OR RESTON, VIRGINIA 22092  
A FOLDER DESCRIBING TOPOGRAPHIC MAPS AND SYMBOLS IS AVAILABLE ON REQUEST

2250 JUL 10 1975