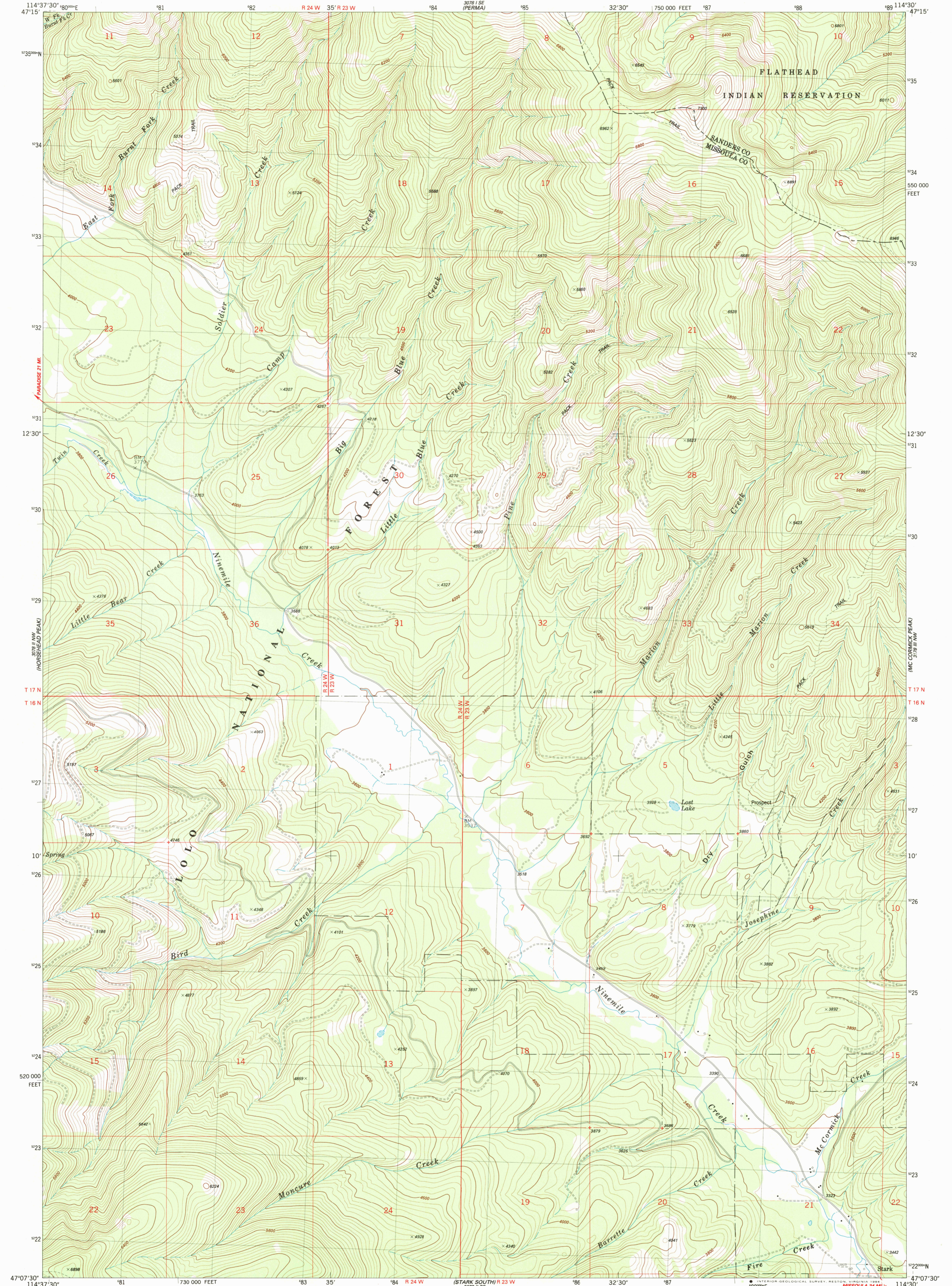


3078 11 NE-SERIES V894

UNITED STATES
DEPARTMENT OF THE INTERIOR
GEOLOGICAL SURVEY

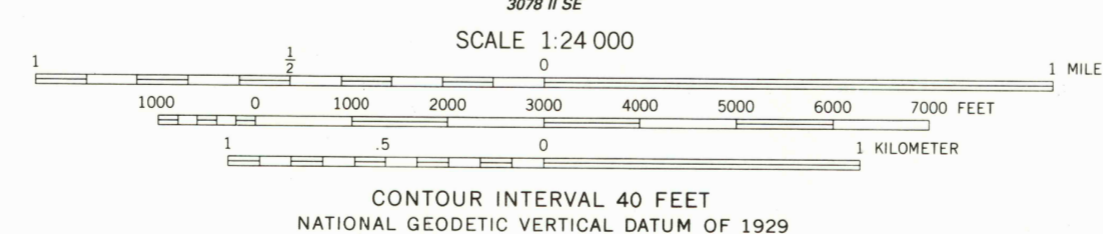
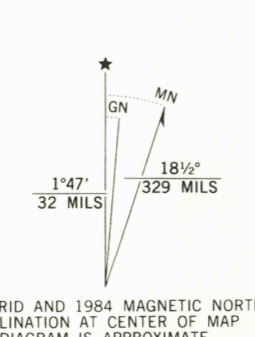
STARK NORTH QUADRANGLE
MONTANA
7.5 MINUTE SERIES (TOPOGRAPHIC)
NE/4 TARKIO 15' QUADRANGLE

3178 11 NW
(MC DONALD)



3078 11 NW
(HORSEHEAD PEAK)

Mapped, edited, and published by the Geological Survey
Control by USGS, NOS/NOAA, and USFS
Topography by photogrammetric methods from aerial photographs
taken 1977. Field checked 1980. Map edited 1984
Projection and 10,000-foot grid ticks. Montana
coordinate system, central zone (Lambert conformal conic)
1000-meter Universal Transverse Mercator grid, zone 11
1927 North American Datum
To place on the predicted North American Datum 1983
move the projection lines 12 meters north and
72 meters east as shown by dashed corner ticks
Fine red dashed lines indicate selected fence lines
There may be private inholdings within the boundaries of
the National or State reservations shown on this map



ROAD CLASSIFICATION

Primary highway, hard surface	Light-duty road, hard or improved surface
Secondary highway, hard surface	Unimproved road
Interstate Route	U.S. Route
	State Route

STARK NORTH, MONT.
NE/4 TARKIO 15' QUADRANGLE
47114-B5-TF-024

1984

DMA 3078 11 NE-SERIES V894

3178 11 NW
(MC CORMICK PEAK)

RETURN TO:
USGS NHD HISTORICAL MAP ARCHIVES