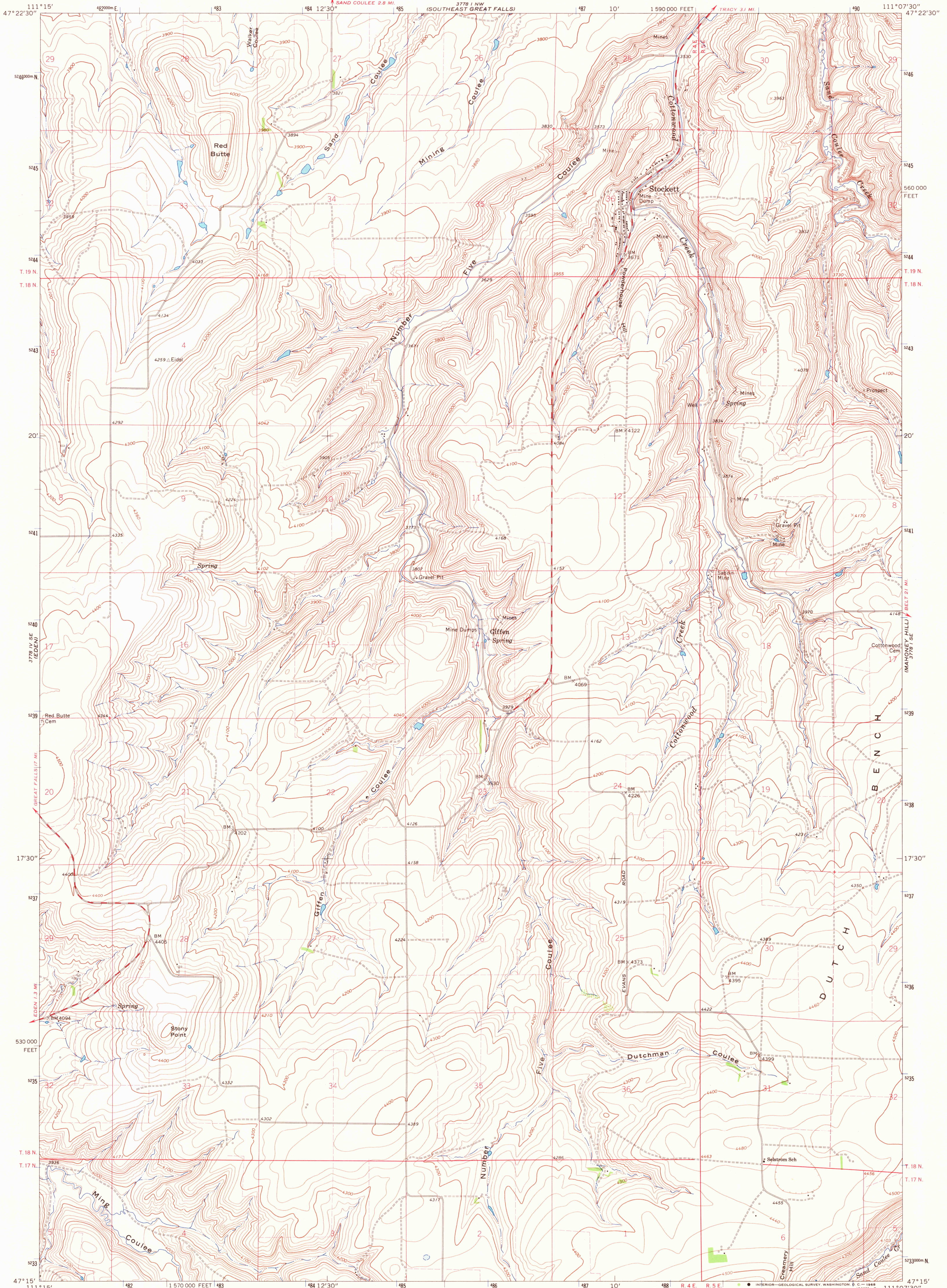


378 1/4 NW
SOUTHWEST
GREAT FALLS

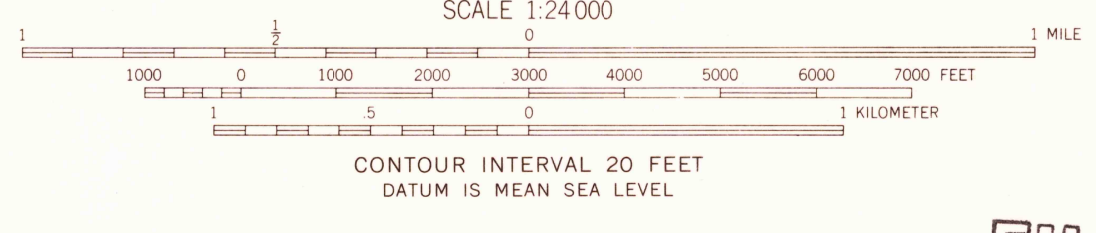
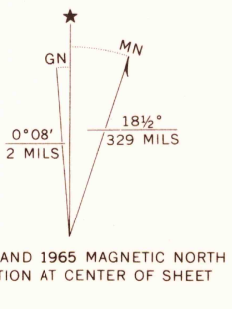
UNITED STATES
DEPARTMENT OF THE INTERIOR
GEOLOGICAL SURVEY

STOCKETT QUADRANGLE
MONTANA—CASCADE CO.
7.5 MINUTE SERIES (TOPOGRAPHIC)
SW/4 STOCKETT 15' QUADRANGLE

378 1/4 NE
(R.F.E.)



Mapped, edited, and published by the Geological Survey
Control by USGS and USC&GS
Topography by photogrammetric methods from aerial
photographs taken 1964. Field checked 1965
Polyconic projection. 1927 North American datum
10,000-foot grid based on Montana coordinate system,
central zone
1000-meter Universal Transverse Mercator grid ticks,
zone 12, shown in blue
Fine red dashed lines indicate selected fence lines



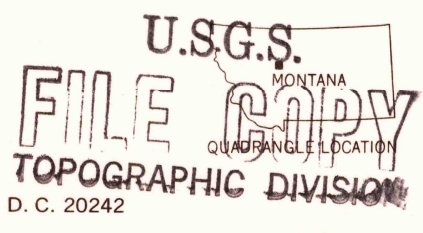
SCALE 1:24,000
CONTOUR INTERVAL 20 FEET
DATUM IS MEAN SEA LEVEL

ROAD CLASSIFICATION
Medium-duty ——— Light-duty ———
Unimproved dirt =-----

USGS
Historical File
Topographic Division

2585
APR 26 1968

THIS MAP COMPLIES WITH NATIONAL MAP ACCURACY STANDARDS
FOR SALE BY U.S. GEOLOGICAL SURVEY, DENVER, COLORADO 80225, OR WASHINGTON, D. C. 20242
A FOLDER DESCRIBING TOPOGRAPHIC MAPS AND SYMBOLS IS AVAILABLE ON REQUEST



STOCKETT, MONT.
SW/4 STOCKETT 15' QUADRANGLE
N4715—W11107.5/7.5

1965
AMS 3778 1 SW—SERIES V894